



FLEXIAGENT

Market Leading, Independent Estate Agents



Liverpool Road Southport, PR8 4NT £170,000

Flexi-Agent is thrilled to present this three-bedroom apartment to the open sales market. Ideally located near Birkdale Village, which offers a wide variety of local bars, eateries, shops, and amenities, this property presents an excellent opportunity. Communal hallways and stairs provide access to all three apartments in the building.

The apartment briefly comprises a private hallway, an open-plan kitchen/diner/lounge with a lovely bay window, and three well-proportioned bedrooms. One of the bedrooms features an en-suite WC/shower room, while another benefits from a wardrobe/storage room. A charming four-piece bathroom completes this apartment.

Externally there is off road parking to the front of the property.

Viewings available upon request.

EPC B
Council tax band B
Leasehold details TBC
NO CHAIN

Mobile coverage
EE

Viewing

Please contact our Flexi Agent Southport Office on 01704 889455 if you wish to arrange a viewing appointment for this property or require further information.

- Three bedroom
- First floor apartment
- Circa 1025 sqft
- GREAT LOCATION
- Double bedrooms
- Open plan kitchen/diner/lounge
- WC/Shower Room
- Modern four piece bathroom
- Off road parking to the front
- Viewings available upon request



3



2



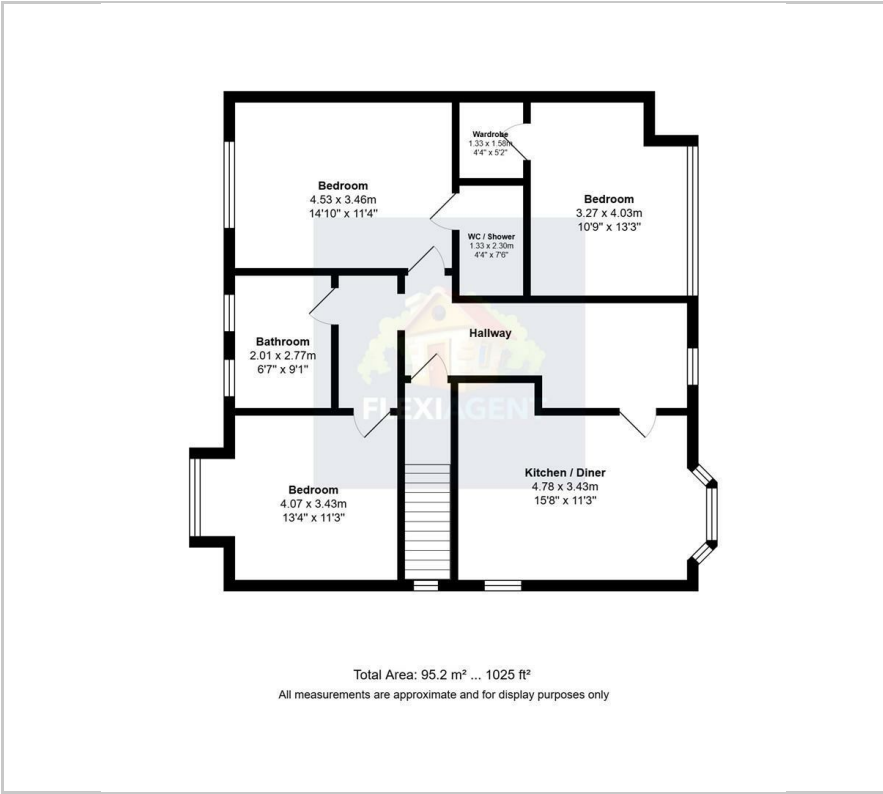
1



B



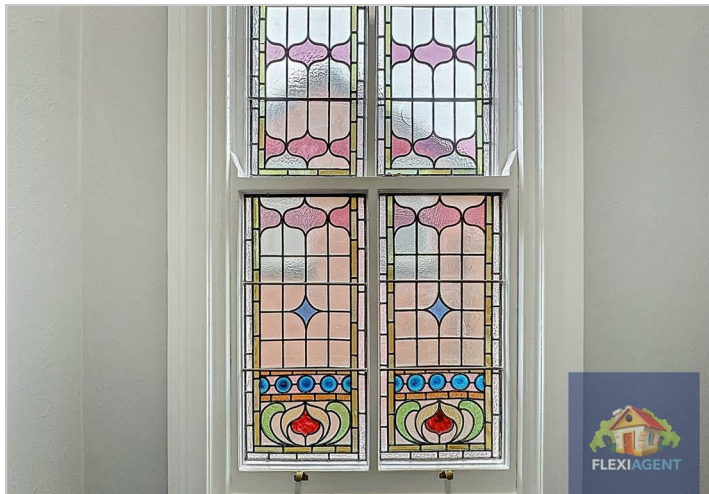
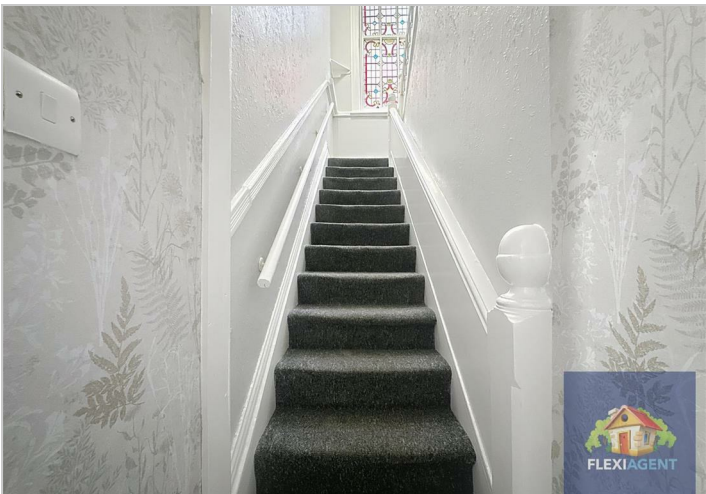
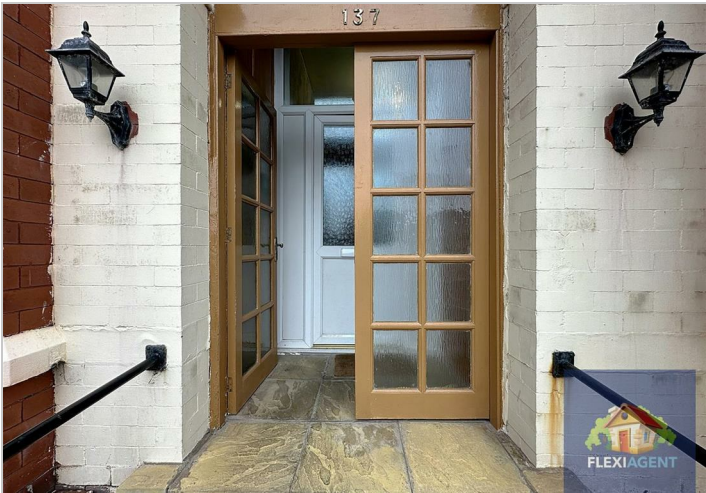
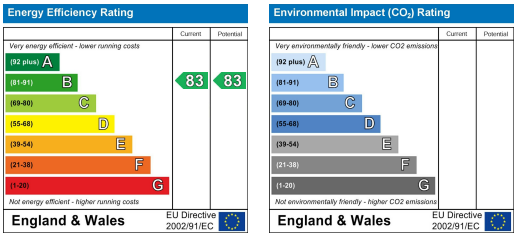
Floor Plan



Area Map



Energy Efficiency Graph



These particulars, whilst believed to be accurate are set out as a general outline only for guidance and do not constitute any part of an offer or contract. Intending purchasers should not rely on them as statements of representation of fact, but must satisfy themselves by inspection or otherwise as to their accuracy. No person in this firms employment has the authority to make or give any representation or warranty in respect of the property.