



FLEXIAGENT

Market Leading, Independent Estate Agents



Lydford Close

Southport, PR9 8SU

Offers In Excess Of £200,000

Flexi-Agent is delighted to present this two-double-bedroom mid-terrace property to the open sales market. Ideally located close to local amenities, Botanic Gardens, Churchtown village, and the A565, it offers easy access to public transport links into Southport town centre.

The property briefly comprises a welcoming front entrance porch, a convenient downstairs WC, a front-facing lounge, and a rear kitchen diner featuring a recently upgraded kitchen and flooring, along with double doors leading to the private garden.

On the first floor, you'll find two double bedrooms and a lovely three-piece family bathroom.

Externally, the property offers off-road parking to the front, and to the rear, a private garden that benefits from plenty of sunshine.

Viewings are available upon request.

Freehold
Council tax band TBC
EPC B

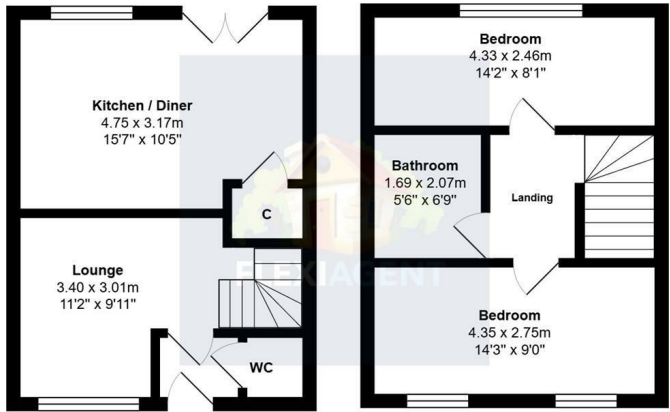
Viewing

Please contact our Flexi Agent Southport Office on 01704 889455 if you wish to arrange a viewing appointment for this property or require further information.

- Two double bedrooms
- Mid terrace, circa 700 sqft
- Upgraded kitchen & flooring
- Nicely presented front lounge
- Modern kitchen diner
- Lovely three piece bathroom & WC
- Front drive parking
- Rear sun catching garden
- Viewings available upon request



Floor Plan

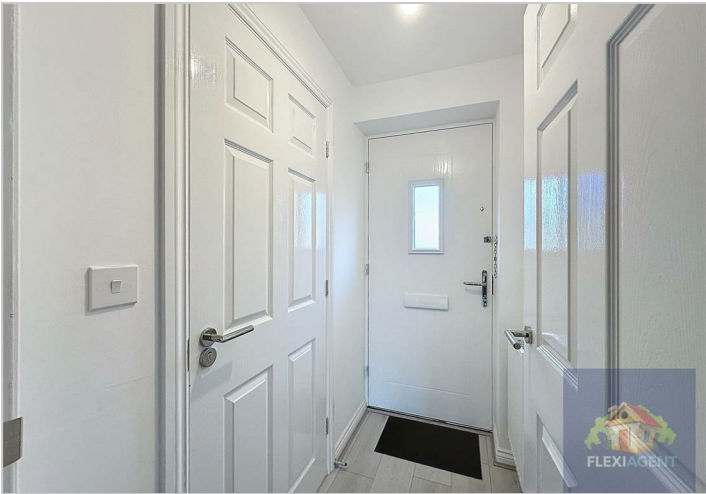
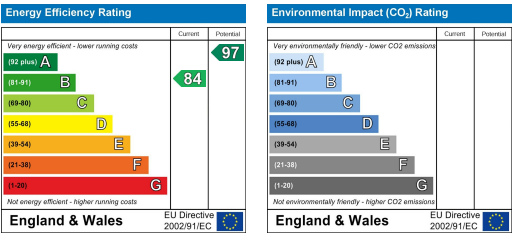


Total Area: 65.0 m² ... 700 ft²
All measurements are approximate and for display purposes only

Area Map



Energy Efficiency Graph



These particulars, whilst believed to be accurate are set out as a general outline only for guidance and do not constitute any part of an offer or contract. Intending purchasers should not rely on them as statements of representation of fact, but must satisfy themselves by inspection or otherwise as to their accuracy. No person in this firms employment has the authority to make or give any representation or warranty in respect of the property.