



FLEXIAGENT

Market Leading, Independent Estate Agents



Osborne Road Southport, PR8 2RJ

£650,000

Flexi-Agent are delighted to present this stunning five DOUBLE bedroom detached property to the open market. Located in central Ainsdale, it is surrounded by a wealth of local amenities, has easy access to local transport links leading to Southport & Liverpool, as well as a plethora of restaurants, boutiques, bars & is only a short walk from the beach. NO ONWARD CHAIN!!!!

This fabulous property sits on a generous plot & briefly comprises: An entrance porch, a welcoming hall with a fireplace, an airy living room with a decorative fireplace, a family room also including a decorative fireplace partnered with double doors that lead to the sun-catching garden room that overlooks the rear garden that runs along side the outstanding dining/kitchen that spans over 28ft long and a WC situated under the stairs.

To the first floor, you are met with a spacious landing that links you to the following: four well-proportioned DOUBLE bedrooms one of which includes integrated wardrobes and one of the four having a feature bay window. To further add to the list there is a superb four-piece family bathroom with a walk-in shower and a store cupboard. The second floor offers an additional DOUBLE bedroom with an en-suite shower room and eaves storage.

Externally, to the front of this imposing detached establishment is a nature filled front garden and a paved driveway. To the rear of the property there lies a patio seating area and a WEST-FACING garden surrounded with gorgeous shrubbery. And to the far end of the garden there sits a wooden sun-room, perfect for time out of the sun.

- Charming detached family home, circa 2492 square feet
- Five fantastic DOUBLE bedrooms
- Entrance porch & grand reception hallway
- Airy living room with decorative fireplace
- Spacious family room
- Sun-catching garden room
- An outstanding 28ft long kitchen diner with integrated appliances
- Spanning over three floors
- Located in central Ainsdale, it is surrounded by a wealth of local amenities, has easy access to local transport links leading to Southport & Liverpool
- Viewings available upon request

Viewing

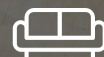
Please contact our Flexi Agent Southport Office on 01704 889455 if you wish to arrange a viewing appointment for this property or require further information.



5



2

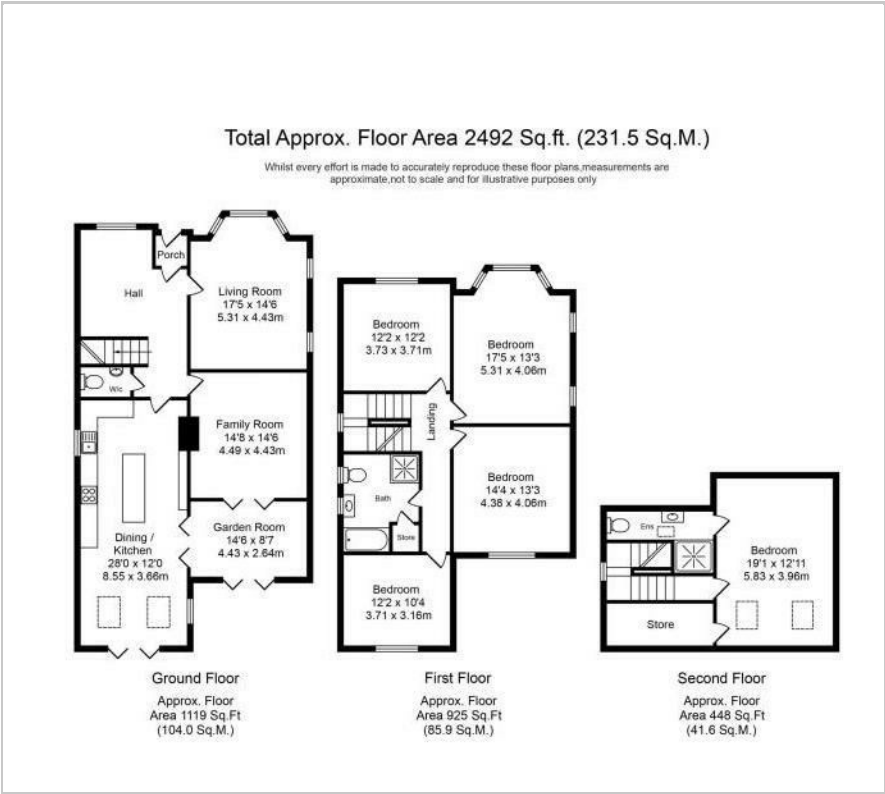


3



C

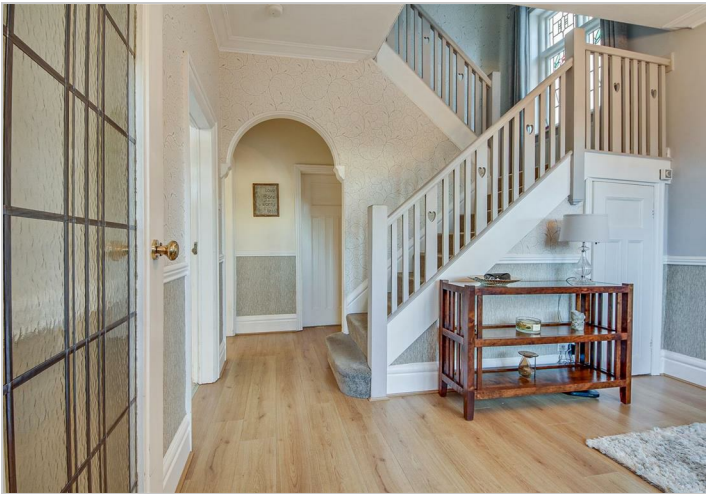
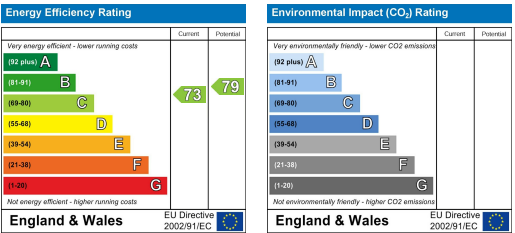
Floor Plan



Area Map



Energy Efficiency Graph



These particulars, whilst believed to be accurate are set out as a general outline only for guidance and do not constitute any part of an offer or contract. Intending purchasers should not rely on them as statements of representation of fact, but must satisfy themselves by inspection or otherwise as to their accuracy. No person in this firms employment has the authority to make or give any representation or warranty in respect of the property.