



FLEXIAGENT

Market Leading, Independent Estate Agents



Guinea Hall Close

Southport, PR9 8RG

Offers In Excess Of £280,000

Flexi-Agent are thrilled to present this charming and spacious four-bedroom semi-detached property to the open market. Nestled in the peaceful, picturesque rural area of Banks, this delightful home offers a serene retreat while still being just moments away from a wide range of local amenities. These include inviting pubs, convenience shops, and other essential services. The property is also within close proximity of the A565, providing easy access to Southport town centre, ideal for both daily commuting and leisurely outings.

The property is accessed via a side hallway entrance from the driveway, leading into a spacious and inviting front lounge. The well-presented kitchen diner boasts integrated appliances, providing both functionality and style. A convenient downstairs WC is located nearby, while double doors from the dining area open onto the rear garden.

The first floor accommodates four bedrooms, each featuring built-in storage or wardrobes. The master bedroom benefits from a private en suite. A beautifully appointed three-piece family bathroom serves the remaining rooms, and skylights throughout the first floor ensure a bright and airy atmosphere.

Externally, the property offers a front-facing garage and ample driveway parking. The low-maintenance front garden adds to the property's curb appeal. To the rear, a charming courtyard garden captures plenty of sunlight, with a delightful sun shed and an ornamental pond providing further appeal and relaxation spaces.

Viewings available upon request

- Four bedroom, Semi Detached, circa 1330 sqft
- Spacious front lounge
- Open plan kitchen diner with modern appliances
- Built in wardrobes
- Master en suite bathroom
- Modern three piece bathroom
- Driveway parking and front facing garage
- Sun catching rear garden
- Ornamental pond
- Viewings available upon request

Viewing

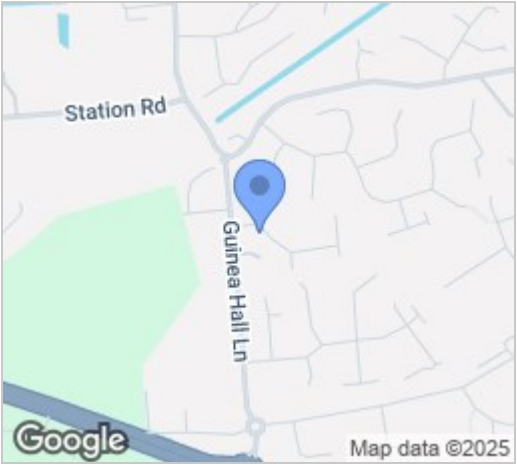
Please contact our Flexi Agent Southport Office on 01704 889455 if you wish to arrange a viewing appointment for this property or require further information.



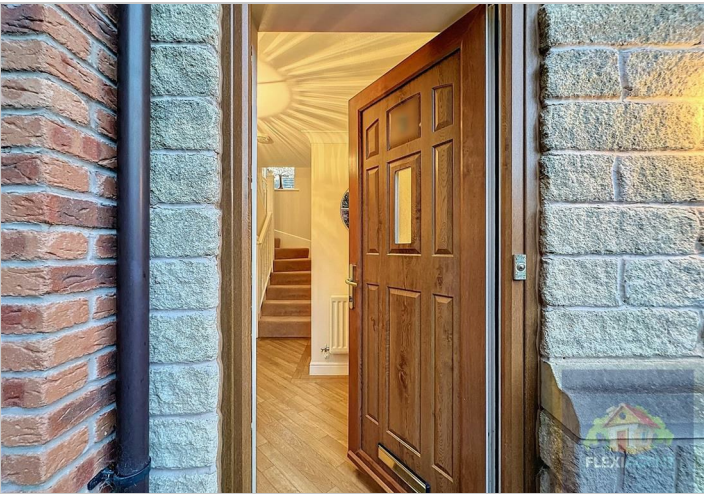
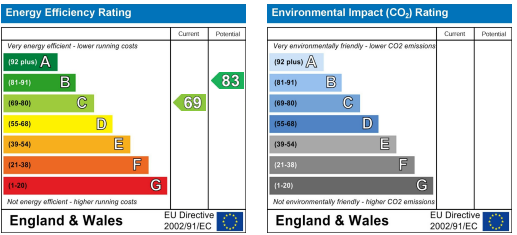
Floor Plan



Area Map



Energy Efficiency Graph



These particulars, whilst believed to be accurate are set out as a general outline only for guidance and do not constitute any part of an offer or contract. Intending purchasers should not rely on them as statements of representation of fact, but must satisfy themselves by inspection or otherwise as to their accuracy. No person in this firms employment has the authority to make or give any representation or warranty in respect of the property.