



## Thirlmere Drive

Southport, PR8 3TY

**£190,000**

\*\*\* ATTENTION INVESTOR\*\*\*

Flexi-Agent are delighted to present this **fantastic three-bedroom** semi detached property to the rental market. Ideally located between Ainsdale and Woodvale, it is surrounded by a wealth of local amenities, excellent local schools, it is close to local transport links and is a short walk from Hillside Golf Links.

This well presented property briefly comprises: Entrance hall, a spacious living room with a feature fireplace, a cosy sun room with a door leading out to the rear garden, and a fitted kitchen. To the first floor three well proportioned bedrooms and a family bathroom. The property benefits from ample storage throughout.

Externally the property boasts driveway parking, a garage and a good sized south facing garden.

Viewings are available on request.

EPC C

\*\*\* The property is being sold with sitting tenants currently paying £1050 per month \*\*\*

- Three bedrooms
- Semi detached
- Sun room
- Family bathroom
- Garage
- South facing garden
- Driveway parking
- Sought after location
- Viewings available on request
- Sold with sitting tenants

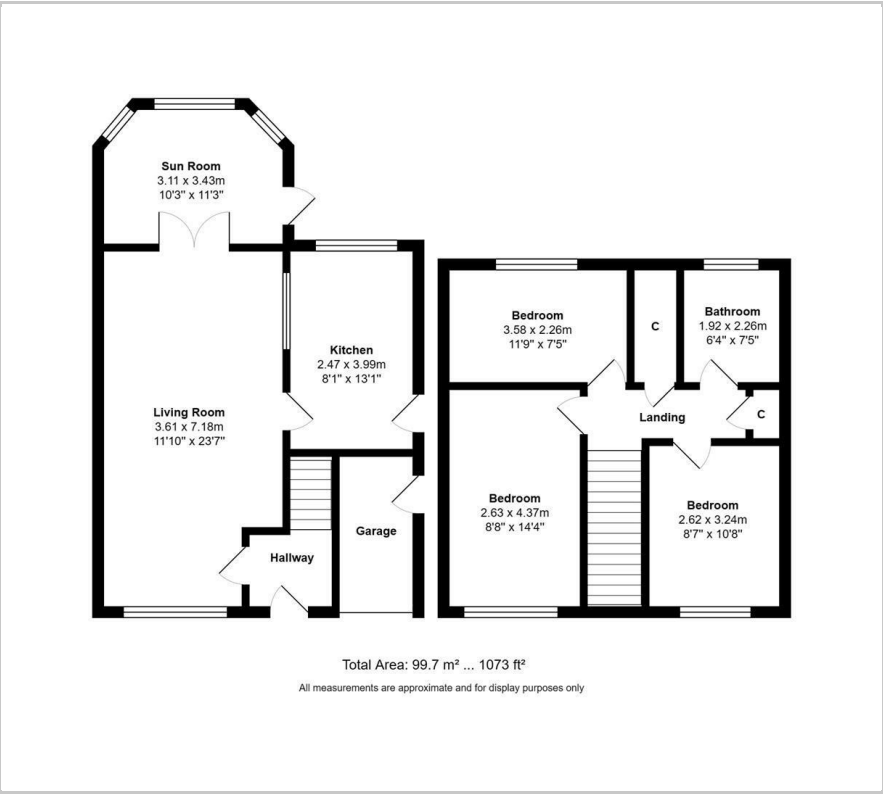
### Viewing

Please contact our Flexi-Agent Southport Lettings Office on 01704 889455 if you wish to arrange a viewing appointment for this property or require further information.





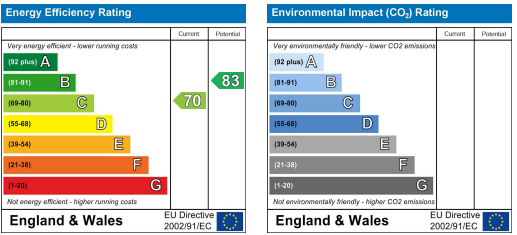
Floor Plan



Area Map



Energy Efficiency Graph



These particulars, whilst believed to be accurate are set out as a general outline only for guidance and do not constitute any part of an offer or contract. Intending purchasers should not rely on them as statements of representation of fact, but must satisfy themselves by inspection or otherwise as to their accuracy. No person in this firms employment has the authority to make or give any representation or warranty in respect of the property.