



FLEXIAGENT

Market Leading, Independent Estate Agents



Winston Crescent

Southport, PR8 6XT

Offers In The Region Of £317,500

Flexi-Agent are delighted to welcome this three bedroom detached property to the open market. Positioned on the sought after area of Kew, providing immediately access to a wealth of amenities, close to Kew retail park, easy access via transport links into Southport town centre & Southport Hospital.

The property briefly comprises of; entrance hall, WC, spacious kitchen, front lounge leading to sitting room & dining room.

The first floor briefly comprises of; three bedrooms with master featuring ensuite & three piece bathroom.

Externally the property offers front driveway parking & garage, to the rear offers a courtyard & sun catching garden.

Viewings available upon request.

Freehold
Council tax band D
EPC D

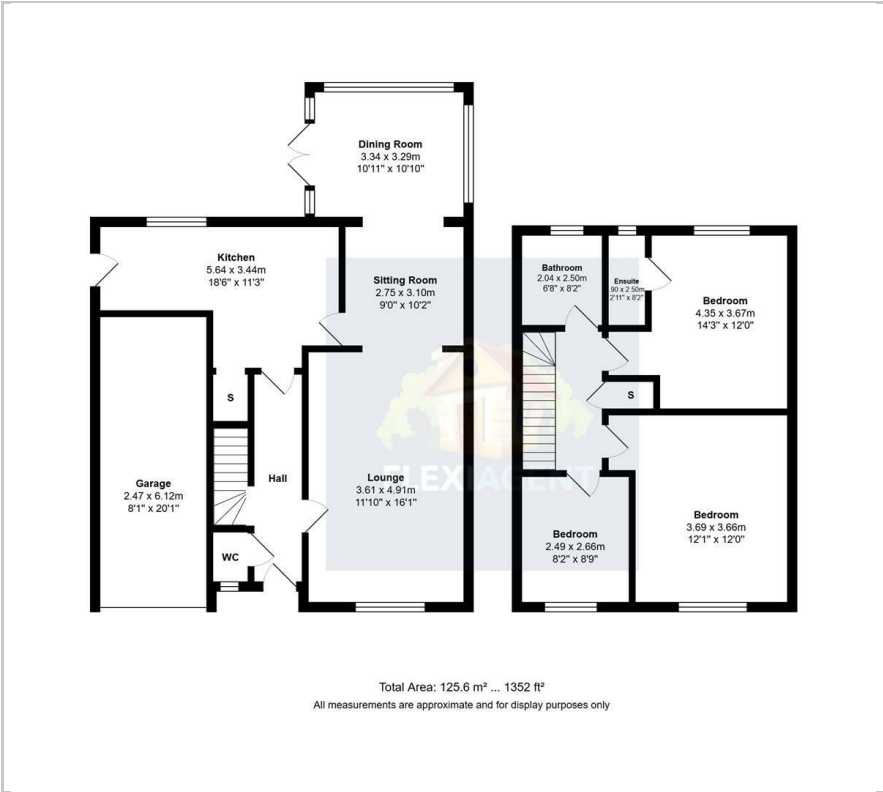
Viewing

Please contact our Flexi Agent Southport Office on 01704 889455 if you wish to arrange a viewing appointment for this property or require further information.

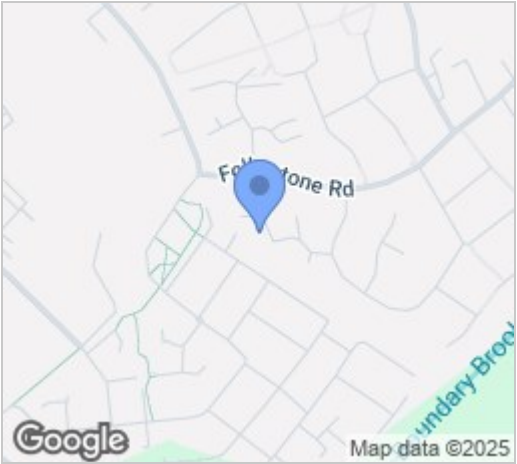
- Three bedrooms
- Detached, circa 1352 sqft
- Easy access to Kew retail park & Southport town centre
- Front lounge
- Spacious kitchen
- Sitting room & dining room
- Three piece bathroom & ensuite
- Front driveway & garage
- Rear courtyard & sun catching garden
- Viewings available upon request



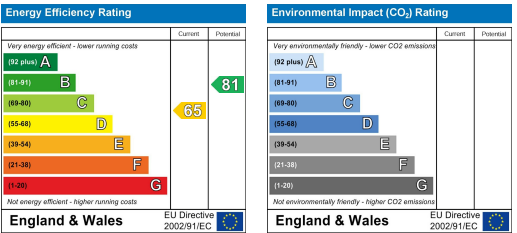
Floor Plan



Area Map



Energy Efficiency Graph



These particulars, whilst believed to be accurate are set out as a general outline only for guidance and do not constitute any part of an offer or contract. Intending purchasers should not rely on them as statements of representation of fact, but must satisfy themselves by inspection or otherwise as to their accuracy. No person in this firms employment has the authority to make or give any representation or warranty in respect of the property.