



# FLEXIAGENT

Market Leading, Independent Estate Agents



## Belvedere Road

Southport, PR8 2PA

**Offers In Excess Of £1,050,000**

Flexi-agent are delighted to present this remarkable, stunning & luxury detached **FOUR DOUBLE BEDROOMS** with over 4500 SQFT FLOOR AREA to the open market. This property offers well-thought-out interiors that exude unmatched flair. Located in the centre of Ainsdale Shoreside, this house represents the height of architectural design and provides an unmatched living environment. Available for purchase with **NO ONWARDS CHAIN**.

The property briefly comprises of; reception hallway with a magnificent twisted staircase, white tile flooring, and an amazing chandelier, a gorgeous dining room with a custom media wall, leads into a large living space at the back, and to the front is a home office and you can access the fantastic rear gardens through bi-folding doors in both rooms.

The kitchen features three ovens with warming drawers, wine chillers, and custom wall and ceiling lighting. It also features high-end integrated appliances. A light-filled area ideal for entertaining is created by an orangery that smoothly flows from the kitchen. Other features include a theatre room, sauna room, and utility room that are all accessible from the kitchen and have direct access to the attached garage.

An impressive gallery landing on the first level leads to the main bedroom with an master ensuite bathroom with a walk-in shower, dual sinks, a WC and a Jacuzzi bath. A south-facing balcony with double doors provides breath-taking views. A further three double bedrooms one with ensuite, a study, a beautiful family bathroom and a fantastic dressing room complete the first floor.

- Four double bedrooms
- Detached, circa 4565 sqft
- NO CHAIN
- Four reception rooms
- Utility room & Steam room
- Master bedroom with ensuite & balcony
- Easy access transport links
- Gated large driveway & double garage
- Rear SOUTH-EAST facing sun catching garden, Koi pond & outdoor kitchen
- Viewings available upon request

### Viewing

Please contact our Flexi Agent Southport Office on 01704 889455 if you wish to arrange a viewing appointment for this property or require further information.



4



3

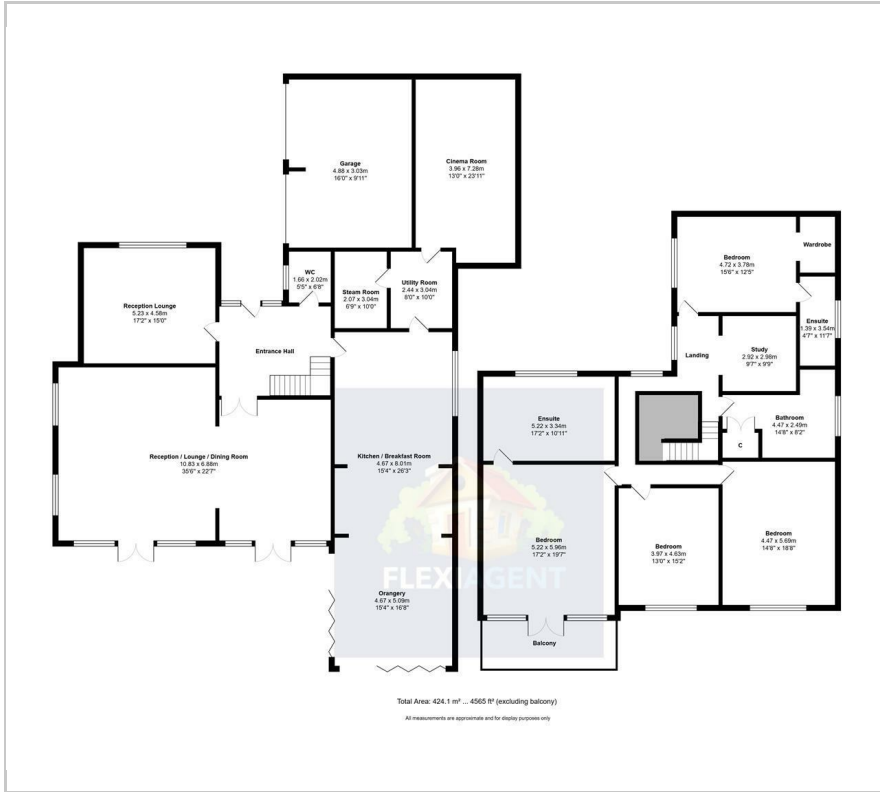


4





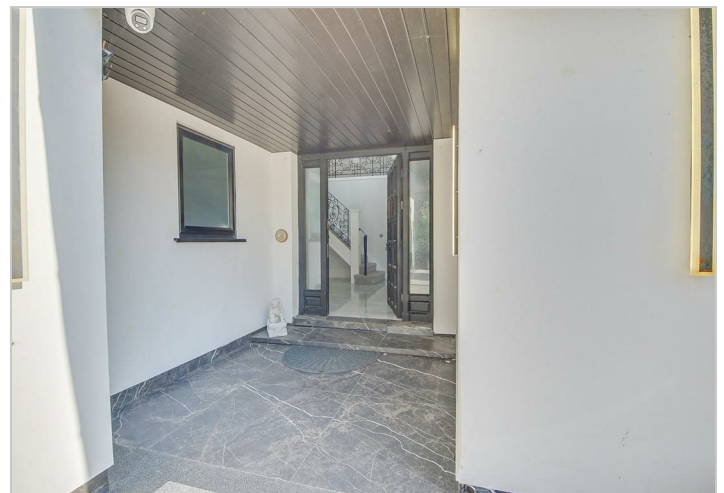
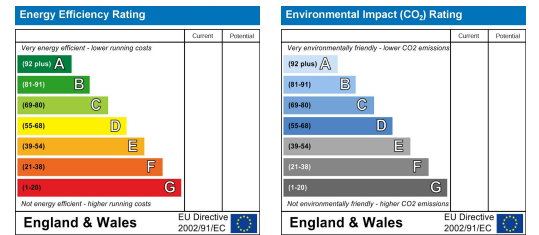
## Floor Plan



## Area Map



## Energy Efficiency Graph



These particulars, whilst believed to be accurate are set out as a general outline only for guidance and do not constitute any part of an offer or contract. Intending purchasers should not rely on them as statements of representation of fact, but must satisfy themselves by inspection or otherwise as to their accuracy. No person in this firm's employment has the authority to make or give any representation or warranty in respect of the property.