



FLEXIAGENT

Market Leading, Independent Estate Agents



Rathmore Crescent

Southport, PR9 8PN

O.I.R.O £265,000

Flexi-Agent are delighted to offer this three bedrooms semi-detached family home to the open market. The property is ideal for a family offering within walking distance the highly admirable Churchtown village which offers a plethora of amenities, including the historic Botanic gardens, a wealth of shops, boutiques, bars, restaurants and award winning schools.

The property briefly comprises: Entrance hallway, a living room with a feature bay window, a reception room with log burning stove, a well-proportioned kitchen with a door leading to the rear garden, a useful utility/storage room and a spacious conservatory perfect for entertaining. To the first floor three bedrooms and a modern four-piece family bathroom.

Externally the property benefits from ample driveway parking to the front and to the rear a very private sun catching garden.

Early inspection of this property is strongly recommended to fully appreciate the accommodation on offer.

Council Tax Band C

Leasehold
999 years

Viewing

Please contact our Flexi Agent Southport Office on 01704 889455 if you wish to arrange a viewing appointment for this property or require further information.

- Three bedrooms
- Semi detached, circa 1296 sqft
- Walking distance to Botanic Gardens
- Front lounge with bay window
- Conservatory
- Fitted kitchen with double doors to rear
- Four piece family bathroom
- Front driveway parking
- Rear courtyard decking area & sun-catching garden
- Viewings available upon request



3



1



3



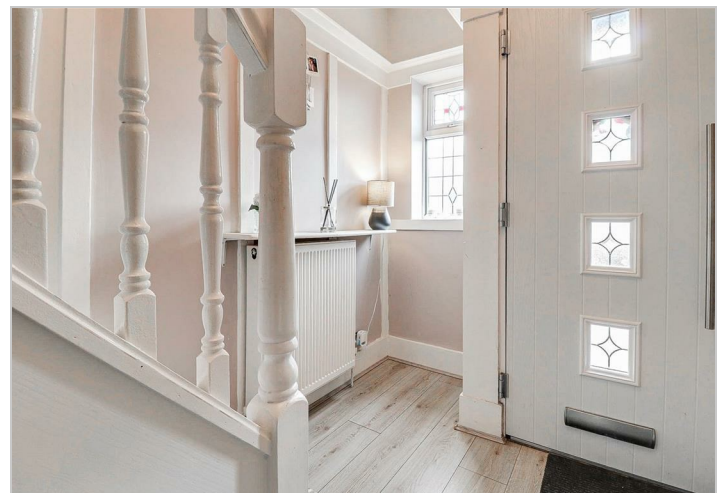
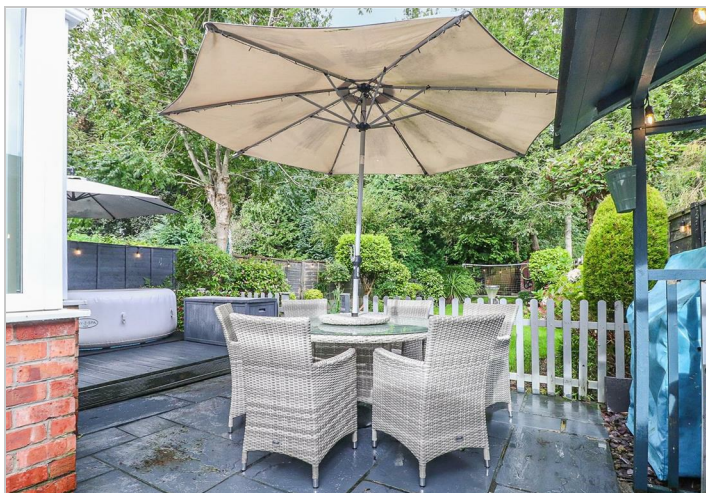
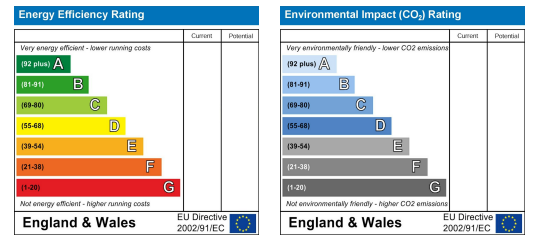
Floor Plan



Area Map



Energy Efficiency Graph



These particulars, whilst believed to be accurate are set out as a general outline only for guidance and do not constitute any part of an offer or contract. Intending purchasers should not rely on them as statements of representation of fact, but must satisfy themselves by inspection or otherwise as to their accuracy. No person in this firm's employment has the authority to make or give any representation or warranty in respect of the property.