



FLEXIAGENT

Market Leading, Independent Estate Agents



Portland Street

Southport, PR8 6QZ

Offers In Excess Of £260,000

Flexi-Agent are pleased to offer this spacious four bedroom semi-detached property to the open market. Located in Southport, it is surrounded by a wealth of local amenities, has easy access to local transport links and is a stones throw from both Southport town centre and Birkdale village.

The property briefly comprises: Entrance hallway, a spacious front living room with bay window, a second generous reception room, downstairs WC and a open plan kitchen/diner with patio doors leading to the rear garden. To the first floor four well proportioned double bedrooms one with ensuite and a family bathroom.

Externally, the property benefits from ample driveway parking and a sun-catching rear garden.

Freehold
Council Tax Band C
EPC E

Early inspection of this property is strongly recommended to fully appreciate the accommodation on offer.

Viewings available upon request.

- Four bedrooms
- Semi detached, circa 1492 sqft
- Front living room with bay window
- Rear reception room
- Dining room leading to kitchen
- Three piece bathroom & ensuite
- Close to local transport links
- Front driveway parking
- Rear private courtyard garden
- Viewings available upon request

Viewing

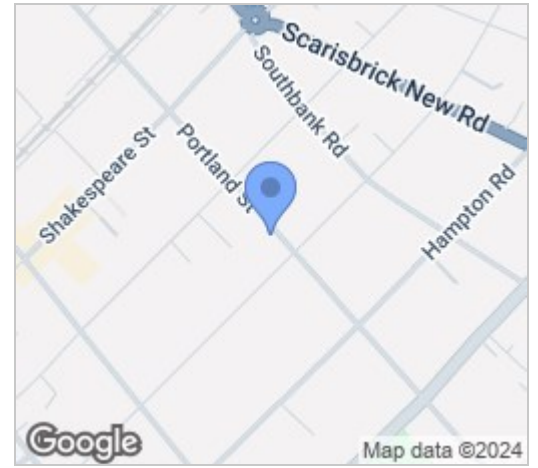
Please contact our Flexi Agent Southport Office on 01704 889455 if you wish to arrange a viewing appointment for this property or require further information.



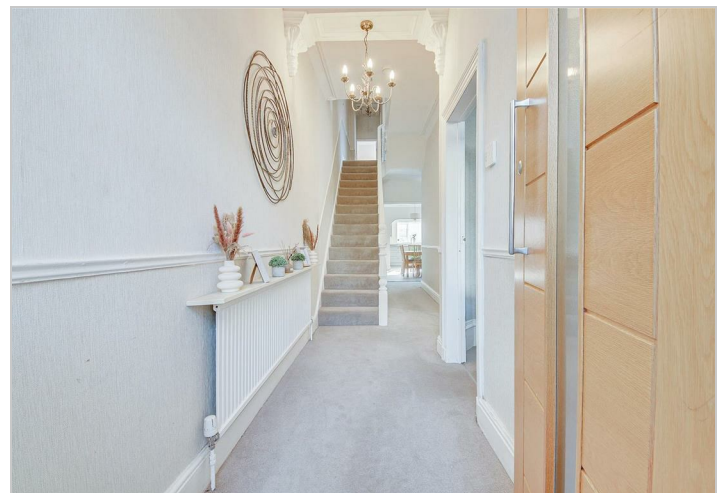
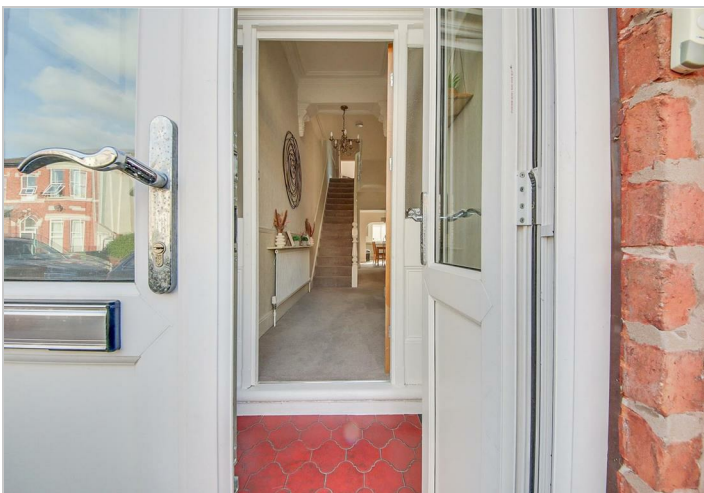
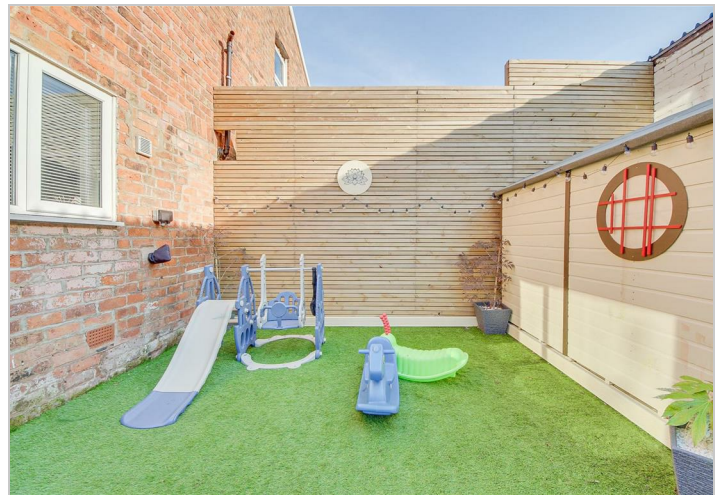
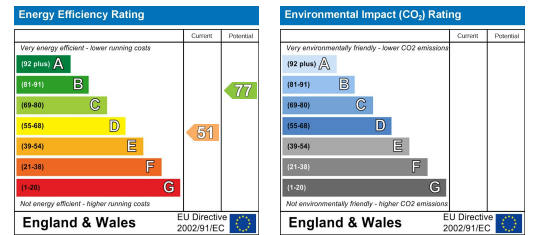
Floor Plan



Area Map



Energy Efficiency Graph



These particulars, whilst believed to be accurate are set out as a general outline only for guidance and do not constitute any part of an offer or contract. Intending purchasers should not rely on them as statements of representation of fact, but must satisfy themselves by inspection or otherwise as to their accuracy. No person in this firm's employment has the authority to make or give any representation or warranty in respect of the property.