



# FLEXIAGENT

Market Leading, Independent Estate Agents



## Blue Bird Close

Southport, PR8 5DS

**40% Shared ownership £104,000**

Flexi-Agent is delighted to present this three bedroom detached family home to the open sales market. Ideally located in-between in the area of Kew & Birkdale with great transport links into Southport Town Centre & nearby wealth of amenities. Listed price is 40% shared ownership.

The property briefly comprises of; entrance hall, storage room, spacious lounge, open plan kitchen diner with double doors leading to garden at rear.

First floor briefly comprises of; three bedrooms with master featuring an ensuite & three piece bathroom.

Externally the property offers driveway parking as well as on street parking to the front, to the rear offers a sun catching garden.

Viewings available upon request.

Leasehold  
40% Shared Ownership  
EPC: B  
Council tax band: D

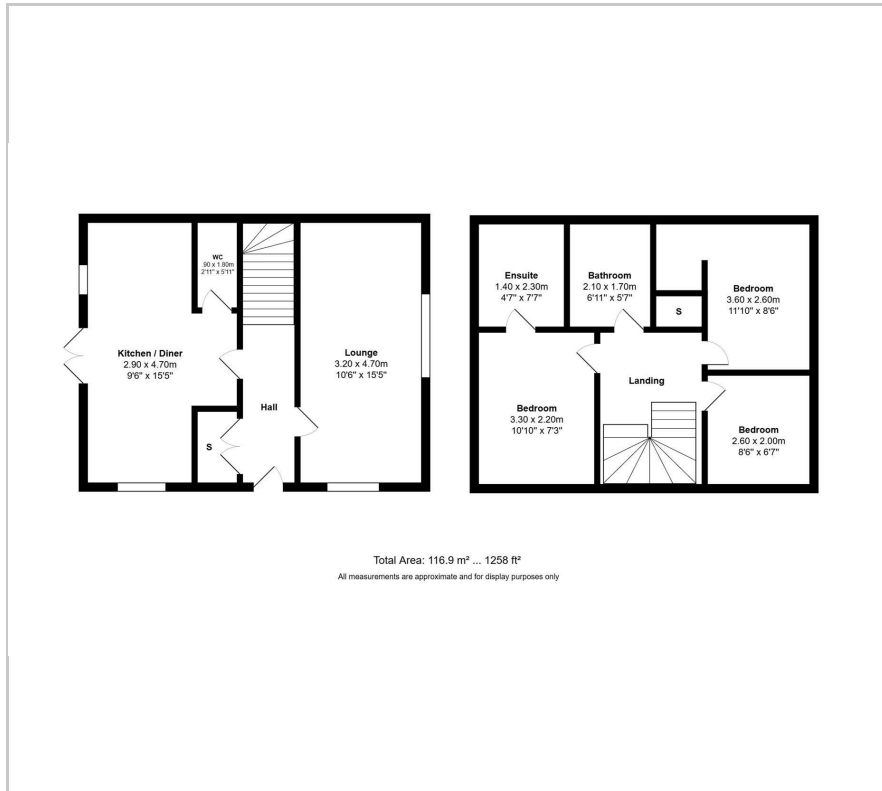
### Viewing

Please contact our Flexi Agent Southport Office on 01704 889455 if you wish to arrange a viewing appointment for this property or require further information.

- Three bedrooms
- Detached, circa 1258 sqft
- Spacious lounge
- Open plan kitchen diner
- Downstairs WC
- 40% Shared Ownership
- Three piece bathroom & ensuite
- Driveway parking
- Sun catching garden
- Viewings available upon request



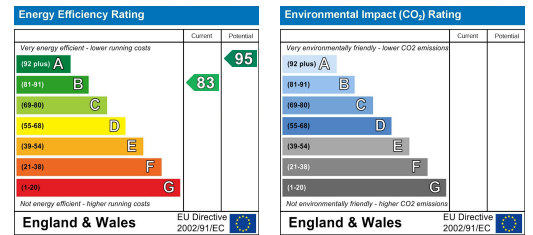
## Floor Plan



## Area Map



## Energy Efficiency Graph



These particulars, whilst believed to be accurate are set out as a general outline only for guidance and do not constitute any part of an offer or contract. Intending purchasers should not rely on them as statements of representation of fact, but must satisfy themselves by inspection or otherwise as to their accuracy. No person in this firm's employment has the authority to make or give any representation or warranty in respect of the property.