



FLEXIAGENT

Market Leading, Independent Estate Agents



Seacroft Crescent

Southport, PR9 9FR

Offers In Excess Of £300,000

Flexi Agent are delighted to present this four bedrooms demi detached property to the open market. Located in the heart of Marshside, it is surrounded by a wealth of amenities, local schools & bus links with easy access to the A565 leading into Southport town centre.

The property briefly comprises of; entrance porch, office / bedroom, WC, spacious sitting dining area, rear lounge with double doors to rear, nicely presented kitchen breakfast room with double doors to rear.

The first floor briefly comprises of; three bedrooms & four piece family bathroom.

Externally the property offers a front garden & driveway parking, to the rear offers detached garage, courtyard entertainment area & sun catching garden.

Viewings available upon request.

Freehold
Council tax band: D

Viewing

Please contact our Flexi Agent Southport Office on 01704 889455 if you wish to arrange a viewing appointment for this property or require further information.

- Four bedrooms
- Semi detached, circa 1284 sqft
- Easy access nearby transport links
- Downstairs office / bedroom
- Front sitting / dining room
- Nicely presented kitchen breakfast room
- Four piece family bathroom
- Front garden & driveway parking
- Rear detached garage, courtyard & sun catching garden
- Viewings available upon request



4



1



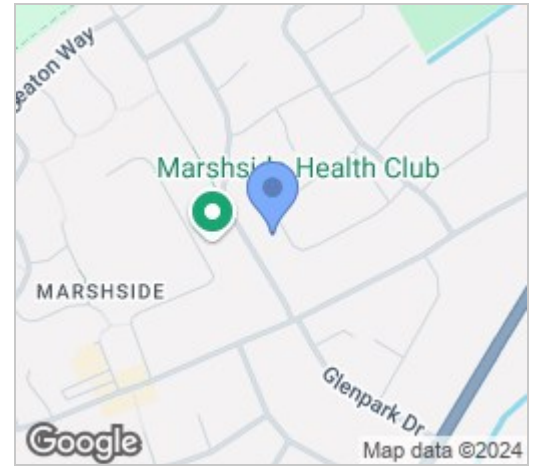
2



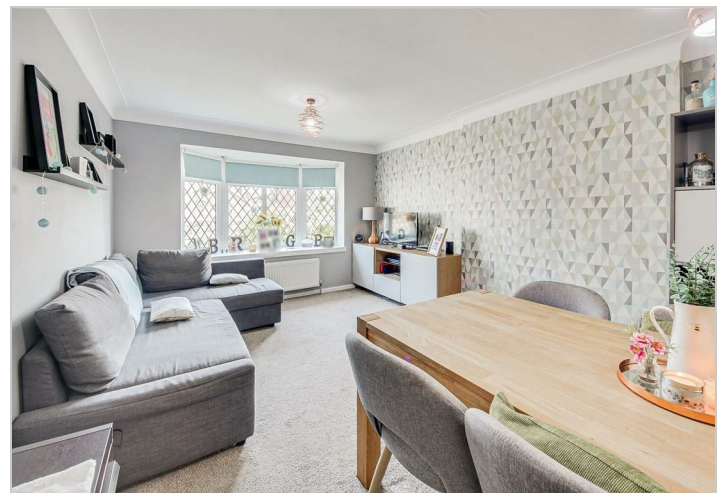
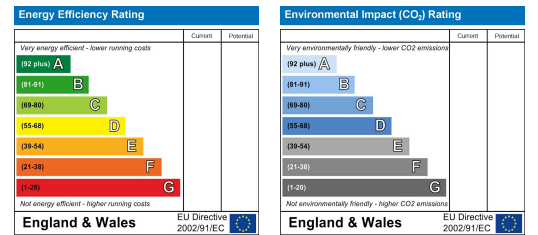
Floor Plan



Area Map



Energy Efficiency Graph



These particulars, whilst believed to be accurate are set out as a general outline only for guidance and do not constitute any part of an offer or contract. Intending purchasers should not rely on them as statements of representation of fact, but must satisfy themselves by inspection or otherwise as to their accuracy. No person in this firm's employment has the authority to make or give any representation or warranty in respect of the property.