



FLEXIAGENT

Market Leading, Independent Estate Agents



Chester Road

Southport, PR9 7HD

Offers In Excess Of £300,000

Flexi Agent are delighted to present this three bedrooms demi detached property to the open market. is situated in an excellent residential location in close proximity to a wealth of amenities, short distance from the beautiful Hesketh Park & easy access to either Southport town centre or Churchtown Village via local transport links.

The property briefly comprises of, double doors porch, hallway, front lounge with bay window, WC, open living room diner with double doors leading to rear, nicely presented kitchen.

The first floor briefly comprises of, three bedrooms with master featuring ensuite, three piece bathroom, & cupboard.

Externally the property offers front driveway parking, to the rear offers spacious courtyard, outside office / utility room with toilet, potting shed, spacious sun catching garden leading to a powered relaxing garden room.

Viewings available upon request.

Freehold
EPC D
Council tax band C

Viewing

Please contact our Flexi Agent Southport Office on 01704 889455 if you wish to arrange a viewing appointment for this property or require further information.

- Three bedrooms
- Semi detached, circa 1227 sqft
- Front lounge with bay window
- Downstairs WC
- Spacious living room diner
- Nicely presented kitchen
- Three piece bathroom & ensuite
- Front driveway parking
- Rear courtyard, sun catching garden & garden room
- Viewings available upon request



3



2



2



D

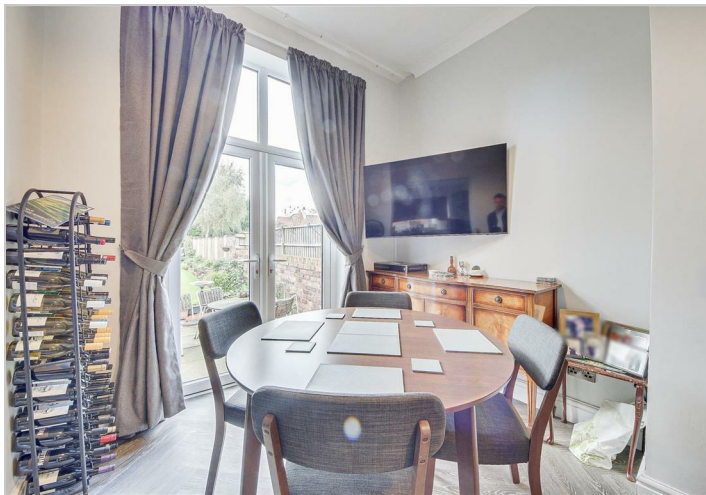
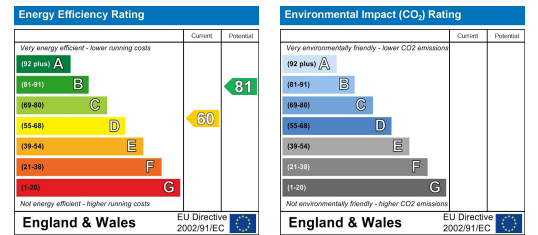
Floor Plan



Area Map



Energy Efficiency Graph



These particulars, whilst believed to be accurate are set out as a general outline only for guidance and do not constitute any part of an offer or contract. Intending purchasers should not rely on them as statements of representation of fact, but must satisfy themselves by inspection or otherwise as to their accuracy. No person in this firm's employment has the authority to make or give any representation or warranty in respect of the property.