



FLEXIAGENT

Market Leading, Independent Estate Agents



Westcliffe Road

Southport, PR8 2BL

Offers In Excess Of £210,000

Flexi Agent are delighted to presented this TWO DOUBLE BEDROOMS apartment to the open market. Situated a short distance from Birkdale village offering a range of amenities, shops, cafes & bars as well as nearby transport links into Southport town centre.

The property briefly comprises of; entrance hall, two double bedrooms, a spacious lounge, four piece bathroom, nicely presented kitchen.

Externally the property offers driveway parking, well maintained front garden & shared garage, to the rear offers an expansive communal garden & basement access.

Viewings available upon request.

Leasehold

Ground rent: £40 per annum

Service charge: £75 per month

Council tax band: B

- Two double bedrooms
- Ground floor apartment, circa 1901 sqft
- Leasehold
- Spacious lounge
- Nicely presented kitchen
- Four piece bathroom
- Front drive parking & shared garage
- Expansive communal rear garden
- Rear basement access
- Viewings available upon request

Viewing

Please contact our Flexi Agent Southport Office on 01704 889455 if you wish to arrange a viewing appointment for this property or require further information.



2



1

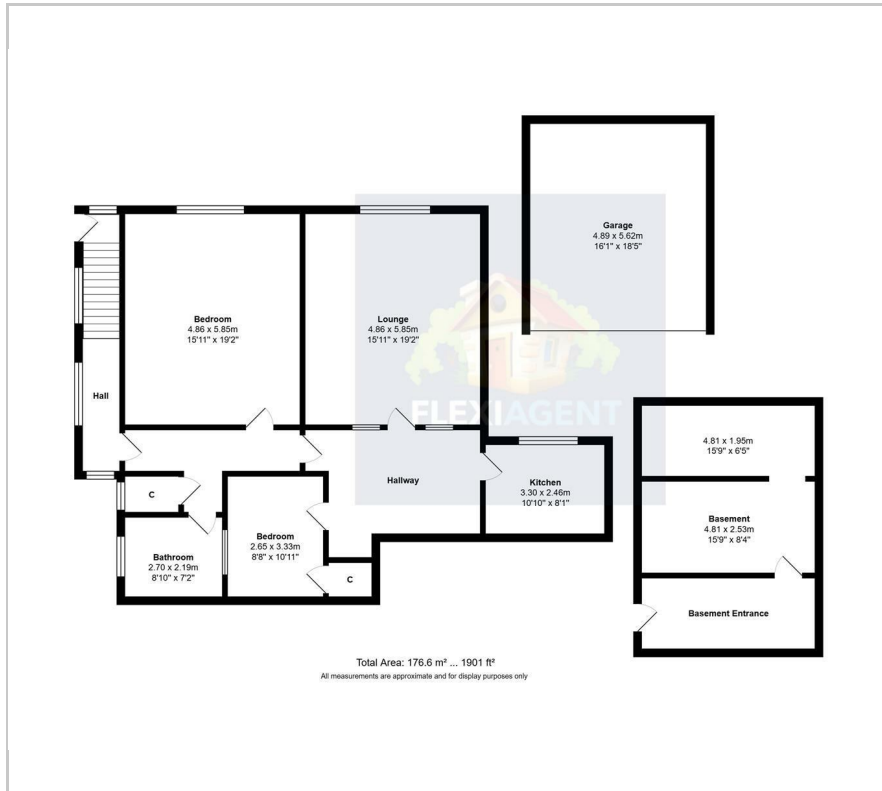


1

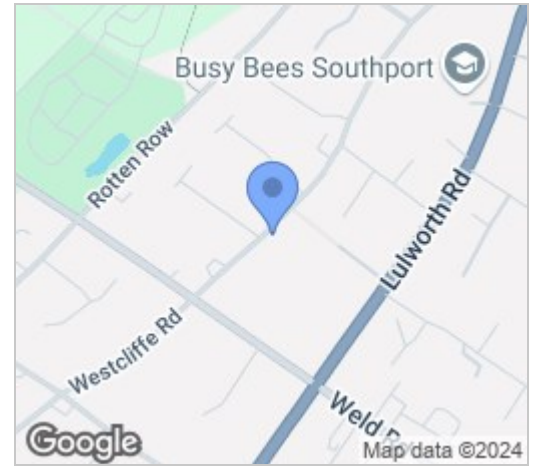


C

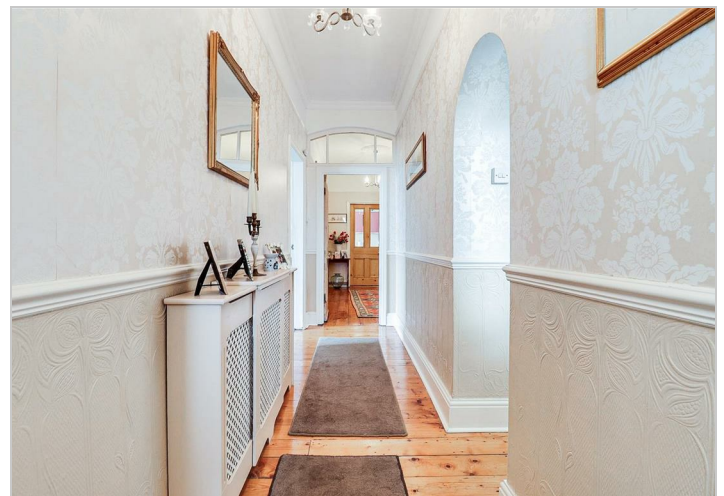
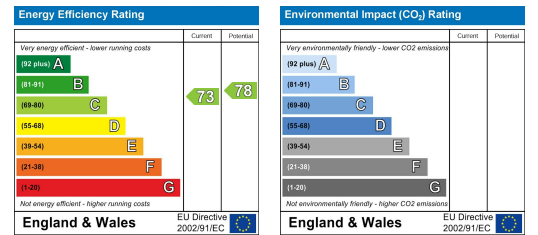
Floor Plan



Area Map



Energy Efficiency Graph



These particulars, whilst believed to be accurate are set out as a general outline only for guidance and do not constitute any part of an offer or contract. Intending purchasers should not rely on them as statements of representation of fact, but must satisfy themselves by inspection or otherwise as to their accuracy. No person in this firm's employment has the authority to make or give any representation or warranty in respect of the property.