



# FLEXIAGENT

Market Leading, Independent Estate Agents



## Gravel Lane Southport, PR9 8BU £80,000

Flexi-Agent are proud to present this beautiful two bedroom park home to the open market. Located in the family-friendly Brooklyn park, it is close to the beautiful Southport seafront, with great amenities close by, and on the site are plenty of bars & cafes, swimming pool & splash park, steam room & sauna, adventure park & more. Available for purchase with NO ONWARDS CHAIN

The property briefly comprises: A spacious open-plan living space with a dining area and a modern kitchen which includes integrated appliances two well-proportioned double bedrooms one with an ensuite and a modern showroom.

Externally the property benefits from a sun-catching decked area and parking.

Early inspection of this property is strongly recommended to fully appreciate the accommodation on offer.

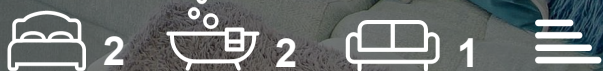
Viewing is available immediately by appointment.

Leasehold  
Site fees: £5,290.00 per annum  
NO CHAIN

### Viewing

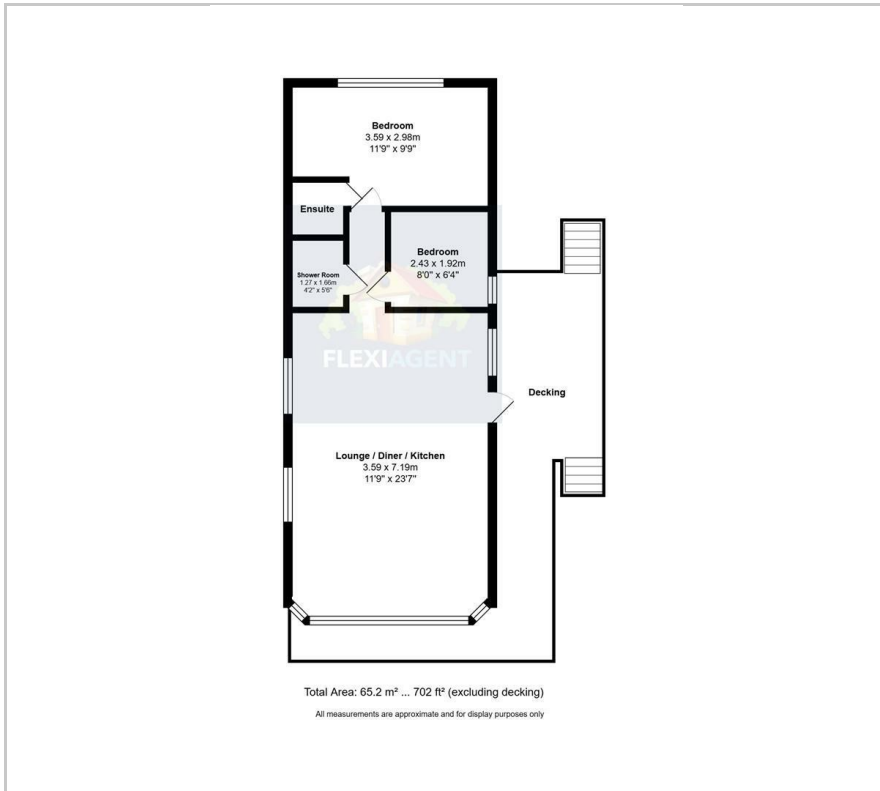
Please contact our Flexi Agent Southport Office on 01704 889455 if you wish to arrange a viewing appointment for this property or require further information.

- Two bedroom park home, circa 702 sqft
- Ensuite
- Modern throughout
- Large sun catching deck
- Parking
- Access to all park facilities
- Integrated appliances
- Viewings available on request
- Open plan living
- Great transport links





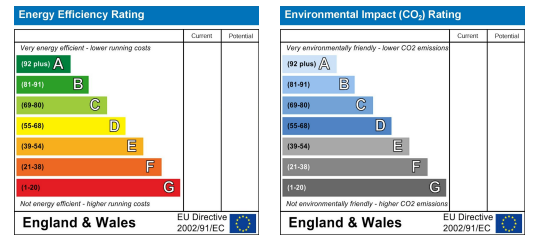
## Floor Plan



## Area Map



## Energy Efficiency Graph



These particulars, whilst believed to be accurate are set out as a general outline only for guidance and do not constitute any part of an offer or contract. Intending purchasers should not rely on them as statements of representation of fact, but must satisfy themselves by inspection or otherwise as to their accuracy. No person in this firm's employment has the authority to make or give any representation or warranty in respect of the property.