



FLEXIAGENT

Market Leading, Independent Estate Agents



Castle Walk Southport, PR8 2AR

£280,000

Flexi Agent are proud to promote this EXCELLENT INVESTMENT OPPORTUNITY, currently FULLY LET achieving approximately £28,320 PER ANNUM! Available for purchase with NO ONWARDS CHAIN.

Located in-between Birkdale village & Southport town centre, both offering a range amenities, shops, cafes, bars and great public transport links close to hand.

The property is split into 5 self contained apartments, each one let at £472 per calendar month. Situated in a central Southport position, this is an ideal investment opportunity, each property has it's own title.

Externally, the property on-street parking in the nearby area.

Viewings available upon request.

Freehold
NO CHAIN
Council tax band: A

Viewing

Please contact our Flexi Agent Southport Office on 01704 889455 if you wish to arrange a viewing appointment for this property or require further information.

- Five apartments
- Excellent investment opportunity
- Each apartment currently let for £472pcm
- Circa £28,320 per annum return
- Fantastic investment return
- Central Southport location
- Walking distance to Southport Town Centre
- Fantastic BTL business
- Recent upgrades made
- NO CHAIN



5



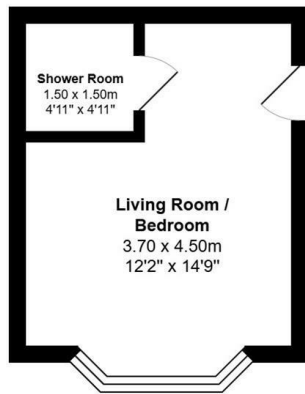
5



5



Floor Plan



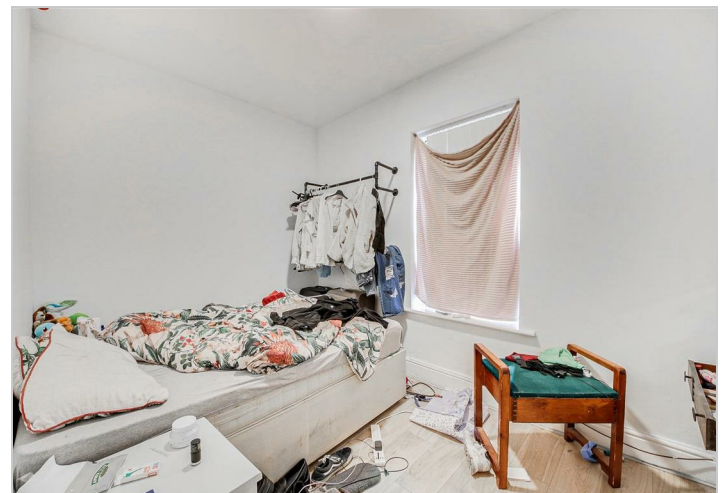
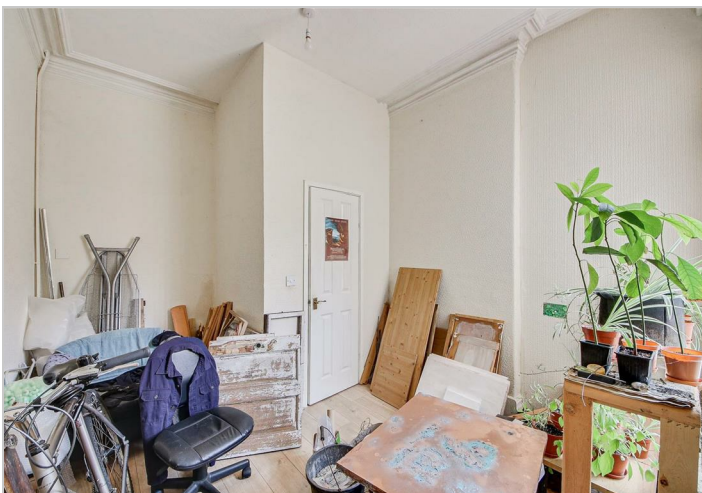
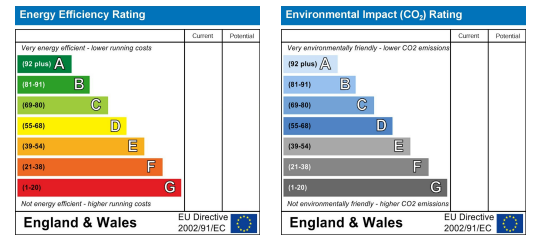
Total Area: 17.4 m² ... 188 ft²

All measurements are approximate and for display purposes only

Area Map



Energy Efficiency Graph



These particulars, whilst believed to be accurate are set out as a general outline only for guidance and do not constitute any part of an offer or contract. Intending purchasers should not rely on them as statements of representation of fact, but must satisfy themselves by inspection or otherwise as to their accuracy. No person in this firm's employment has the authority to make or give any representation or warranty in respect of the property.