



Rivington Close

Southport, PR8 4DP

£150,000

Flexi-Agent are delighted to present this fantastic two bedroom apartment to the open sales market. Located in the sought after residential area of Birkdale, it is surrounded by a wealth of local amenities, is a short walk from local transport links providing easy access to Southport town centre, & is a stone's throw from the idyllic Birkdale village. Available for purchase with NO ONWARDS CHAIN.

The property briefly comprises: Entrance hallway, a spacious living room, a modern fitted kitchen with integrated appliances, two well-proportioned bedrooms and a three piece bathroom as well as a large loft area partially boarded out.

Externally the property benefits from off-road parking & garage.

Early inspection of this property is strongly recommended to fully appreciate the accommodation on offer.

NO CHAIN
Council tax band B
Leasehold: details TBC

Viewing is available immediately by appointment.

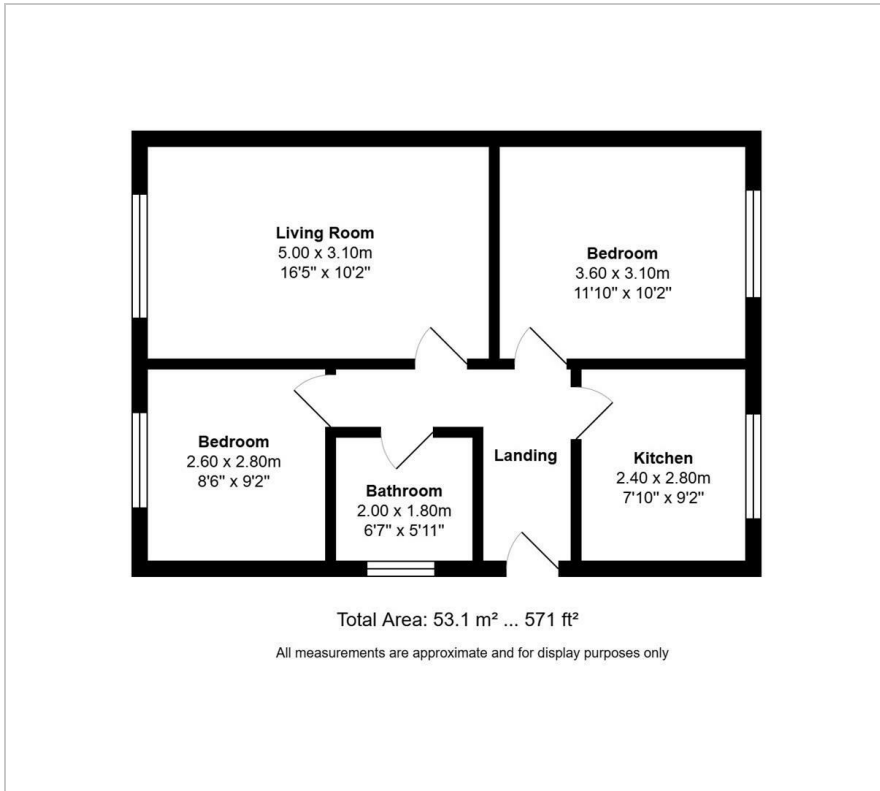
Viewing

Please contact our Flexi-Agent Southport Lettings Office on 01704 889455 if you wish to arrange a viewing appointment for this property or require further information.

- Two bedrooms apartment, circa 571 square foot
- Sought after location
- Short walk to Birkdale village
- Modern throughout
- Off road parking & garage
- Spacious living room
- Modern fitted kitchen with integrated appliances
- Three piece bathroom
- NO CHAIN
- Viewings available on request



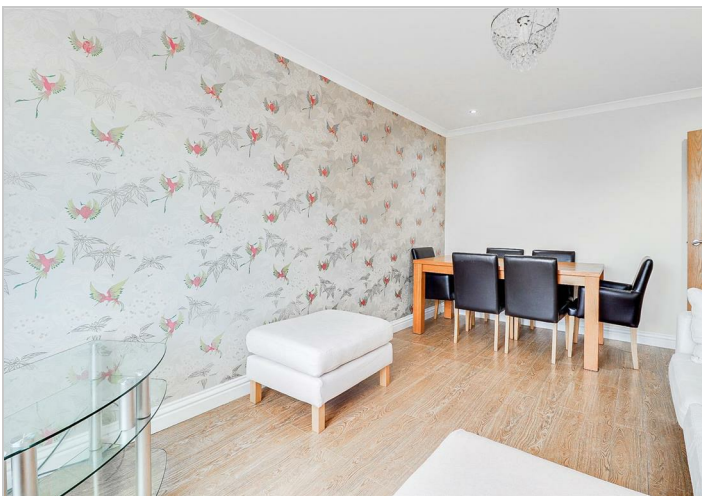
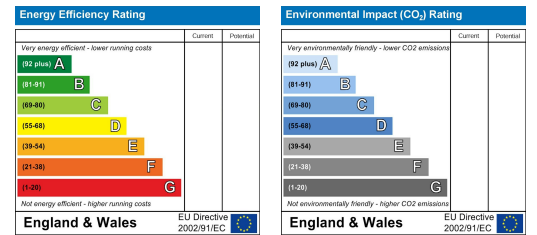
Floor Plan



Area Map



Energy Efficiency Graph



These particulars, whilst believed to be accurate are set out as a general outline only for guidance and do not constitute any part of an offer or contract. Intending purchasers should not rely on them as statements of representation of fact, but must satisfy themselves by inspection or otherwise as to their accuracy. No person in this firm's employment has the authority to make or give any representation or warranty in respect of the property.