



FLEXIAGENT

Market Leading, Independent Estate Agents



Northam Close

Southport, PR9 9GA

Offers In Excess Of £220,000

Flexi Agent are proud to present this three bedroom semi-detached family home to the open market. Amenities are close at hand, with local shops, schools & transport links all being situated nearby, with the historical Churchtown Village & Botanical Gardens being only a short drive away.

The property briefly comprises of, open plan lounge dining room, galley style kitchen & conservatory.

The first floor briefly comprises of three bedrooms with master featuring built in wardrobe & nicely presented three piece family bathroom.

Externally the property offers front driveway parking an low maintenance garden, to the rear offers a detached garage followed by a courtyard garden.

Viewings available upon request.

Freehold
Council tax band: C
EPC: D

Viewing

Please contact our Flexi Agent Southport Office on 01704 889455 if you wish to arrange a viewing appointment for this property or require further information.

- Three bedroom
- Semi detached
- Churchtown Village & Botanical Gardens short drive away
- Open plan lounge diner
- Galley style kitchen
- Conservatory
- Three piece family bathroom
- Driveway parking
- Private rear courtyard garden
- Viewings available upon request



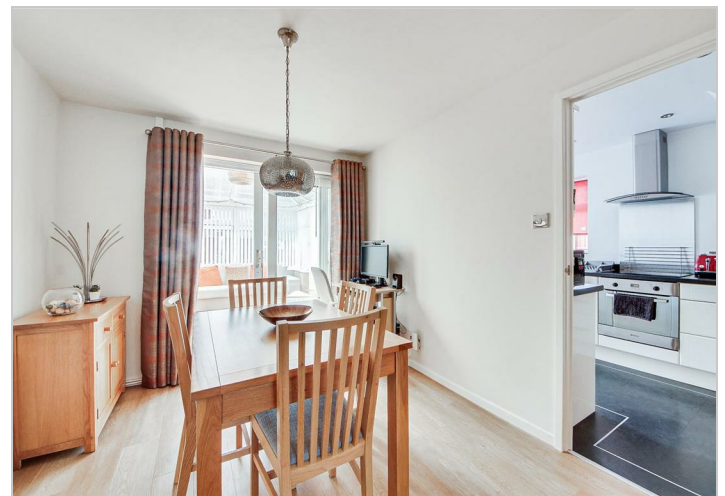
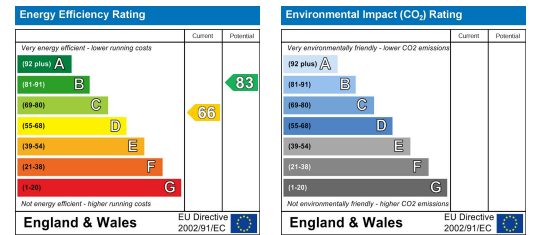
Floor Plan



Area Map



Energy Efficiency Graph



These particulars, whilst believed to be accurate are set out as a general outline only for guidance and do not constitute any part of an offer or contract. Intending purchasers should not rely on them as statements of representation of fact, but must satisfy themselves by inspection or otherwise as to their accuracy. No person in this firm's employment has the authority to make or give any representation or warranty in respect of the property.