



FLEXIAGENT

Market Leading, Independent Estate Agents



Eastbourne Road

Birkdale, Southport, PR8 4DT

Offers In Excess Of £190,000

Flexi Agent are pleased to present this three bedroom semi detached property to the open sales market. The property is in an excellent location, being situated walking distance from Birkdale village with a plethora of amenities on offer & short distance into Southport town centre. Available for purchase with NO ONWARDS CHAIN.

The property briefly comprises of; front lounge with bay window, spacious kitchen with bi-fold doors leading to rear.

The first floor briefly comprises of; three bedrooms & three piece bathroom.

Externally the property offers front driveway parking to the front, to the rear offers a private courtyard.

Viewings available upon request.

NO CHAIN
Freehold
Council tax band: B
EPC: E

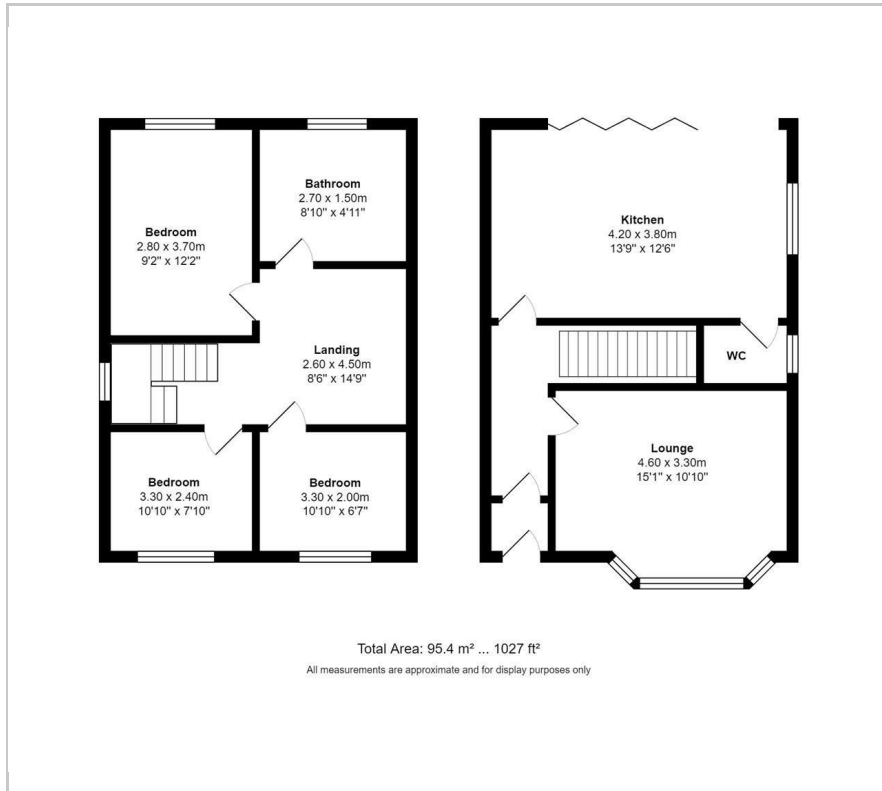
Viewing

Please contact our Flexi Agent Southport Office on 01704 889455 if you wish to arrange a viewing appointment for this property or require further information.

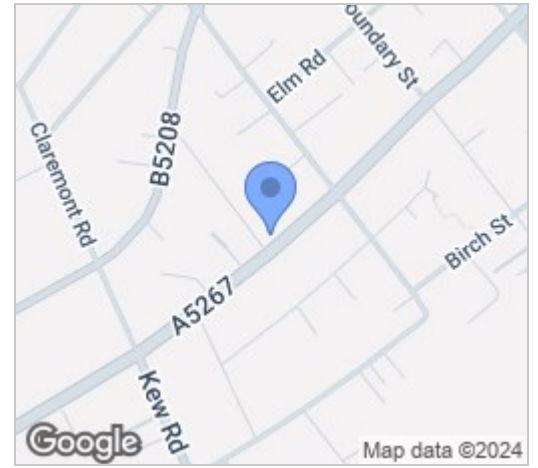
- Three bedroom
- Semi detached
- NO CHAIN
- Front lounge with bay window
- Spacious kitchen
- Bathroom & WC
- Front drive parking
- Rear private courtyard
- Short distance from Birkdale Village
- Viewings available upon request



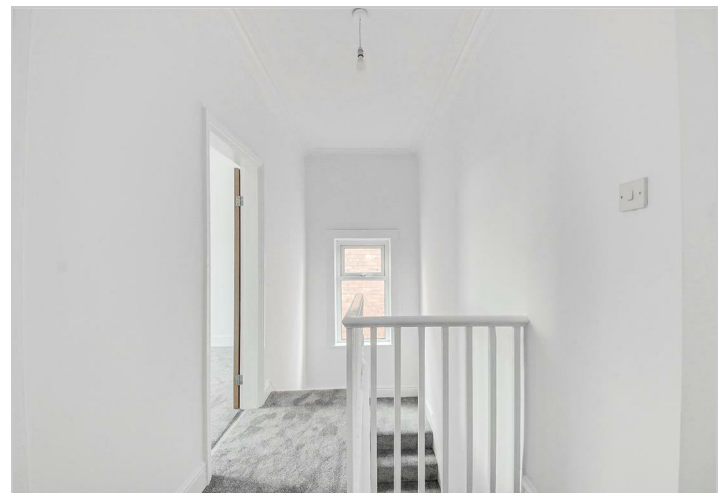
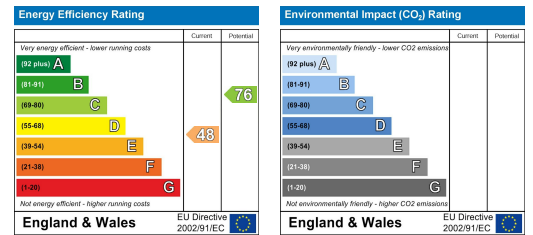
Floor Plan



Area Map



Energy Efficiency Graph



These particulars, whilst believed to be accurate are set out as a general outline only for guidance and do not constitute any part of an offer or contract. Intending purchasers should not rely on them as statements of representation of fact, but must satisfy themselves by inspection or otherwise as to their accuracy. No person in this firm's employment has the authority to make or give any representation or warranty in respect of the property.