



FLEXIAGENT

Market Leading, Independent Estate Agents



Liverpool Road

Southport, PR8 3BJ

Offers In The Region Of £260,000

Flexi-Agent is delighted to present this three bedroom semi detached property to the open market. Located in the heart of Ainsdale Village, it has great transport links, walking distance to local schools & is nearby a wealth of amenities including: shops bars & restaurants with Miller & Carter next door to note. Available for purchase with NO ONWARDS CHAIN.

The property briefly comprises of; entrance porch, spacious front lounge with bay window, dining room, galley style kitchen & conservatory.

The first floor briefly comprises of; three bedrooms all with wardrobe storage & master bedroom facing the front with bay window, nicely presented three piece bathroom.

Externally the property offers on street parking & low maintenance garden, to the rear offers a courtyard entertainment area leading to a sun catching garden.

Viewings available upon request.

Leasehold peppercorn
Ground rent £10 per annum
NO CHAIN
Council tax band: C

Viewing

Please contact our Flexi Agent Southport Office on 01704 889455 if you wish to arrange a viewing appointment for this property or require further information.

- Three bedroom
- Semi detached
- NO CHAIN
- Spacious front lounge
- Dining room with sliding door leading to Conservatory
- All bedrooms with wardrobe storage
- Nicely presented three piece bathroom
- Courtyard & sun catching garden to rear
- On street parking
- Viewings available upon request



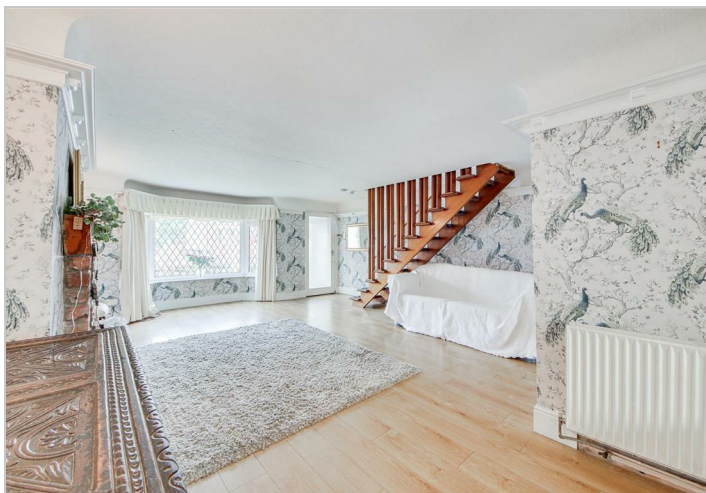
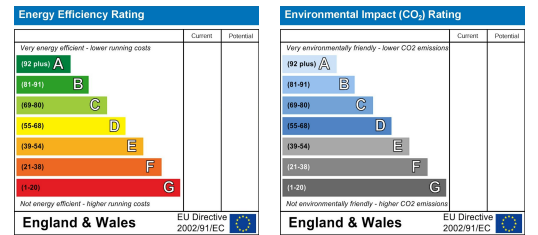
Floor Plan



Area Map



Energy Efficiency Graph



These particulars, whilst believed to be accurate are set out as a general outline only for guidance and do not constitute any part of an offer or contract. Intending purchasers should not rely on them as statements of representation of fact, but must satisfy themselves by inspection or otherwise as to their accuracy. No person in this firm's employment has the authority to make or give any representation or warranty in respect of the property.