



FLEXIAGENT

Market Leading, Independent Estate Agents



Walmer Road

Southport, PR8 4SX

£750 Per Month

Flexi-Agent are delighted to present this fantastic newly refurbished one bedroom Apartment to the rental market. Located in the sought after residential area of Birkdale, it is surrounded by a wealth of local amenities, is a short walk from local transport links providing easy access to Southport town centre, & is a stone's throw from the idyllic Birkdale village.

The property Briefly comprises; Communal entrance hallway, lounge diner, fitted kitchen, one double bedroom and a three-piece bathroom.

Externally the property benefits from off road parking.

Early inspection of this property is strongly recommended to fully appreciate the accommodation on offer.

Viewing is available immediately by appointment.

Viewing

Please contact our Flexi Agent Southport Office on 01704 889455 if you wish to arrange a viewing appointment for this property or require further information.

- One double bedroom
- First floor apartment
- Victorian conversion
- 518 square feet
- Amazing location
- Allocated parking space
- Close proximity to Birkdale Village
- Great transport links
- Available in August 2024
- Deposit £865.38



1



1

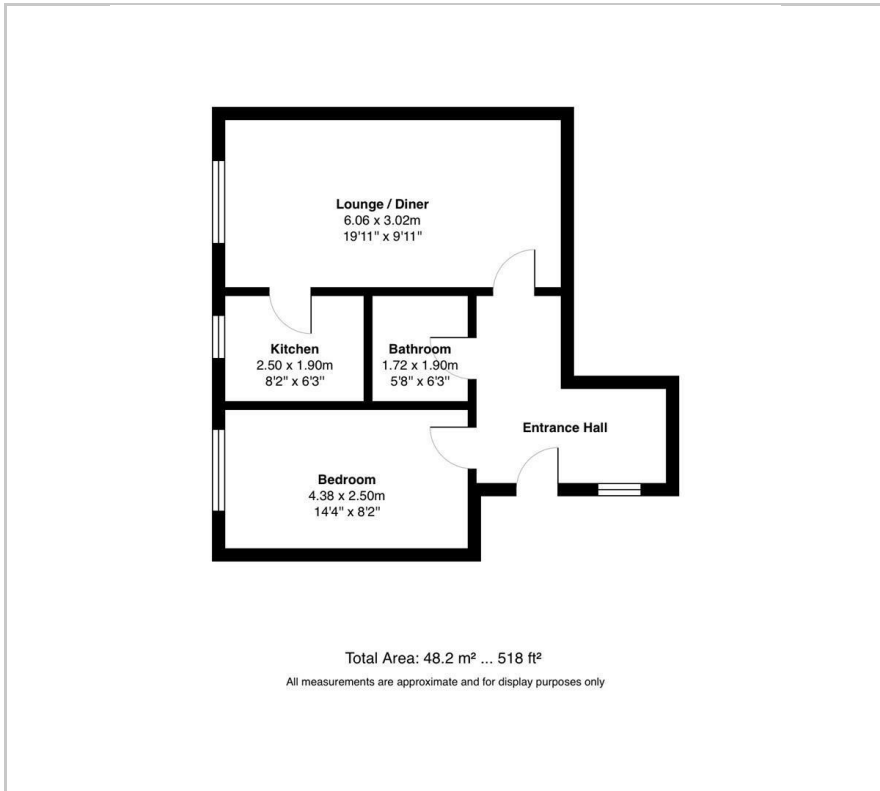


1



E

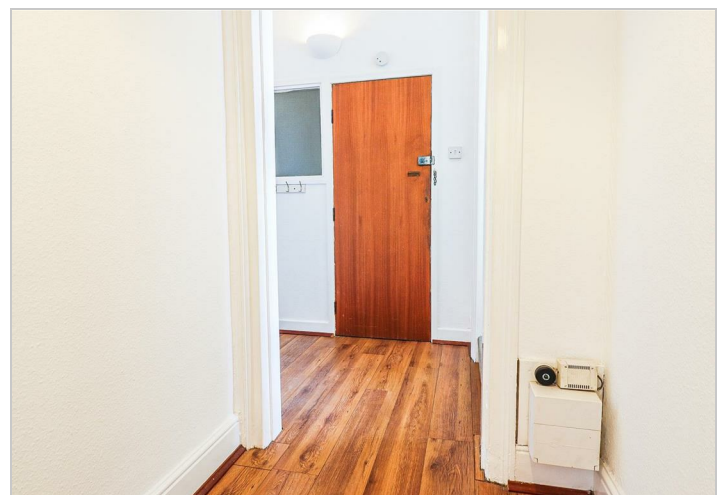
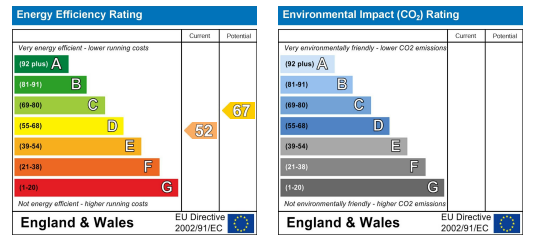
Floor Plan



Area Map



Energy Efficiency Graph



These particulars, whilst believed to be accurate are set out as a general outline only for guidance and do not constitute any part of an offer or contract. Intending purchasers should not rely on them as statements of representation of fact, but must satisfy themselves by inspection or otherwise as to their accuracy. No person in this firm's employment has the authority to make or give any representation or warranty in respect of the property.