



# FLEXIAGENT

Market Leading, Independent Estate Agents



## Treen Close

Southport, PR9 9TR

£900

**\*\*LET PRIOR TO MARKETING\*\***

Flexi-agent are delighted to offer this stunning two bedroom semi-detached family home, situated in the sought after residential district of Marshside. Fantastic schools, shops and amenities are all on hand, making this an ideal home for first time buyers and families alike.

The property briefly comprises: Porch, spacious open plan lounge/diner and fitted kitchen with access to the rear garden. To the first floor there are two DOUBLE bedrooms and a three piece family bathroom. The property is in excellent internal & external condition.

Externally, the property offers a private driveway, detached garage and beautifully landscaped front and rear sun-catching gardens.

Early inspection of this property is strongly recommended to fully appreciate the accommodation on offer.

Freehold  
Council tax band B

Viewings available upon request.

### Viewing

Please contact our Flexi Agent Southport Office on 01704 889455 if you wish to arrange a viewing appointment for this property or require further information.

**\*\*LET PRIOR TO MARKETING\*\***

- Two DOUBLE bedrooms
- Open plan lounge/diner
- Cul-de-sac location
- Ideal first time buy
- Three piece family bathroom
- Driveway parking
- Detached garage
- Landscaped gardens
- Freehold



2



1

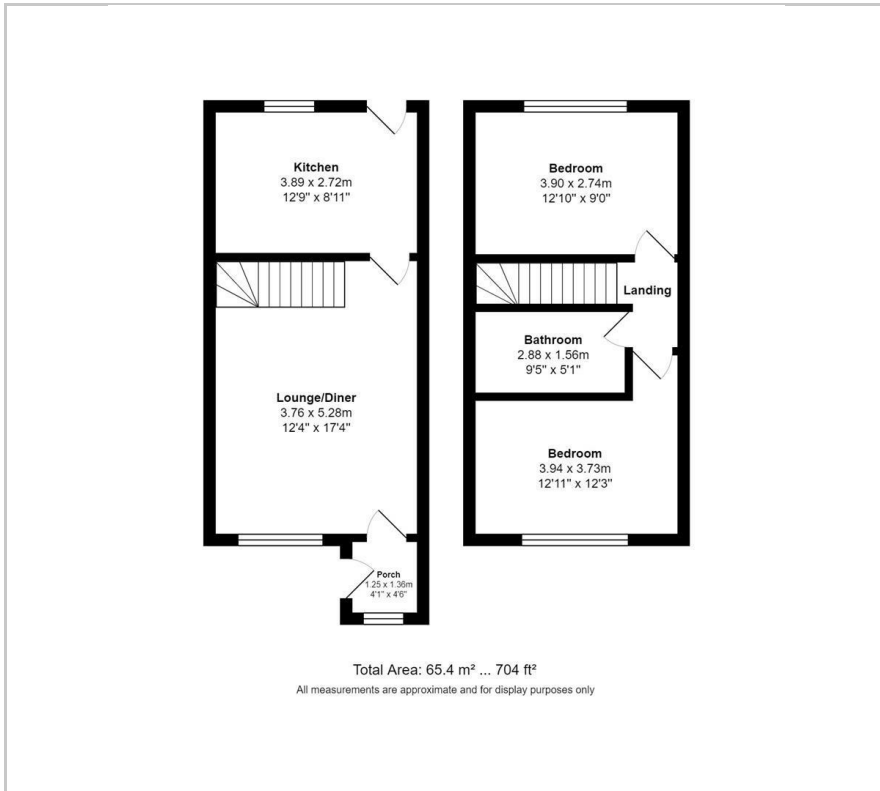


1

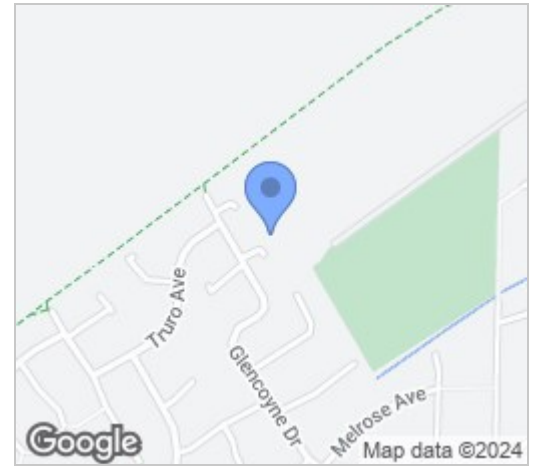


C

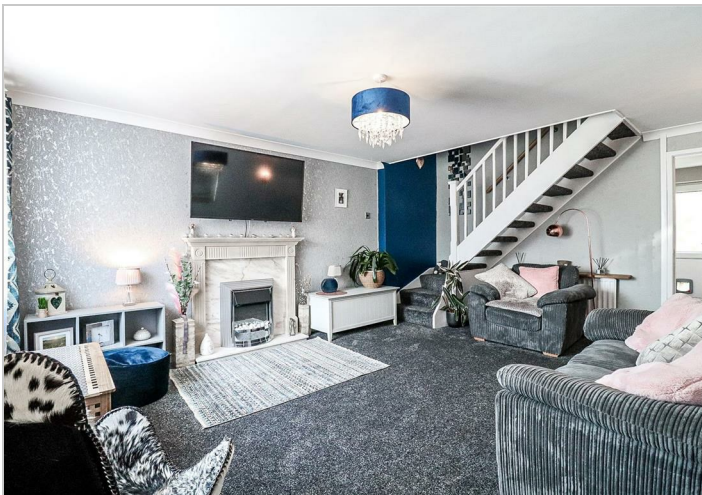
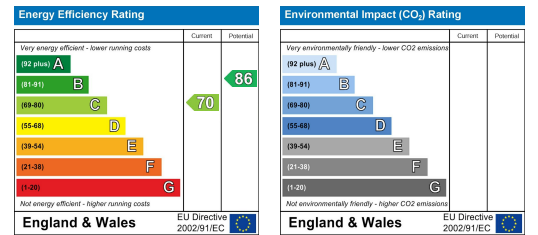
## Floor Plan



## Area Map



## Energy Efficiency Graph



These particulars, whilst believed to be accurate are set out as a general outline only for guidance and do not constitute any part of an offer or contract. Intending purchasers should not rely on them as statements of representation of fact, but must satisfy themselves by inspection or otherwise as to their accuracy. No person in this firm's employment has the authority to make or give any representation or warranty in respect of the property.