



FLEXIAGENT

Market Leading, Independent Estate Agents



Mill Road

Southport, PR8 3HU

Offers In Excess Of £250,000

OPEN DAY SUNDAY 7TH JULY FROM 1.30PM ONWARDS - PLEASE CONTACT THE OFFICE TO ARRANGE YOUR INDIVIDUAL APPOINTMENT SLOT

Flexi-Agent is delighted to present this three bedroom semi detached property to the open market. Located in the heart of Ainsdale Village, it has great transport links and is nearby a wealth of amenities including: shops bars and restaurants.

The property briefly comprises of; entrance porch, WC, living room with bay window, spacious kitchen diner with double doors leading to rear.

The first floor briefly comprises of, three bedrooms, bathroom & WC.

Externally the property offers driveway parking & side storage, to the rear offers a decked entertainment area followed by an expansive rear sun catching garden.

Viewings available upon request.

Freehold
Council tax band: C
EPC: D

Viewing

Please contact our Flexi Agent Southport Office on 01704 889455 if you wish to arrange a viewing appointment for this property or require further information.

- Three bedroom
- Semi detached
- Living room with bay window
- Spacious kitchen diner with double doors leading to rear
- Bathroom & WC
- Driveway parking
- Rear decked entertainment area
- Expansive rear sun catching garden
- In the heart of Ainsdale Village
- Viewings available upon request



3



1

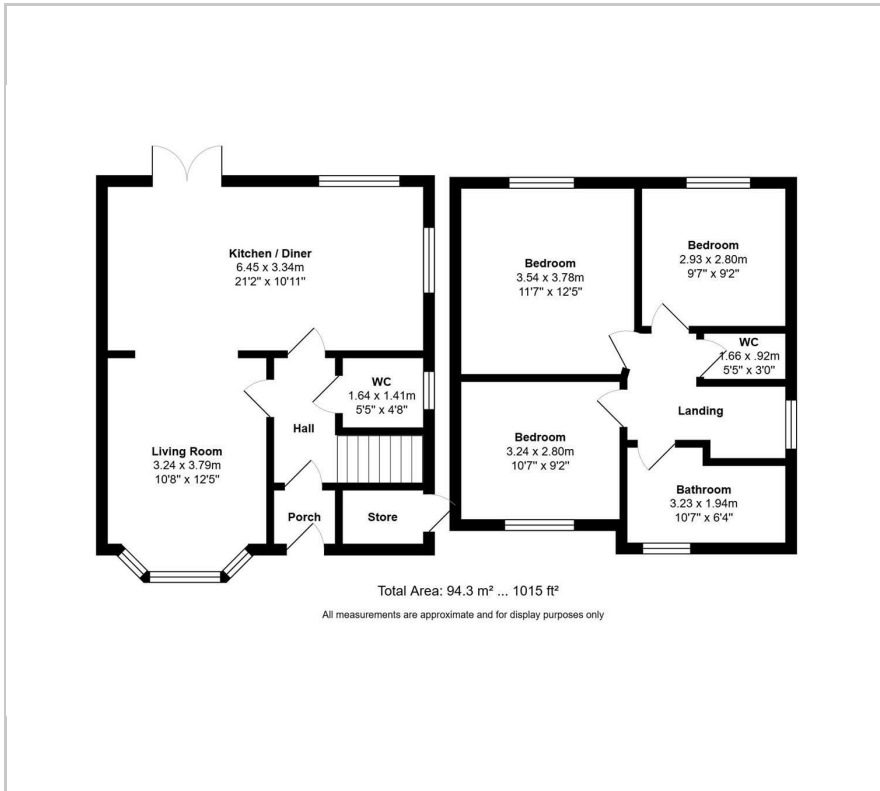


1



D

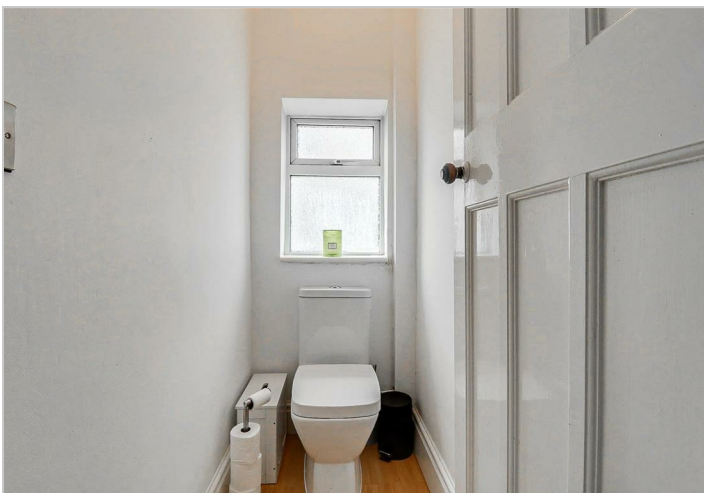
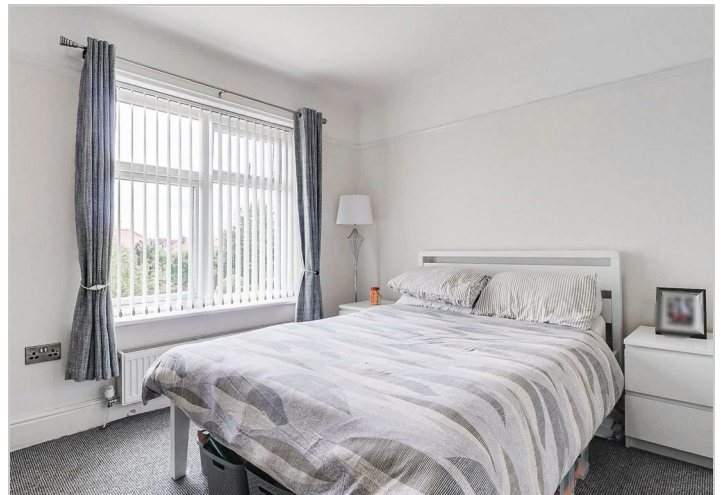
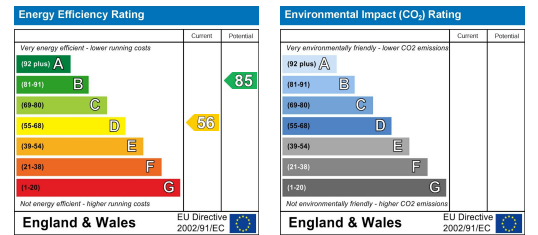
Floor Plan



Area Map



Energy Efficiency Graph



These particulars, whilst believed to be accurate are set out as a general outline only for guidance and do not constitute any part of an offer or contract. Intending purchasers should not rely on them as statements of representation of fact, but must satisfy themselves by inspection or otherwise as to their accuracy. No person in this firm's employment has the authority to make or give any representation or warranty in respect of the property.