



FLEXIAGENT

Market Leading, Independent Estate Agents



Grove Street

Southport, PR8 5AY

Offers In Excess Of £160,000

Flexi Agent are pleased to present this three bedroom mid terrace property to the open sales market. The property is in an excellent location, being situated within walking distance of Birkdale village with a plethora of amenities on offer & short distance into Southport town centre. An ideal first time / investment purchase.

The property briefly comprises of; spacious lounge, WC, nicely presented open plan kitchen diner.

The first floor briefly comprises of; three bedrooms & three piece bathroom.

Externally the property offers driveway parking & low maintenance garden to the front, to the rear offers private courtyard.

Viewings available upon request.
Property has potential for high rental return.

Freehold
Council tax band: B
EPC: C

Viewing

Please contact our Flexi Agent Southport Office on 01704 889455 if you wish to arrange a viewing appointment for this property or require further information.

- Three bedroom
- Mid terraced
- Spacious lounge
- Open plan kitchen diner
- Downstairs WC
- Three piece bathroom
- Walking distance of Birkdale village
- Driveway parking
- Private rear courtyard
- Viewings available upon request



3



1

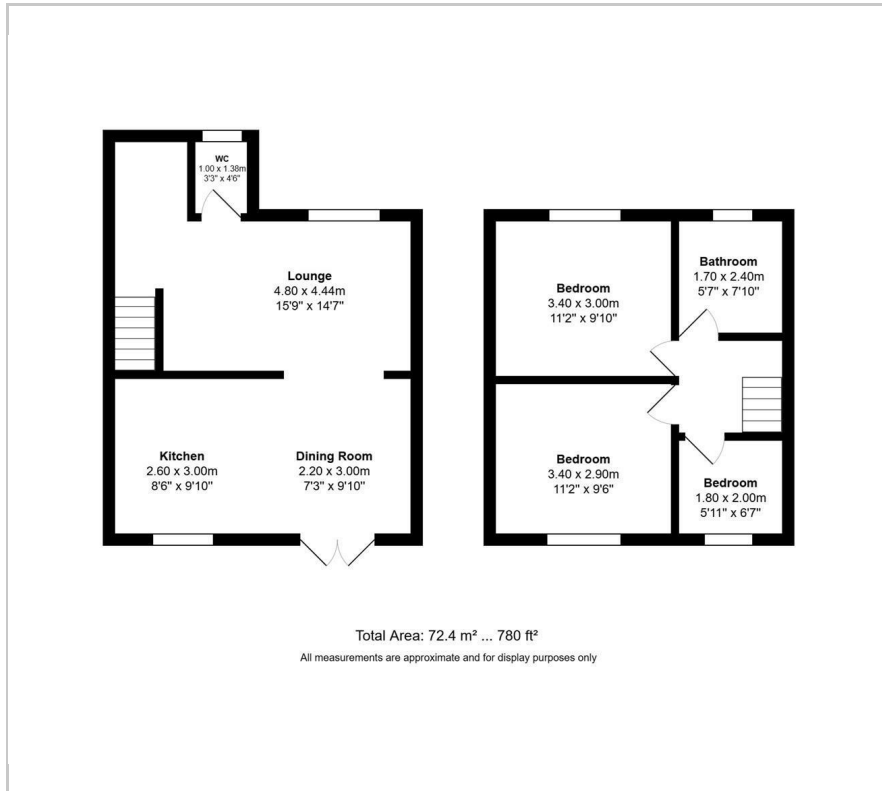


1



C

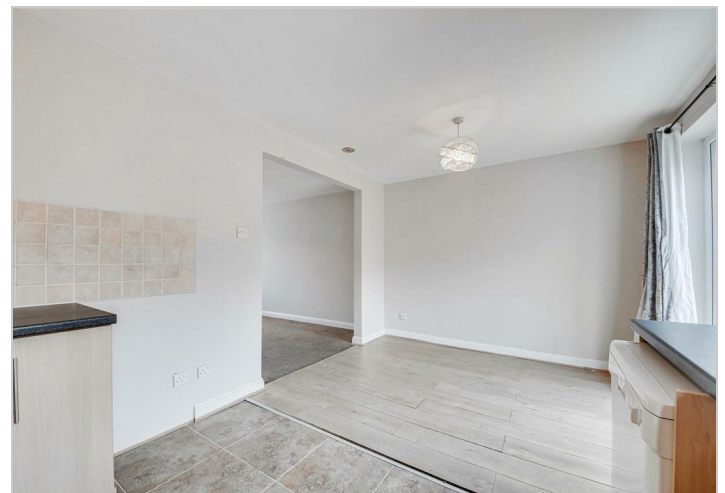
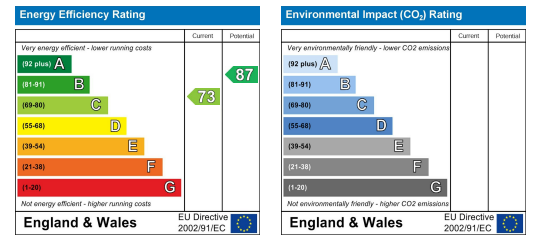
Floor Plan



Area Map



Energy Efficiency Graph



These particulars, whilst believed to be accurate are set out as a general outline only for guidance and do not constitute any part of an offer or contract. Intending purchasers should not rely on them as statements of representation of fact, but must satisfy themselves by inspection or otherwise as to their accuracy. No person in this firm's employment has the authority to make or give any representation or warranty in respect of the property.