



FLEXIAGENT

Market Leading, Independent Estate Agents



Westcliffe Road

Southport, PR8 2BN

£200,000

Flexi-Agent is delighted to welcome to the market this ultra modern basement apartment... this ONE DOUBLE bedroom apartment spans 531 sqft, of fully modernised living accommodation. Situated in a prime central Birkdale location.

The property briefly comprises; own private entrance, leading to a jack and jill bathroom, spacious double bedroom with wardrobe, a beautiful modern kitchen with integrated appliances, large lounge area leading to a private terrace.

Externally, ample driveway parking is available to the front and access to a beautifully maintained front garden areas.

- This apartment has its own title and utility services.
- Includes all fixtures fittings and furnishings
- EPC: C
- Council tax: Rated as holiday lets with small business rate relief

Available for purchase with NO ONWARDS CHAIN!

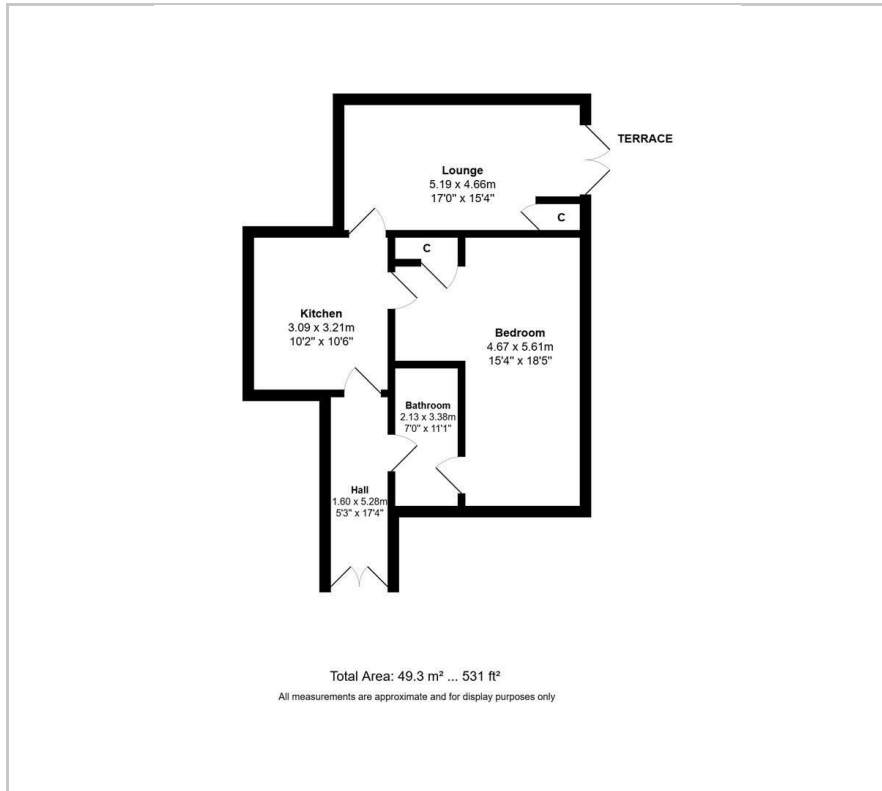
Viewing

Please contact our Flexi Agent Southport Office on 01704 889455 if you wish to arrange a viewing appointment for this property or require further information.

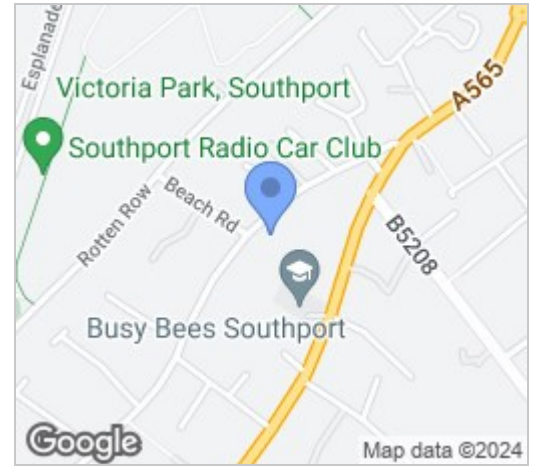
- One double bedroom
- Basement apartment
- Own private entrance
- Jack and jill bathroom
- Beautiful modern kitchen with integrated appliances
- Large lounge area
- NO CHAIN
- Ample driveway parking & Private terrace
- Beautifully maintained front garden areas
- Viewings available upon request



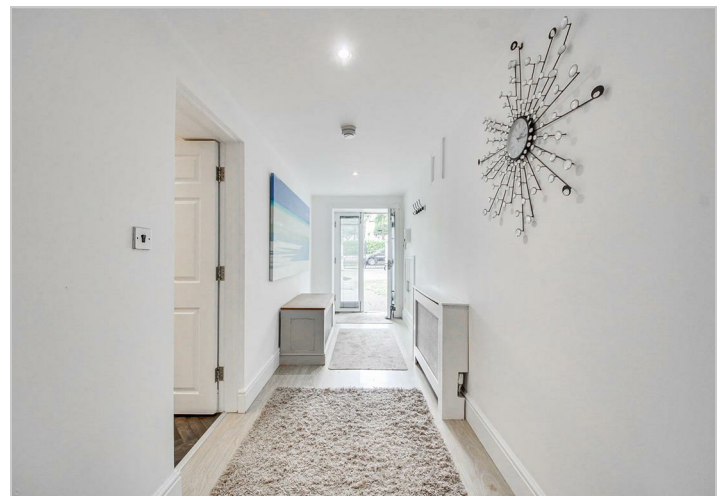
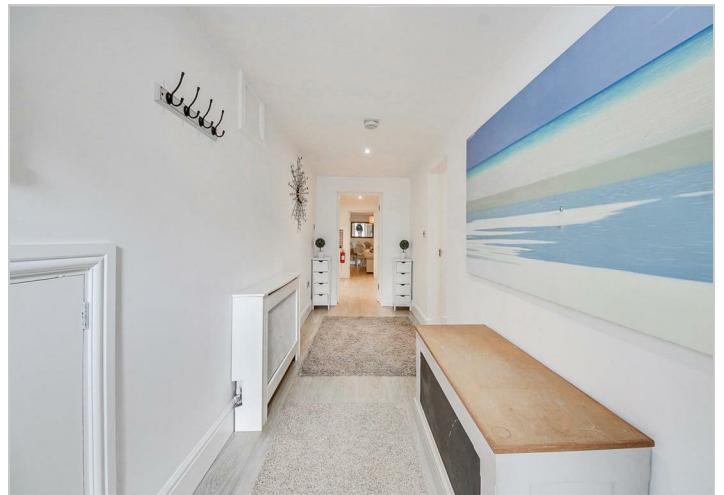
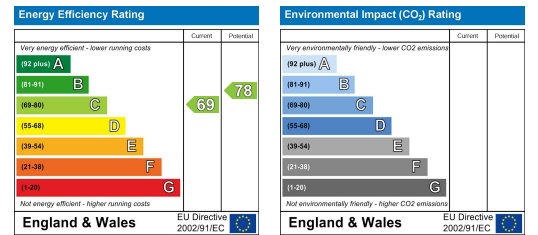
Floor Plan



Area Map



Energy Efficiency Graph



These particulars, whilst believed to be accurate are set out as a general outline only for guidance and do not constitute any part of an offer or contract. Intending purchasers should not rely on them as statements of representation of fact, but must satisfy themselves by inspection or otherwise as to their accuracy. No person in this firm's employment has the authority to make or give any representation or warranty in respect of the property.