



# FLEXIAGENT

Market Leading, Independent Estate Agents



## Royal Terrace

Southport, PR8 1QW

**£675 Per Month**

Flexi-Agent is delighted to offer this one-bedroom flat to the rental market. Located a short walk from Southport town centre, it is surrounded by a wealth of amenities and is a short walk from local schools, transport links, and Southport seafront.

The property briefly comprises: Entrance hallway, spacious bedroom/living space, kitchen and shower room.

Viewings are available on request.

Council Tax Band: A  
Deposit £807.69

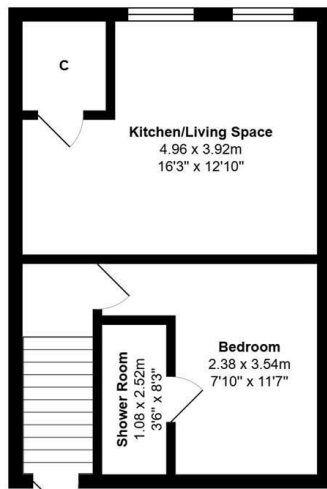
### Viewing

Please contact our Flexi Agent Southport Office on 01704 889455 if you wish to arrange a viewing appointment for this property or require further information.

- One bedroom flat
- Town centre location
- Great transport links
- Close to amenities
- Sought after location
- Walking distance to Southport sea front
- Council tax bad A
- Deposit £778.84
- Available immediately
- Viewings are available on request



## Floor Plan



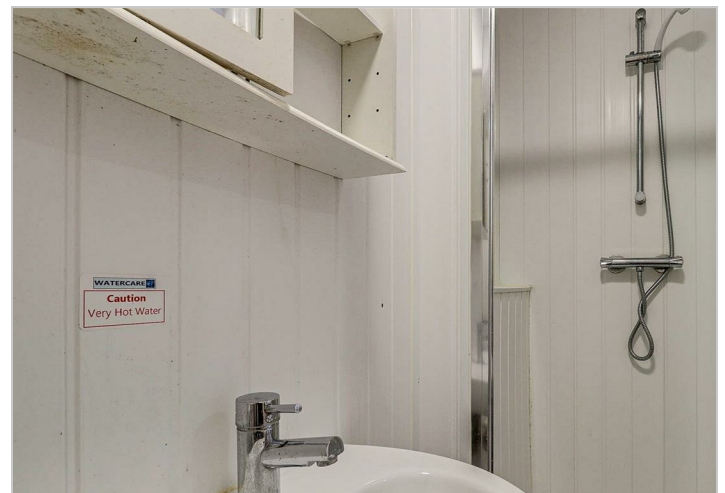
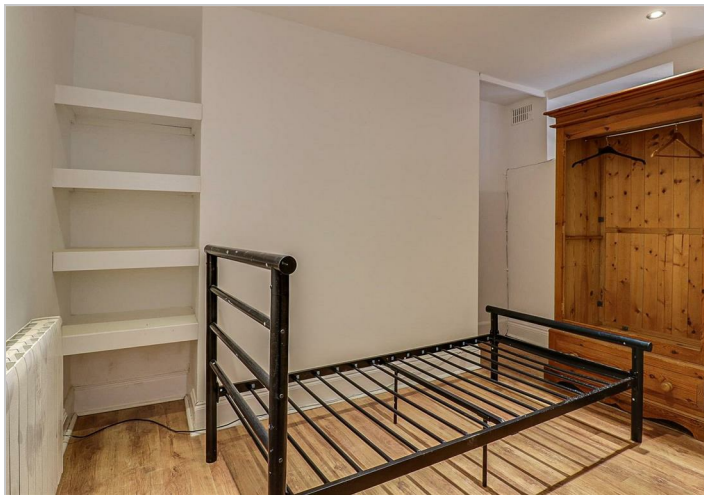
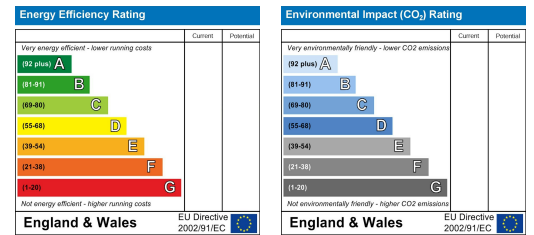
Total Area: 37.8 m<sup>2</sup> ... 407 ft<sup>2</sup>

All measurements are approximate and for display purposes only

## Area Map



## Energy Efficiency Graph



These particulars, whilst believed to be accurate are set out as a general outline only for guidance and do not constitute any part of an offer or contract. Intending purchasers should not rely on them as statements of representation of fact, but must satisfy themselves by inspection or otherwise as to their accuracy. No person in this firm's employment has the authority to make or give any representation or warranty in respect of the property.