



FLEXIAGENT

Market Leading, Independent Estate Agents



Lytham Road Southport, PR9 9TX

Offers In The Region Of £230,000

Flexi-Agent are delighted to present this three bedroom semi detached house to the open market. Located close to the charming residential area of Churchtown, it's a short distance to Churchtown Village & the Botanic Gardens, close to excellent schools, has easy access in and out of Southport Town Centre via the A565 with a brilliant bus route service, including many shops, restaurants and bars. Available for purchase with NO ONWARDS CHAIN.

The property briefly comprises of, two spacious lounges front & rear, nicely presented modern kitchen diner & storage room with double doors leading to rear. WC.

The first floor briefly comprises of, three bedrooms & four piece bathroom.

Externally the property briefly comprises of, private driveway parking to the front & astro turf, to the rear offers courtyard seating area & a large sun catching garden.

Viewings available upon request.

NO CHAIN
Council tax band: B
EPC: C
Freehold

- Three bedroom
- Semi detached
- Two reception rooms
- Nicely presented & modern kitchen
- Four piece bathroom & WC
- Driveway parking
- Large sun catching garden to the rear
- NO CHAIN
- Short distance to public transport links via A565
- Viewings available upon request

Viewing

Please contact our Flexi Agent Southport Office on 01704 889455 if you wish to arrange a viewing appointment for this property or require further information.



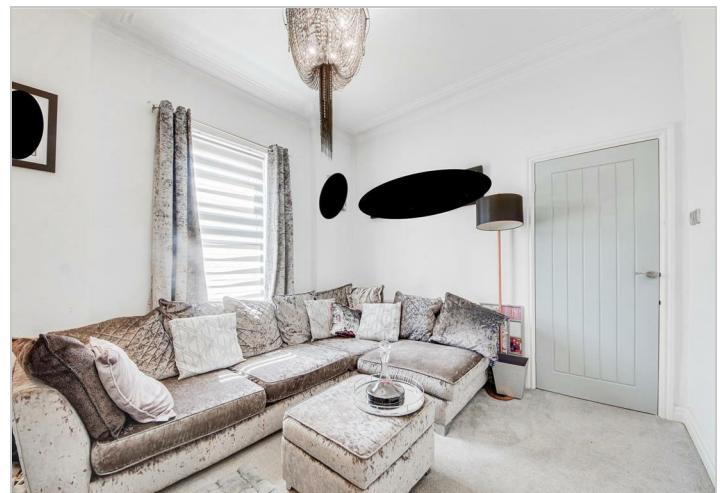
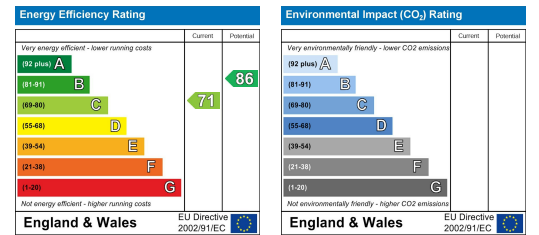
Floor Plan



Area Map



Energy Efficiency Graph



These particulars, whilst believed to be accurate are set out as a general outline only for guidance and do not constitute any part of an offer or contract. Intending purchasers should not rely on them as statements of representation of fact, but must satisfy themselves by inspection or otherwise as to their accuracy. No person in this firm's employment has the authority to make or give any representation or warranty in respect of the property.