



FLEXIAGENT

Market Leading, Independent Estate Agents



Promenade

Southport, PR9 0DS

Offers In Excess Of £105,000

Flexi-Agent is delighted to present this two bedroom ground floor apartment to the open sales market. Located a short distance from Southport Town Centre, Ocean plaza leisure park & Marine lake, as well as offering great public transport links.

The property briefly comprises of private communal entrance & private rear access to the building. Spacious hallway, bay window living room with plenty of natural light, modern kitchen, two bedrooms with master featuring built in wardrobes, three piece bathroom. The apartment also offers secure basement storage.

Externally the property offers front paved garden & private gated parking to the rear as well as on street parking.

- Property can be sublet / used as an Airbnb.

Viewings available upon request.

Leasehold
Service charge £120 per month
Council tax band: B
EPC E

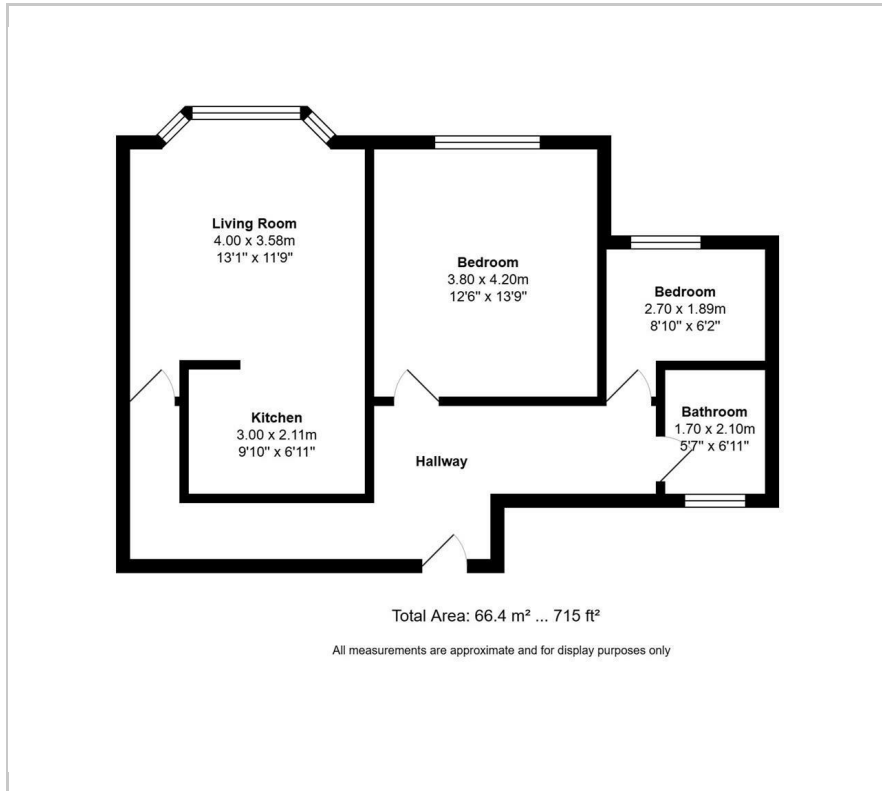
Viewing

Please contact our Flexi Agent Southport Office on 01704 889455 if you wish to arrange a viewing appointment for this property or require further information.

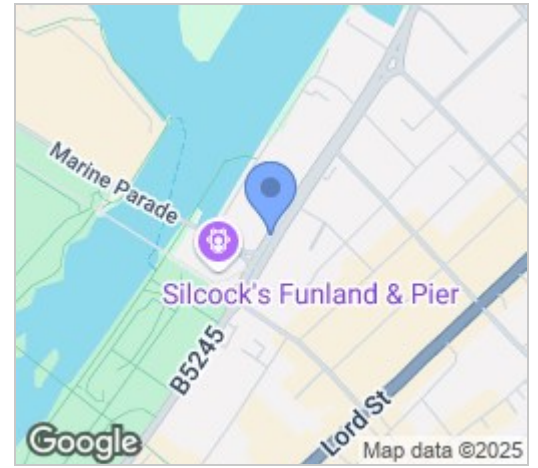
- Two bedroom
- Ground floor apartment
- Bay window living room
- Modern kitchen
- Three piece bathroom
- Close to Southport town centre
- Front paved garden
- Private gated parking
- Secure basement storage
- Viewings available upon request



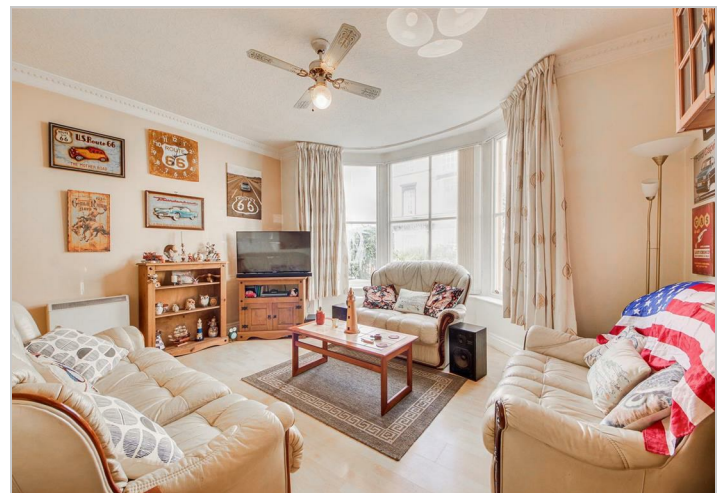
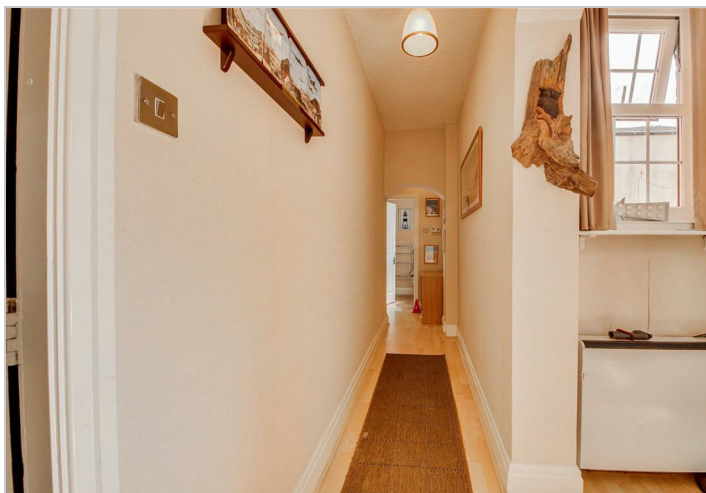
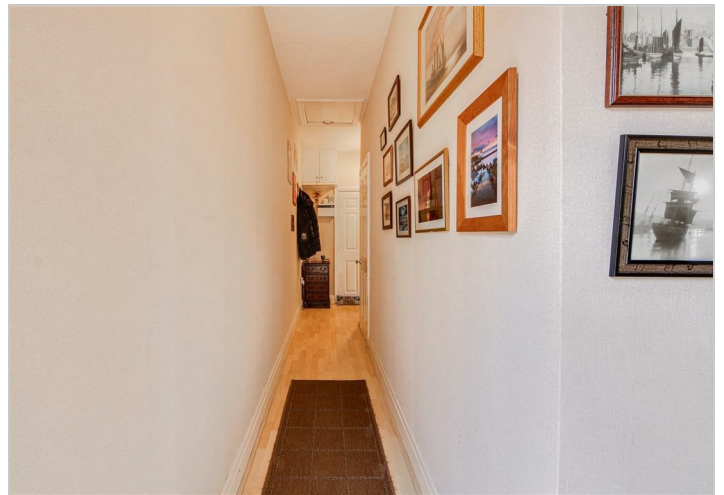
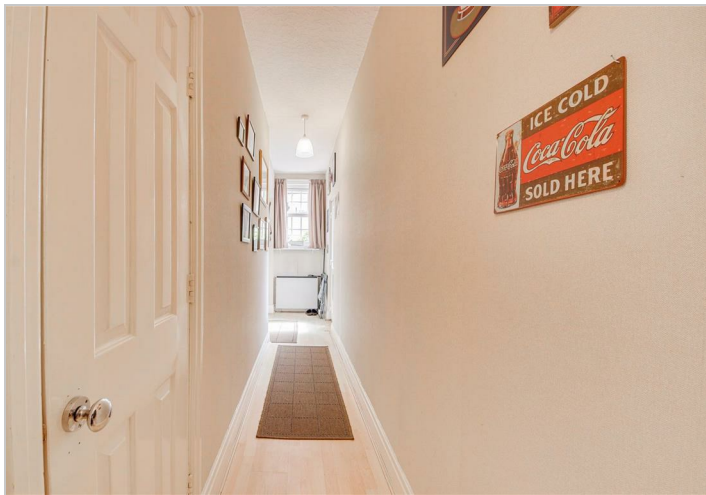
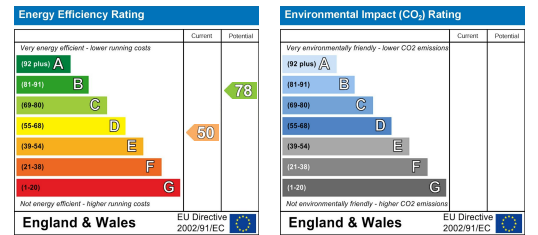
Floor Plan



Area Map



Energy Efficiency Graph



These particulars, whilst believed to be accurate are set out as a general outline only for guidance and do not constitute any part of an offer or contract. Intending purchasers should not rely on them as statements of representation of fact, but must satisfy themselves by inspection or otherwise as to their accuracy. No person in this firm's employment has the authority to make or give any representation or warranty in respect of the property.