



FLEXIAGENT

Market Leading, Independent Estate Agents



Grange Road Southport, PR9 9AD

Offers In The Region Of £375,000

Flexi-Agent are delighted to present this four bedroom semi detached house to the open market. Located short distance to the beautiful Hesketh Park, Southport Town Centre, Meols Cop train station & surrounded by a wealth of local amenities.

This property briefly comprises of; entrance hall, bay window lounge, spacious living room, modern galley kitchen / breakfast room with sliding doors to rear, WC cloakroom.

The first floor briefly comprises of; four bedrooms with master featuring bay window, four piece family bathroom.

Externally the property offers paved driveway parking, to the rear offers paved seating / entertainment area & sun catching garden.

Viewing is available immediately by appointment.

Council tax band: D
Freehold

Viewing

Please contact our Flexi Agent Southport Office on 01704 889455 if you wish to arrange a viewing appointment for this property or require further information.

- Four bedroom
- Semi detached
- Bay window lounge
- Spacious living room
- Modern galley kitchen / breakfast room
- WC cloakroom
- Four piece bathroom
- Driveway parking
- Sun catching rear garden
- Viewings available upon request



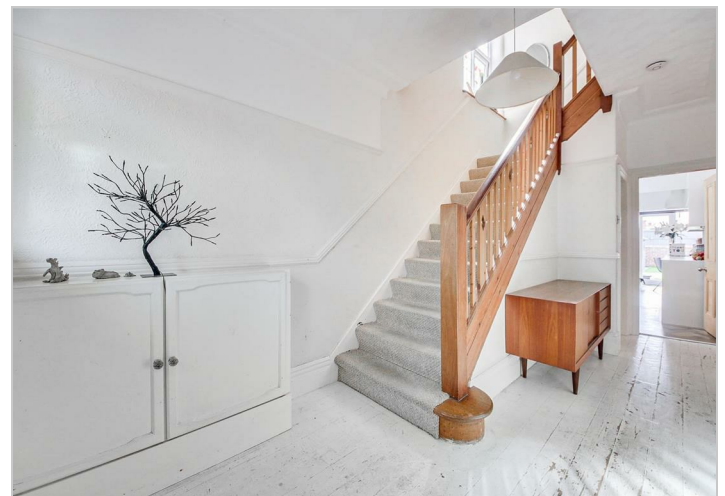
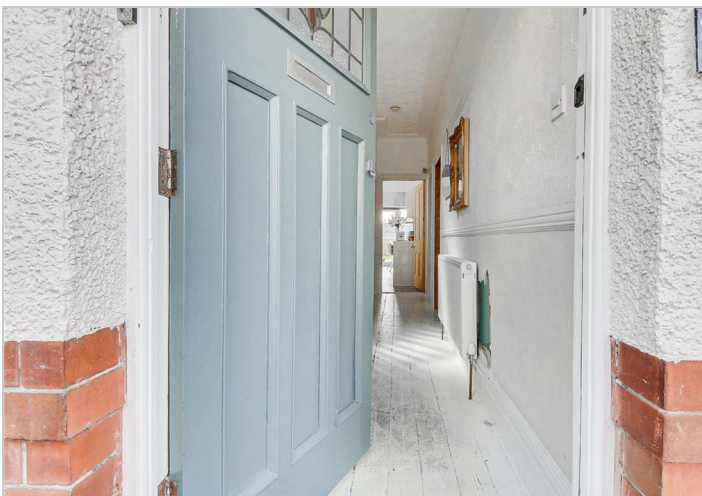
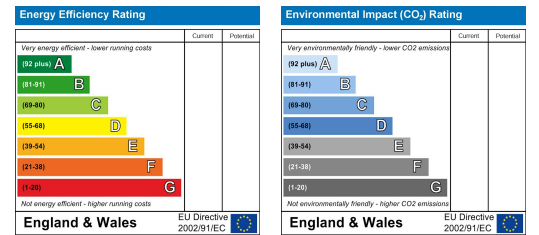
Floor Plan



Area Map



Energy Efficiency Graph



These particulars, whilst believed to be accurate are set out as a general outline only for guidance and do not constitute any part of an offer or contract. Intending purchasers should not rely on them as statements of representation of fact, but must satisfy themselves by inspection or otherwise as to their accuracy. No person in this firm's employment has the authority to make or give any representation or warranty in respect of the property.