



FLEXIAGENT

Market Leading, Independent Estate Agents



Albert Road

Southport, PR9 0LE

Offers In Excess Of £110,000

Flexi-Agent are delighted to present this one bedroom basement apartment to the open market. Located in Southport, in a prime central position, it is moments away from the famous Lord Street with its array of shops, restaurants and bars as well as excellent transport links. The property has been fully renovated throughout, benefits from new stylish fixtures & fittings and is available for purchase with NO ONWARD CHAIN.

The property briefly comprises; a fantastic open plan kitchen diner which is newly installed and complete with integrated appliances, a double bedroom, hallway and a high specification three piece family bathroom.

Externally, the property offers one allocated parking space and a shared garden.

Early inspection of this property is strongly recommended to fully appreciate the accommodation on offer.

RENTAL POTENTIAL £850PCM

Leasehold - 999 years
Service Charge - £900 per annum

Viewing is available immediately by appointment.

Viewing

Please contact our Flexi Agent Southport Office on 01704 889455 if you wish to arrange a viewing appointment for this property or require further information.

- Basement apartment
- One DOUBLE bedroom
- High specification throughout
- Open plan living kitchen diner
- Ideal first time/investment purchase
- Newly installed bathroom
- Newly installed kitchen
- One allocated parking space
- NO CHAIN
- Leasehold



1



1

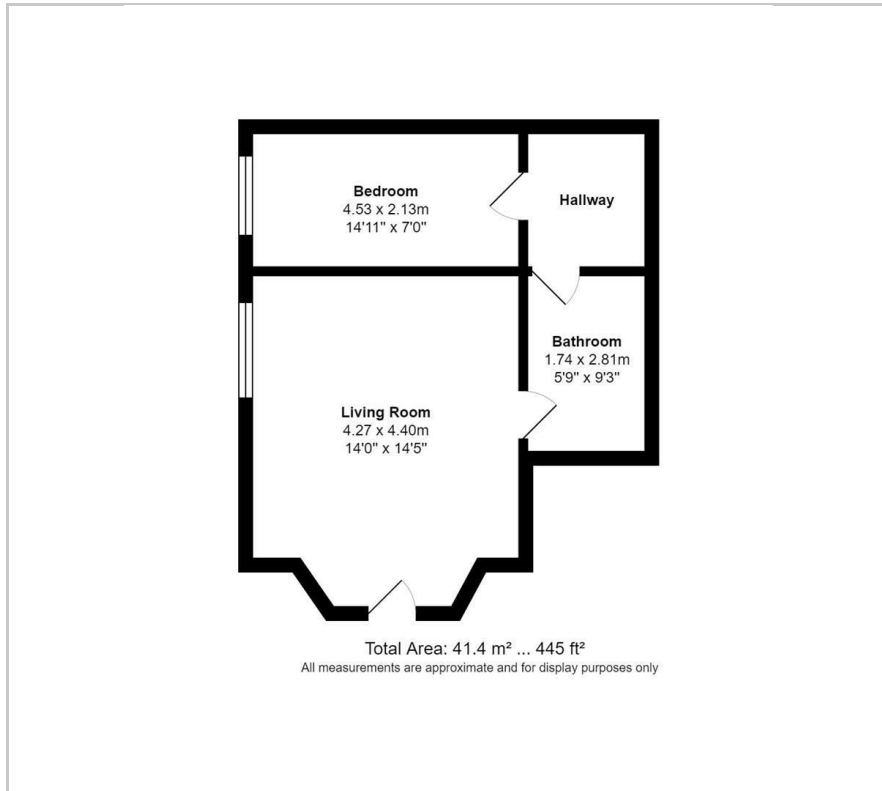


1



D

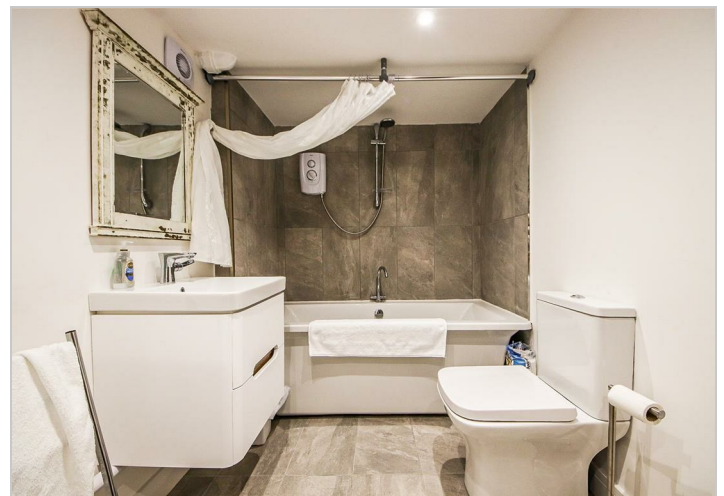
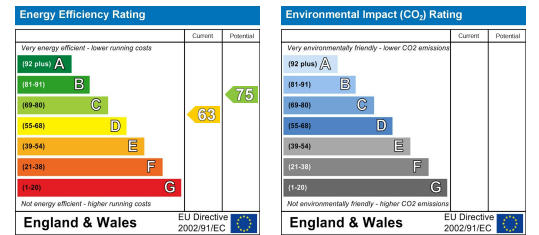
Floor Plan



Area Map



Energy Efficiency Graph



These particulars, whilst believed to be accurate are set out as a general outline only for guidance and do not constitute any part of an offer or contract. Intending purchasers should not rely on them as statements of representation of fact, but must satisfy themselves by inspection or otherwise as to their accuracy. No person in this firm's employment has the authority to make or give any representation or warranty in respect of the property.