



FLEXIAGENT

Market Leading, Independent Estate Agents



Madingley Court, Cambridge Road

Southport, PR9 9SG

Offers In Excess Of £70,000

Flexi-Agent are delighted to present this retirement property over 60's second floor apartment to the open market. Located a short walk to Hesketh Golf Club & near the sought after residential area of Churchtown, it's short drive to Churchtown Village and the Botanic Gardens, close to excellent schools, has easy access in and out of Southport Town Centre via the A565 with a brilliant bus route service. The location is also surrounded by a wealth of local amenities including many shops, restaurants and bars.

The property briefly comprises of, one double bedroom, three piece bathroom, spacious lounge with a Juliet balcony & user friendly kitchen.

Externally the property offers allocated parking & communal garden grounds.

Leasehold
EPC: B
Council tax band: B
Retirement property

Viewings available on request.

Viewing

Please contact our Flexi Agent Southport Office on 01704 889455 if you wish to arrange a viewing appointment for this property or require further information.

- One double bedroom
- Second floor apartment
- Spacious lounge
- Juliet balcony
- User friendly kitchen
- Three piece bathroom
- Allocated resident parking
- Communal garden grounds
- Great transport links via A565
- Viewings available upon request



1



1

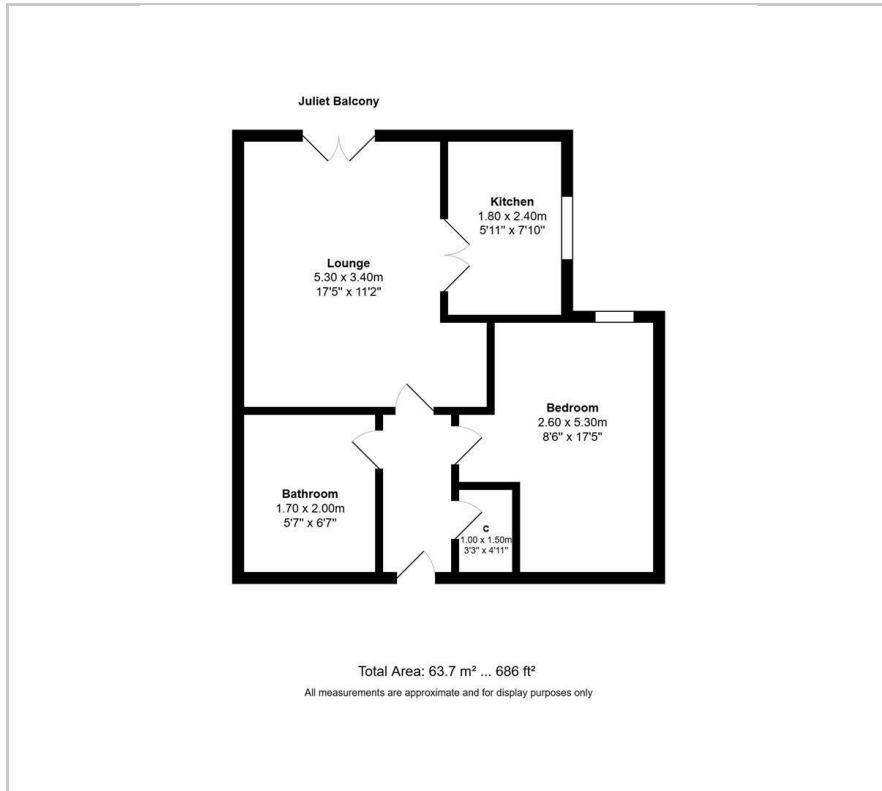


1



B

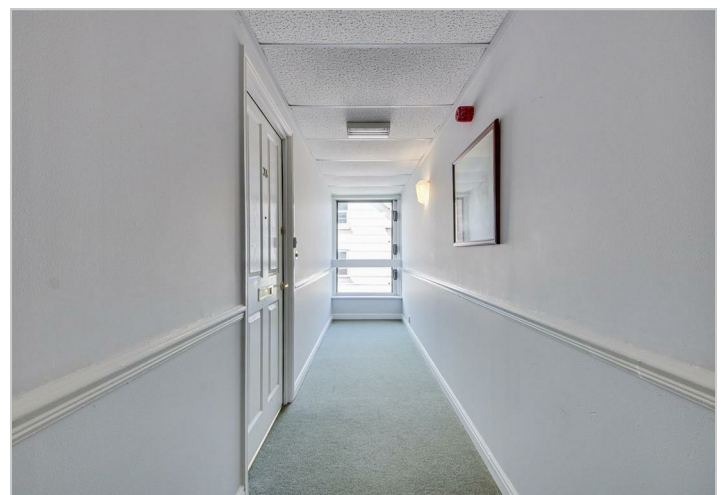
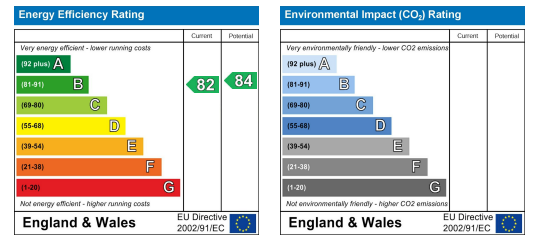
Floor Plan



Area Map



Energy Efficiency Graph



These particulars, whilst believed to be accurate are set out as a general outline only for guidance and do not constitute any part of an offer or contract. Intending purchasers should not rely on them as statements of representation of fact, but must satisfy themselves by inspection or otherwise as to their accuracy. No person in this firms employment has the authority to make or give any representation or warranty in respect of the property.