



## Hargreaves Street

Southport, PR8 6SY

**£950 Per Month**

Flexi-Agent are delighted to present this well presented two bedroom, semi-detached property to the rental market. Located just outside Southport Town Centre, is surrounded by a wealth of local amenities including shops restaurants and bars, has easy access to many transport links and is close to many award-winning schools.

The property briefly comprises: Spacious living room, dining room, a modern kitchen and a three piece family bathroom. Newly decorated and with new carpets throughout.

To the first floor two well proportioned double bedrooms.

Externally the property benefits from driveway parking and a sun catching rear garden.

Deposit £1269.23  
Council Tax Band A

### Viewing

Please contact our Flexi-Agent Southport Lettings Office on 01704 889455 if you wish to arrange a viewing appointment for this property or require further information.

- Two bedrooms
- Newly decorated
- New carpets throughout
- Family Bathroom
- Two reception rooms
- Driveway parking
- Sun catching garden
- Sought after location
- Council Tax Band A
- Deposit £1269.23



2



1

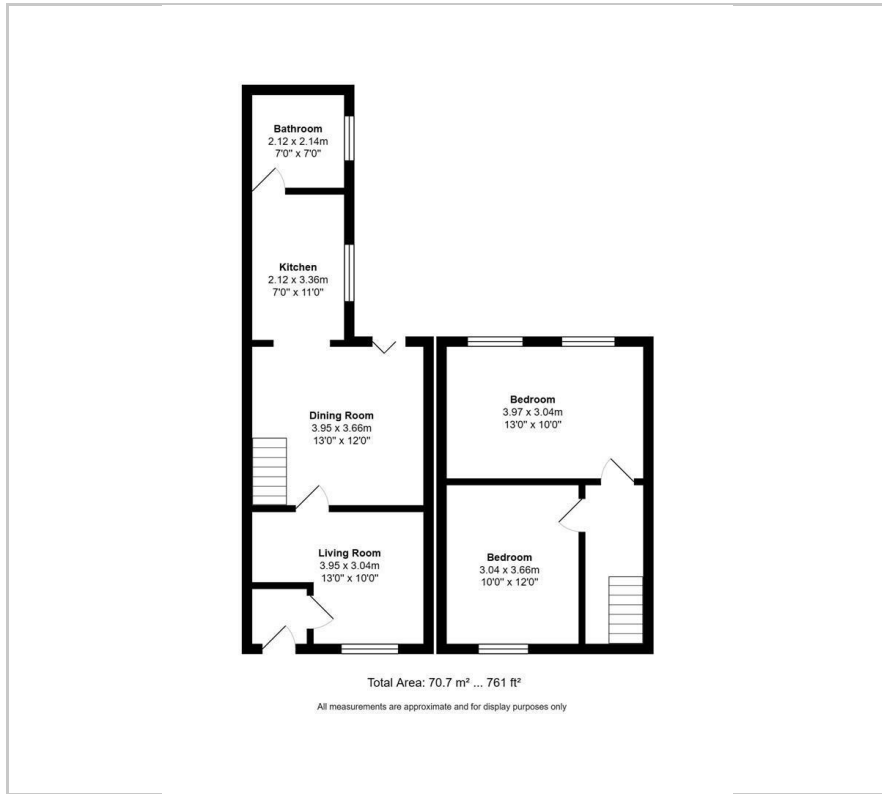


2





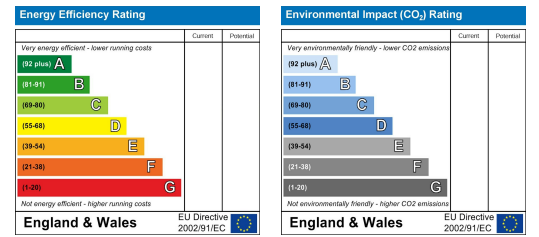
## Floor Plan



## Area Map



## Energy Efficiency Graph



These particulars, whilst believed to be accurate are set out as a general outline only for guidance and do not constitute any part of an offer or contract. Intending purchasers should not rely on them as statements of representation of fact, but must satisfy themselves by inspection or otherwise as to their accuracy. No person in this firm's employment has the authority to make or give any representation or warranty in respect of the property.