



FLEXIAGENT

Market Leading, Independent Estate Agents



Saxon Road Southport, PR8 2AX

Offers In Excess Of £850,000

OPEN DAY SUNDAY 19TH MAY FROM 10AM ONWARDS - PLEASE CONTACT THE OFFICE TO ARRANGE YOUR INDIVIDUAL APPOINTMENT SLOT

Flexi-Agent are delighted to present this breath-taking semi detached house to the open market. Located within walking distance to Birkdale village, it is surrounded by a wealth of local amenities, cafes, bars & restaurants, and is a short walk from local transport links giving easy access to Southport town centre & Royal Birkdale and Hillside Golf Links.

The property features a stunning Antico flooring throughout the property, with chandelier lighting and briefly comprises of on ground floor; large bay window lounge featuring original fireplace consisting of a Log burner and restored coving, spacious bay window reception room, WC, high end luxury kitchen featuring a central island with integrated built in appliances. Induction hob, hot water tap, fully tiled floor leading to a stunning multi level patio and entertainment area flowing into the expansive garden.

First floor briefly comprises of; beautifully presented large family bathroom with stand alone bath, four bedrooms feature antico flooring & functional high end fitted wardrobe, master bedroom features fully fitted wardrobes, feature lighting, including a high spec bathroom with double open fully tiled showering area.

Externally to the front offers a gated front with large driveway / parking area & double gated leading to rear, sun catching front garden, to the rear offers a porcelain tiled seating / entertainment area followed with a large sun catching garden

- Four bedroom semi detached circa 2959 sqft
- Stunning Antico flooring throughout the property
- Large bay window lounge featuring original fireplace consisting of a Log burner and restored coving
- High end luxury kitchen featuring a central island with integrated built in appliances
- Spacious Reception room
- Large family bathroom with stand alone bath
- Master bedroom with high spec ensuite
- Front offers a gated entrance with large driveway / parking area
- Porcelain tiled seating / entertainment area to the rear followed with a large sun catching garden area
- Viewings available upon request

Viewing

Please contact our Flexi Agent Southport Office on 01704 889455 if you wish to arrange a viewing appointment for this property or require further information.



4



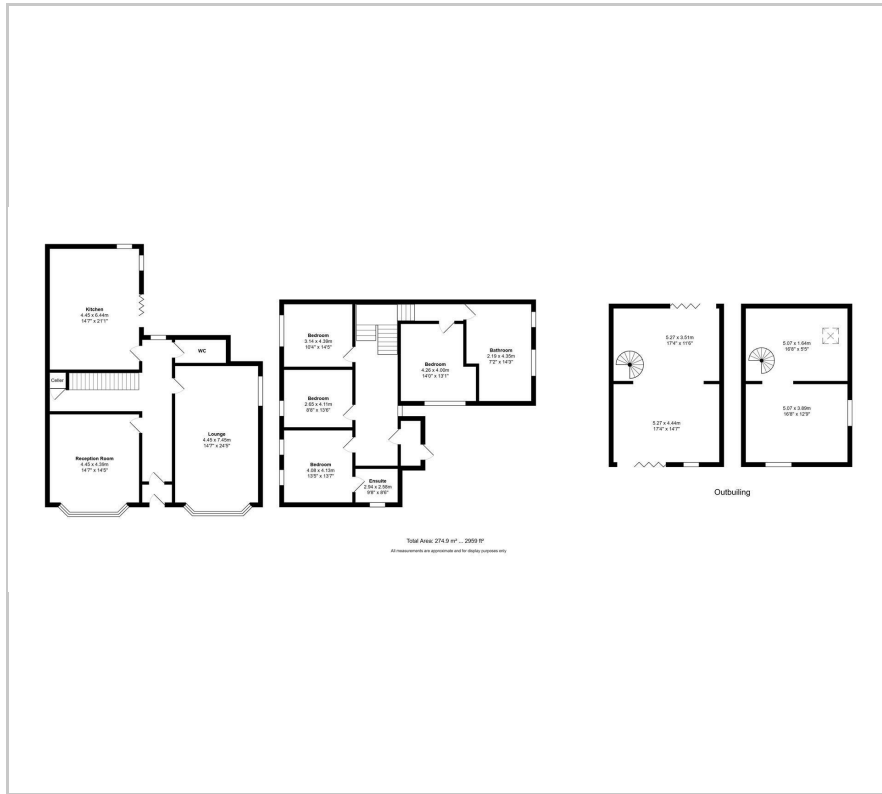
2



2



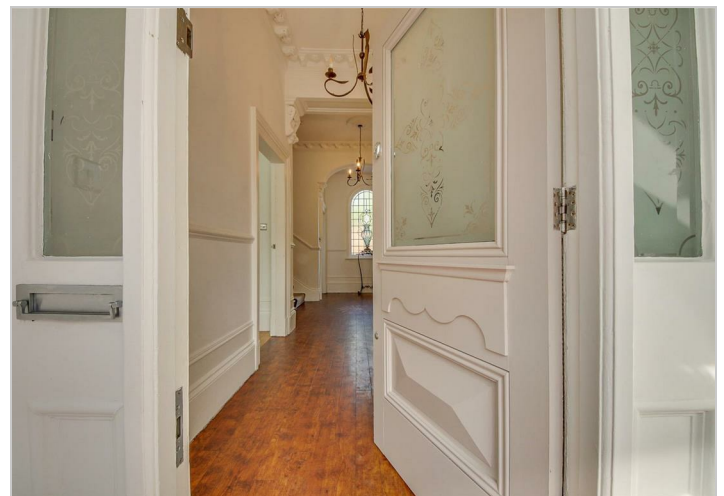
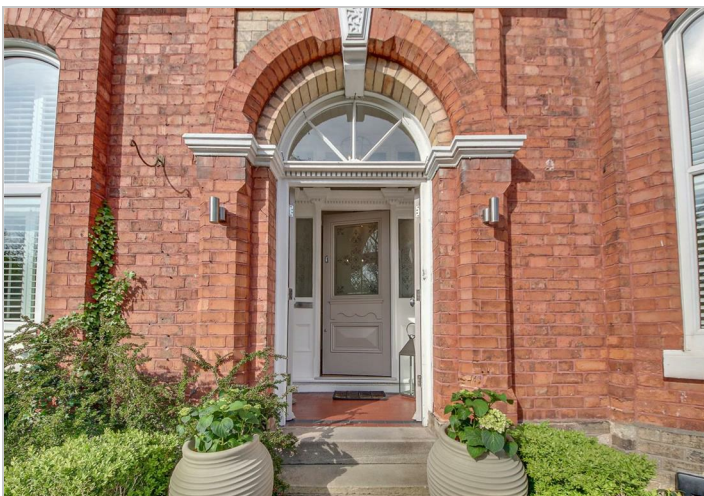
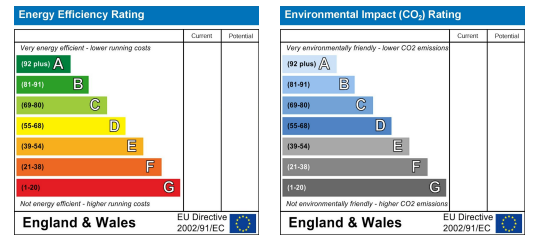
Floor Plan



Area Map



Energy Efficiency Graph



These particulars, whilst believed to be accurate are set out as a general outline only for guidance and do not constitute any part of an offer or contract. Intending purchasers should not rely on them as statements of representation of fact, but must satisfy themselves by inspection or otherwise as to their accuracy. No person in this firm's employment has the authority to make or give any representation or warranty in respect of the property.