



FLEXIAGENT

Market Leading, Independent Estate Agents



Dinorwic Road

Southport, PR8 4DL

Offers In Excess Of £290,000

Flexi-Agent are delighted to present this extended four bedroom semi-detached period property to the open market. The property has been thoughtfully improved to a high specification and would make an ideal established family home! Located in the sought after area of Birkdale, within walking distance of the vibrant Birkdale Village with its plethora of shops, restaurants and bars, it is surrounded by a wealth of local amenities and is a stone's throw from excellent local transport links and great local schools.

The property briefly comprises: Porch, entrance hallway, lounge with feature bay window and French doors opening into the spacious dining room, a good size fitted kitchen with plenty of storage cupboards, useful utility room with WC off it and access to the sun room with its views over the garden.

To the first floor, there are four bedrooms, two of which are DOUBLE rooms and a stylish three piece family bathroom.

Externally, the property has a block paved driveway providing ample off-road parking to the front. Side access leads round to the enclosed sun-catching rear garden with paved patio, lawned area and well-established borders.

Freehold
Council tax band C

Viewings available upon request.

Viewing

Please contact our Flexi Agent Southport Office on 01704 889455 if you wish to arrange a viewing appointment for this property or require further information.

- Four bedrooms
- Extended semi-detached traditional home
- Period property
- Two reception rooms
- Utility room
- Sought after Birkdale location
- Sun room
- Off-street parking
- Improved to a high specification
- Sun-catching rear garden



4



1



2



D

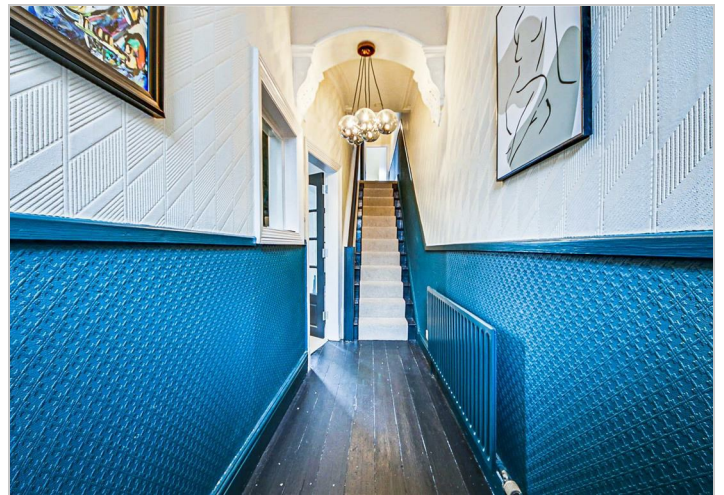
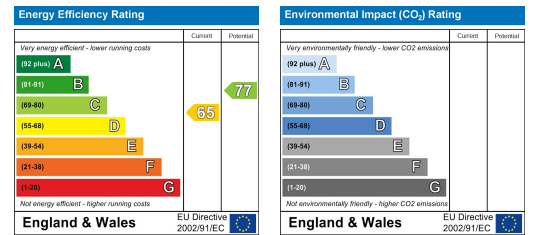
Floor Plan



Area Map



Energy Efficiency Graph



These particulars, whilst believed to be accurate are set out as a general outline only for guidance and do not constitute any part of an offer or contract. Intending purchasers should not rely on them as statements of representation of fact, but must satisfy themselves by inspection or otherwise as to their accuracy. No person in this firm's employment has the authority to make or give any representation or warranty in respect of the property.