



FLEXIAGENT

Market Leading, Independent Estate Agents



Park Road

Southport, PR9 9JL

Offers In Excess Of £150,000

Flexi-Agent are delighted to present this stunning two bedroom first floor apartment to the open market. Located just off the Promenade in Southport Town Centre, is a short walk to the beautiful Hesketh Park and Marine Lake, surrounded by a wealth of local amenities, including several fantastic restaurants and bars, high-street shops and well-known attractions. This property also benefits from situating on a corner plot with fantastic views of Southport Golf Links.

The property briefly comprises of a welcoming entrance hall, spacious bay window lounge / dining room, fitted kitchen, three piece shower room, main bedroom with built in wardrobe space, storage space.

Externally the property offers off road parking, garage & sun catching garden to the front.

Viewing is available immediately by appointment.

Council tax band: C
EPC B
Leasehold
Service charge £450 per quarter
Ground rent £50 per annum

Viewing

Please contact our Flexi Agent Southport Office on 01704 889455 if you wish to arrange a viewing appointment for this property or require further information.

- Two bedroom apartment
- First floor
- Entrance hall
- Spacious bay window lounge / dining room
- Three piece shower room
- Main bedroom with built in wardrobe space
- Storage space
- Off road parking & garage
- Sun catching garden to the front
- Viewings available upon request



2



1



1



3

B

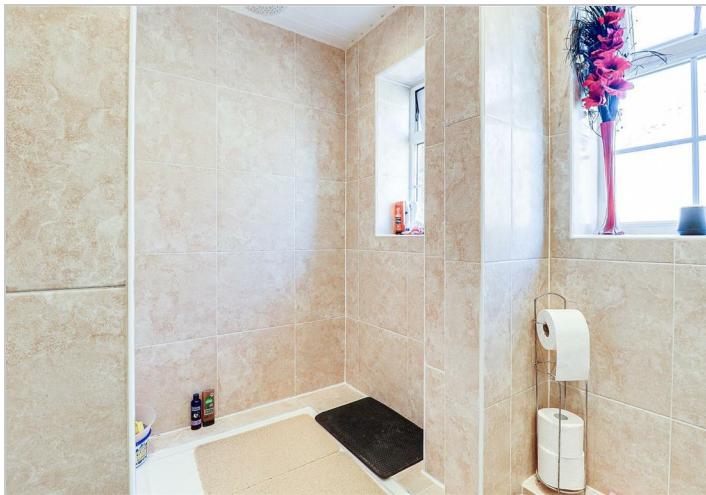
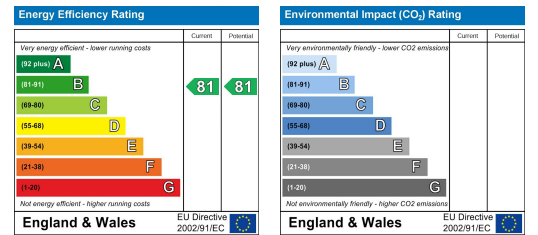
Floor Plan



Area Map



Energy Efficiency Graph



These particulars, whilst believed to be accurate are set out as a general outline only for guidance and do not constitute any part of an offer or contract. Intending purchasers should not rely on them as statements of representation of fact, but must satisfy themselves by inspection or otherwise as to their accuracy. No person in this firm's employment has the authority to make or give any representation or warranty in respect of the property.