



FLEXIAGENT

Market Leading, Independent Estate Agents



Railway Terrace

Southport, PR8 1JL

Offers In Excess Of £135,000

Flexi-Agent are pleased to present this three bedroom semi-detached family home to the open market. Situated in a popular residential location, it is within walking distance of a host of amenities, including shops, schools & transport links.

This great first-time buy and briefly comprises: porch, entrance hall, a living room with plenty of natural light, dining room, shaker kitchen.

To the first floor there are three bedrooms & three piece bathroom.

Externally, the property offers private driveway parking to the front, to the rear offers a rear garden.

Viewings available on request.

Council Tax Band B
Freehold
EPC E

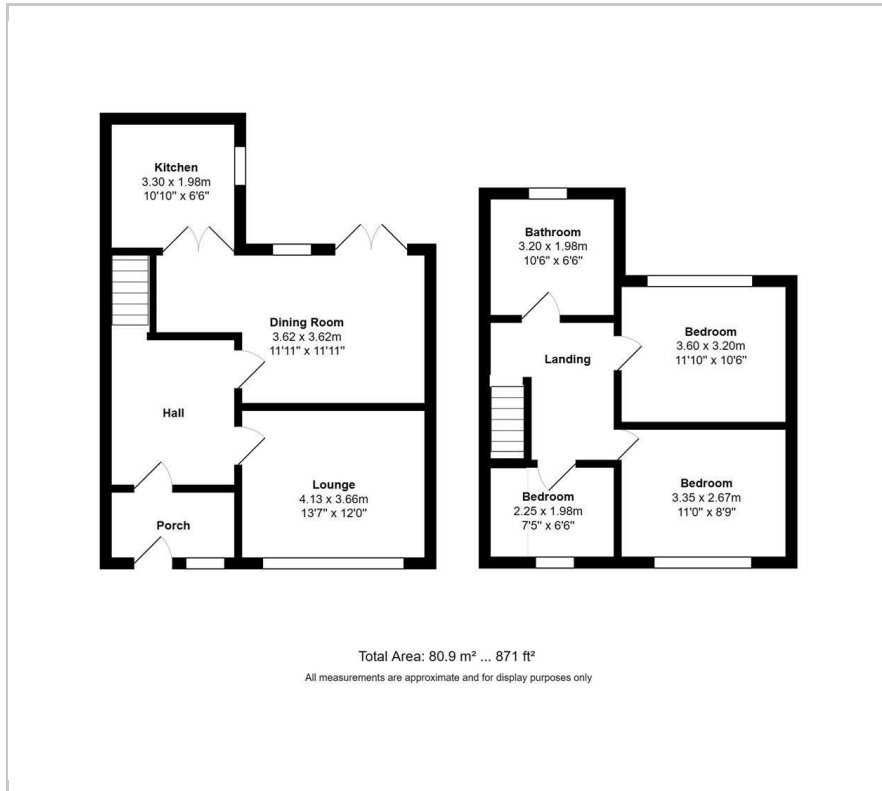
Viewing

Please contact our Flexi Agent Southport Office on 01704 889455 if you wish to arrange a viewing appointment for this property or require further information.

- Three bedroom
- Semi detached
- Great first-time buy
- Living room with plenty of natural light
- Spacious dining room
- Shaker kitchen
- Three piece bathroom
- Private driveway parking to the front
- Rear garden
- Viewings available upon request



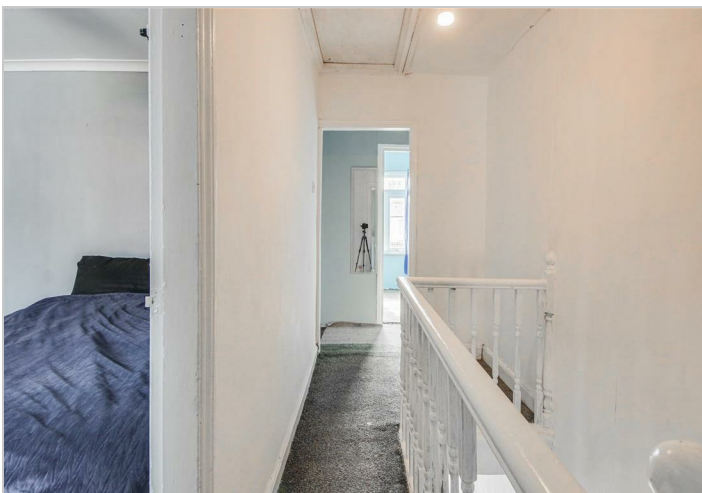
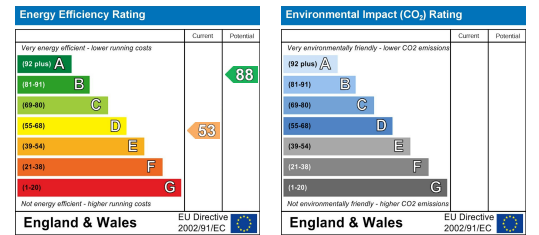
Floor Plan



Area Map



Energy Efficiency Graph



These particulars, whilst believed to be accurate are set out as a general outline only for guidance and do not constitute any part of an offer or contract. Intending purchasers should not rely on them as statements of representation of fact, but must satisfy themselves by inspection or otherwise as to their accuracy. No person in this firm's employment has the authority to make or give any representation or warranty in respect of the property.