



FLEXIAGENT

Market Leading, Independent Estate Agents



Fleetwood Drive

Southport, PR9 8HE

Offers In Excess Of £210,000

Flexi-agent are proud to present this three bedroom, semi-detached house to the open market. Situated in Banks, it is surrounded by beautiful rural views and peaceful countryside walks, the local supermarket and chemist are only a two minute walk via the footpath as well as a local wine bar and coffee shop, great local schools nearby & has easy access into Southport town centre. Advertised with NO ONWARDS CHAIN.

The property briefly comprises: Entrance hallway, a spacious living room, an open plan kitchen/diner with underfloor heating and patio doors leading to the sun catching rear garden.

The first floor consists of three well-proportioned bedrooms with ample storage and a family bathroom.

Externally the property benefits from ample driveway parking and a sun catching rear garden, summer house and a garage with utility area and WC.

Council Tax Band C

- Three bedrooms
- Semi detached house
- Sought after residential location
- Family bathroom
- Sun catching rear garden
- Driveway parking
- Council Tax Band C
- NO CHAIN
- Viewings are available on request
- Utility room

Viewing

Please contact our Flexi Agent Southport Office on 01704 889455 if you wish to arrange a viewing appointment for this property or require further information.



3



1

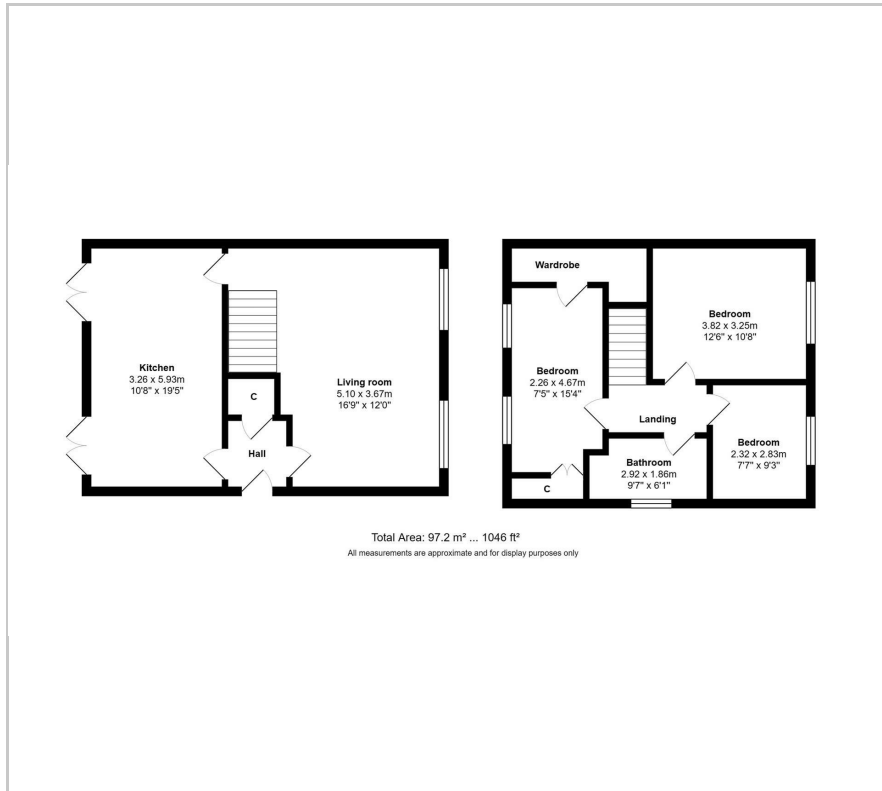


1



D

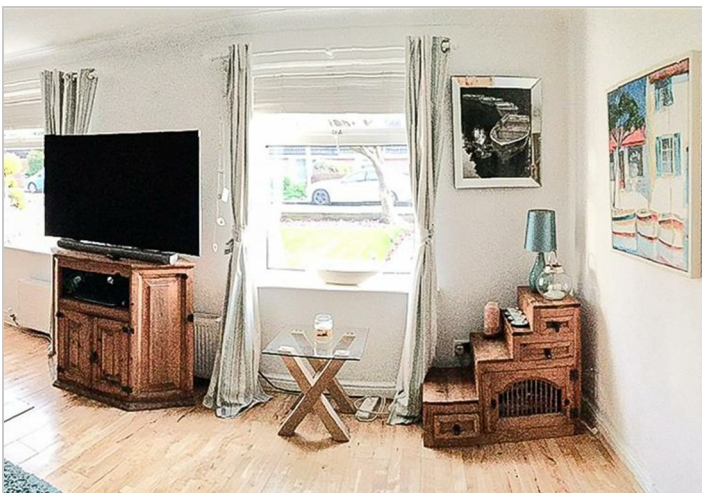
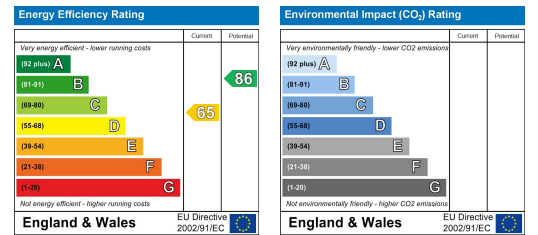
Floor Plan



Area Map



Energy Efficiency Graph



These particulars, whilst believed to be accurate are set out as a general outline only for guidance and do not constitute any part of an offer or contract. Intending purchasers should not rely on them as statements of representation of fact, but must satisfy themselves by inspection or otherwise as to their accuracy. No person in this firm's employment has the authority to make or give any representation or warranty in respect of the property.