



Liverpool Road

Southport, PR8 4PH

£650 Per Month

Flexi-Agent are delighted to present this fantastic newly refurbished one bedroom Apartment to the rental market. Located in the sought after residential area of Ainsdale, it is surrounded by a wealth of local amenities, is a short walk from local transport links providing easy access to Southport town centre, & is a stone's throw from the idyllic Birkdale village.

The property Briefly comprises; Communal entrance hallway, modern living/kitchen a good sized double bedroom and bathroom.

Early inspection of this property is strongly recommended to fully appreciate the accommodation on offer.

Council tax band A.
Deposit £750

Viewing is available immediately by appointment.

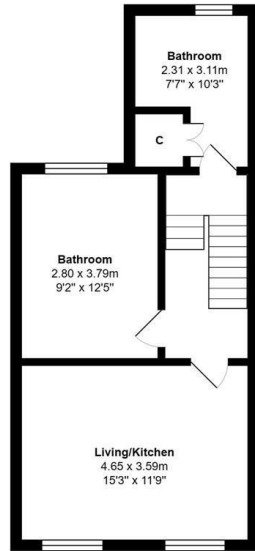
Viewing

Please contact our Flexi-Agent Southport Lettings Office on 01704 889455 if you wish to arrange a viewing appointment for this property or require further information.

- One bedroom apartment
- Sought after location
- Available immediately
- Deposit £750
- Council Tax Band A
- Viewings available on request
- Double bedroom



Floor Plan

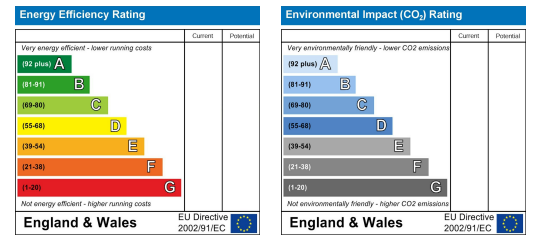


Total Area: 42.7 m² ... 459 ft²
 All measurements are approximate and for display purposes only

Area Map



Energy Efficiency Graph



These particulars, whilst believed to be accurate are set out as a general outline only for guidance and do not constitute any part of an offer or contract. Intending purchasers should not rely on them as statements of representation of fact, but must satisfy themselves by inspection or otherwise as to their accuracy. No person in this firm's employment has the authority to make or give any representation or warranty in respect of the property.