



FLEXIAGENT

Market Leading, Independent Estate Agents



Southport Road

Southport, PR8 5JF

Offers In Excess Of £300,000

Flexi Agent are delighted to offer to market this stunning detached family home, built in 2017, spanning three magnificent floors, offering circa 1722 square feet of superlative living accommodation. This, bespoke newly built property is a modern and contemporary home that offers a fresh and vibrant living space. This recently constructed property showcases the latest architectural design and features, providing a comfortable and convenient lifestyle for its residents.

As you approach the property, you will notice its sleek and attractive exterior, reflecting the modern construction. The house stands proudly, offering off road parking for several vehicles to the front.

Upon entering the home, you are greeted by a spacious and welcoming reception hallway that sets the tone for the rest of the property. The ground floor features a well-designed open-plan living area, which is a highlight of this property. This expansive space combines the dining and kitchen creating a versatile and sociable area for everyday living and entertaining. The open-plan layout allows for seamless interaction between the different areas, making it ideal for modern lifestyles. The living room is generously proportioned and offers a comfortable space for relaxation and entertainment. Large windows overlooking the front, with lots of natural light to flood the room, creating a bright and airy ambiance. This area provides a cosy and inviting space to unwind and enjoy leisure time with family and friends.

The modern kitchen is integrated into the open-plan layout, offering a sleek and functional space for culinary endeavours. It is equipped with high-quality appliances, ample storage, and counter top space for meal preparation. The contemporary design and finishes of the kitchen add to the overall aesthetic appeal of the property. There is also a utility room off the kitchen with new pressure cylinder tank & WC cloakroom.

- Four bedroom detached
- Newly built property is a modern & contemporary home
- Spacious and welcoming reception hallway
- Dining & kitchen presenting versatile, sociable area
- Shower room & bathroom
- Living room is generously proportioned
- Utility room off the kitchen with new pressure cylinder tank & WC cloakroom
- Private drive parking & offering off road parking for several vehicles to the front
- Sun catching garden
- Viewings Available Upon Request

Viewing

Please contact our Flexi Agent Southport Office on 01704 889455 if you wish to arrange a viewing appointment for this property or require further information.



4



3



1



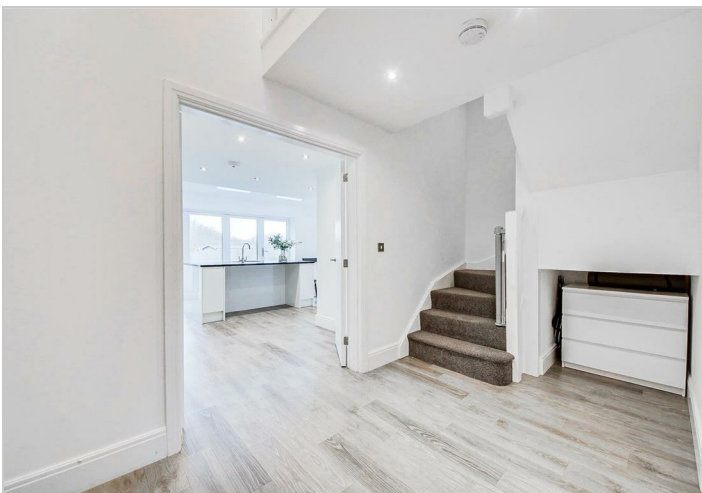
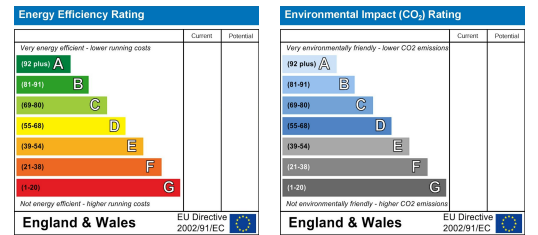
Floor Plan



Area Map



Energy Efficiency Graph



These particulars, whilst believed to be accurate are set out as a general outline only for guidance and do not constitute any part of an offer or contract. Intending purchasers should not rely on them as statements of representation of fact, but must satisfy themselves by inspection or otherwise as to their accuracy. No person in this firm's employment has the authority to make or give any representation or warranty in respect of the property.