



# FLEXIAGENT

Market Leading, Independent Estate Agents



## Milton Street Southport, PR9 7AL

### Offers In The Region Of £150,000

Flexi-Agent is delighted to offer this three-bedroom semi-detached property to the open market. Located close to Southport Town Centre, it is ideally surrounded by a wealth of local amenities, local transport links, shops and schools.

The property briefly comprises on the ground floor: a spacious lounge, a fully fitted kitchen with integrated appliances and a three-piece family bathroom.

The first floor presents two DOUBLE bedrooms and stairs up to a further DOUBLE bedroom.

Externally the property presents an ample paved driveway and a landscaped sun catching garden to the rear.

Early inspection of the property is highly recommended to fully appreciate the accommodation on offer.

Viewings are available upon request.

Freehold  
Council Tax Band B  
EPC F

- Semi-detached house Circa 930sqft
- Three DOUBLE bedrooms
- Spacious lounge
- Fully fitted kitchen with integrated appliances
- Three-piece family bathroom
- Ample paved driveway
- Landscaped sun catching rear garden
- Council Tax Band B
- Located close to Southport Town Centre
- Viewings available upon request

### Viewing

Please contact our Flexi Agent Southport Office on 01704 889455 if you wish to arrange a viewing appointment for this property or require further information.





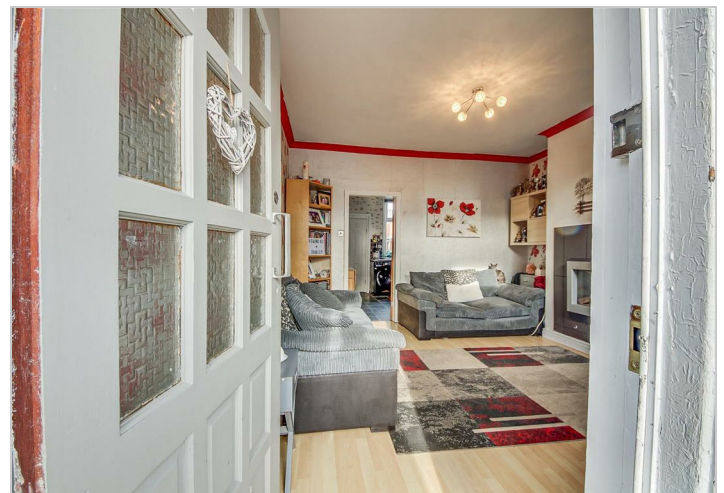
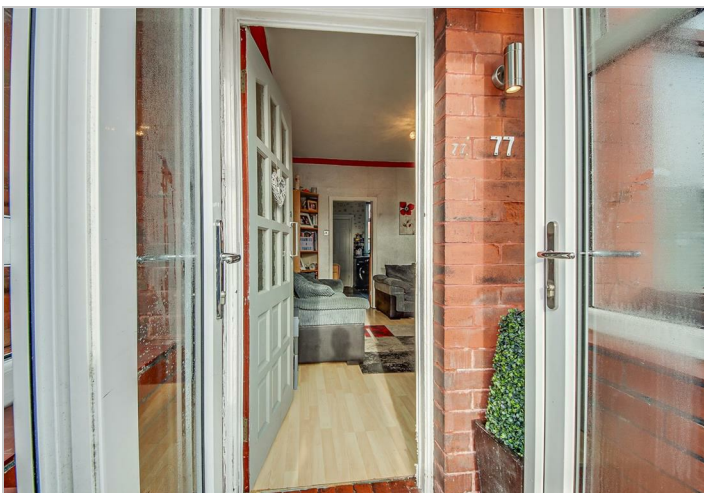
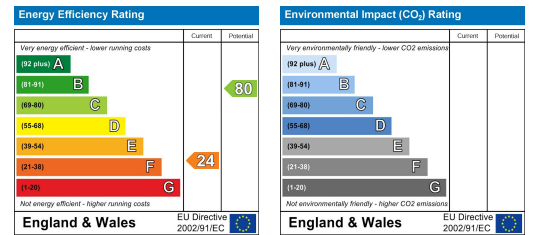
## Floor Plan



## Area Map



## Energy Efficiency Graph



These particulars, whilst believed to be accurate are set out as a general outline only for guidance and do not constitute any part of an offer or contract. Intending purchasers should not rely on them as statements of representation of fact, but must satisfy themselves by inspection or otherwise as to their accuracy. No person in this firm's employment has the authority to make or give any representation or warranty in respect of the property.