



FLEXIAGENT

Market Leading, Independent Estate Agents



Sefton Street

Southport, PR8 5DA

Offers In Excess Of £210,000

Flexi Agent is proud to promote this Three DOUBLE bedroom semi-detached family home, situated in a prime residential location, close to a wealth of amenities. Birkdale Village & Southport Town Centre are both conveniently accessible. This property is an ideal family home. This property is AVAILABLE WITH NO ONWARDS CHAIN.

The property briefly comprises on the ground floor: a spacious lounge, a second reception room, a fully fitted shaker-style kitchen and a utility room with space for a washer and dryer.

The first floor presents three DOUBLE bedrooms and a four-piece family bathroom.

Externally the property offers an ample paved driveway for off-road parking and a beautifully landscaped garden area to the rear.

Early inspection of the property is highly recommended to fully appreciate the accommodation on offer.

Viewings are available upon request.

Freehold
Council Tax Band B
EPC D

- Semi Detached House Circa 1230sqft
- Three DOUBLE bedrooms
- Spacious lounge
- Second reception room
- Shaker style kitchen/diner
- Four-piece family bathroom
- Utility room with space for washer and dryer
- Ample paved driveway
- Beautifully landscaped garden
- NO CHAIN

Viewing

Please contact our Flexi Agent Southport Office on 01704 889455 if you wish to arrange a viewing appointment for this property or require further information.



3



1



2



D

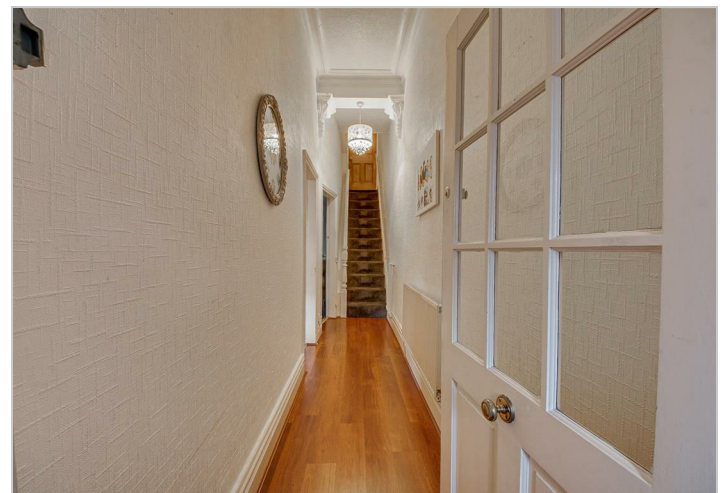
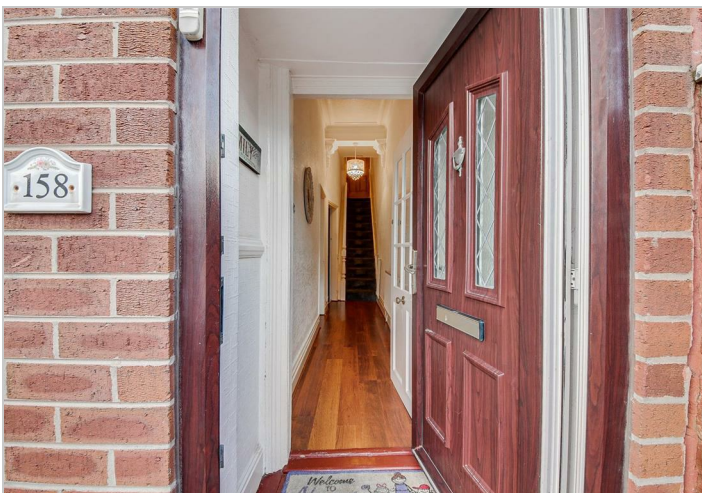
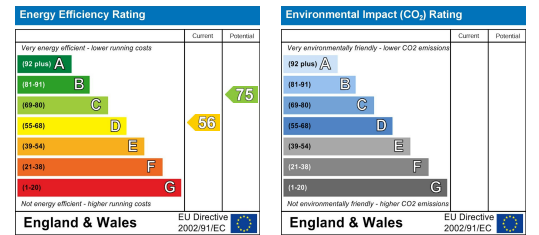
Floor Plan



Area Map



Energy Efficiency Graph



These particulars, whilst believed to be accurate are set out as a general outline only for guidance and do not constitute any part of an offer or contract. Intending purchasers should not rely on them as statements of representation of fact, but must satisfy themselves by inspection or otherwise as to their accuracy. No person in this firm's employment has the authority to make or give any representation or warranty in respect of the property.