



FLEXIAGENT

Market Leading, Independent Estate Agents



Waterloo Road, Birkdale

Southport, PR8 2LR

£1,000,000

Flexi-Agent are delighted to offer for sale this beautifully imposing four bedroom detached property, located in a prestigious and highly sought after location in Birkdale. This stunning home is located in a prime position within close proximity to the world famous Royal Birkdale Golf Course and the delightful village centre with its plethora of bars, eateries and quaint shops. For families there are also a vast array of highly regarded schools in the area.

This superb four-bedroom detached establishment to the front boasts a generous driveway that is gated and is accompanied by a double garage. Internally the home features five reception rooms, four generously sized bedrooms and two bathrooms with one of which being a fabulous ensuite and the other being a contemporary three-piece bathroom. The property's desirable location, spacious grounds, well-appointed interior with stylish decor and modernisation makes it a perfect choice for those looking for a comfortable home in Birkdale.

The spacious accommodation briefly comprises: Entrance porch, grand reception hall, an open living room, dining area with glass sliding doors to the patio, a kitchen/diner with access to the rear, a spacious family room & a sitting room that also grants access to the garden. Further onwards to the ground floor the property offers a double garage and a games room.

To the second floor, you are gifted an ample landing that links you to the contemporary bathroom and all four of the generously sized bedrooms with one including the en-suite with a walk in shower and two of which having access to the balcony that overlooks the garden.

- Detached family home, circa 3105 square feet
- Four generously sized bedrooms
- Five spacious reception rooms
- Grand reception hall
- Modern fitted L-shaped kitchen/diner
- Contemporary three-piece bathroom & fabulous en-suite with walk in shower
- Extensive garden with a pond & an array of lushes trees, bushes and shrubs
- Gated paved driveway & double garage
- This stunning home is located in a prime position within close proximity to the world famous Royal Birkdale Golf Course and the delightful village centre with its plethora of bars, eateries and quaint shops
- Viewings available upon request.

Viewing

Please contact our Flexi Agent Southport Office on 01704 889455 if you wish to arrange a viewing appointment for this property or require further information.



4



2

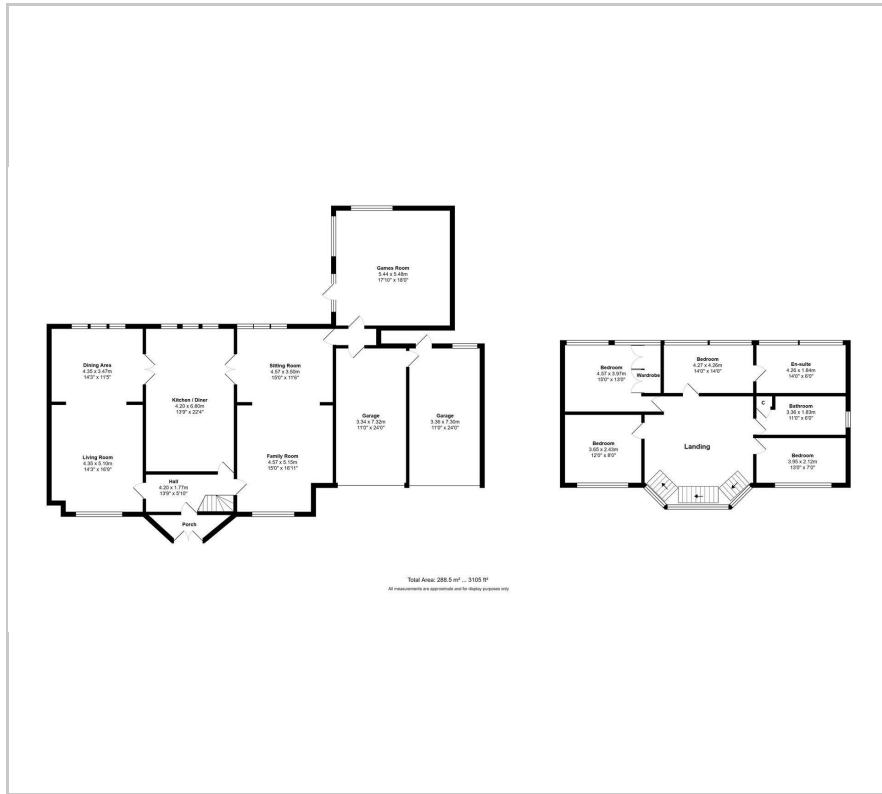


5



D

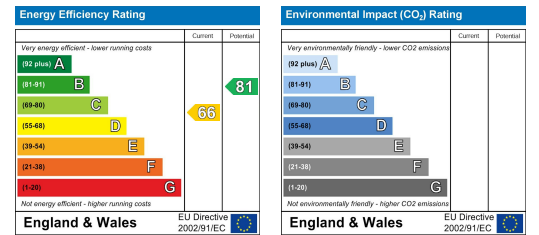
Floor Plan



Area Map



Energy Efficiency Graph



These particulars, whilst believed to be accurate are set out as a general outline only for guidance and do not constitute any part of an offer or contract. Intending purchasers should not rely on them as statements of representation of fact, but must satisfy themselves by inspection or otherwise as to their accuracy. No person in this firm's employment has the authority to make or give any representation or warranty in respect of the property.