



## Unit 6, Alexandria Drive, Ashton-under-Lyne, OL7 0QN

Modern Trade Counter / Industrial Unit

### Summary

<b>Tenure</b>	To Let
<b>Available Size</b>	5,087 sq ft / 472.60 sq m
<b>Rent</b>	Rent on application
<b>Rateable Value</b>	£35,250
<b>EPC Rating</b>	C (75)

### Key Points

- Located on the well established Alexandria Court trade park
- Prominent location close to Ashton under Lyne town centre
- Dedicated car parking
- Close to Jct 23 M60
- 7.25m eaves height
- Adjacent occupiers include Screwfix, Toolstation, City Plumbing, Würth and Selco

# Unit 6, Alexandria Drive, Ashton-under-Lyne, OL7 0QN

## Summary

Available Size	5,087 sq ft
Rent	Rent on application
Rateable Value	£35,250
VAT	Applicable
Legal Fees	Each party to bear their own costs
EPC Rating	C (75)

## Location

The subject property forms part of Alexandria Court which is situated on Ashton Commerce Park, close to Ashton-Under-Lyne and Ashton Moss Retail Park. The estate is accessed from Lord Sheldon Way and benefit from a frontage to the A635 Manchester Road. The premises offer excellent access to the M60 motorway via Junction 23 which in turn gives good access to the M62 and M56 motorways. The premises are 6 miles to the north east of Manchester City Centre and 14 miles north east of Manchester International Airport. Other occupier in the nearby vicinity include Screwfix, Toolstation, Selco and B&Q.

## Description

The property comprises a modern single storey mid terrace trade counter / industrial unit, which is of steel portal frame construction with part concrete blockwork and full height steel clad elevations and roof, incorporating translucent roof lights. The unit is accessed via a electrically operated roller shutter door with a separate personnel entrance. The warehouse area benefits from an eaves height of 7.25m and lighting throughout. Along part of the front elevation is an office suite and WC. Externally there is a shared loading / circulation space and dedicated car parking, with the unit having 7 car parking spaces. The estate is fenced and gated

## Accommodation

The property extends to a gross internal area of 5,087 sq ft.

## Terms

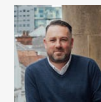
The unit is available to lease on a new full repairing and insuring lease on terms to be agreed.

## Anti-Money Laundering

In accordance with AML Regulations, we are obliged to verify the identity and the source of funds for the potential tenant / purchaser, once a let / sale has been agreed and prior to instructing solicitors.



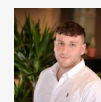
## Viewing & Further Information



### Andy Backhouse

07548 596 271

andy@sixteenrealestate.com



### Cameron Forsyth

07563 249 911

cameron@sixteenrealestate.com

Agents Note: Under Money Laundering Regulations, we are obliged to verify the identity of a proposed purchaser/tenant once a sale/letting has been agreed and prior to instructing solicitors. This is to help combat fraud and money laundering and the requirements are contained in statute. An email will be sent to the proposed purchaser/tenant once the terms have been agreed.

Misrepresentation Act: Sixteen Real Estate for themselves and for the vendors or lessors of this property, whose agents they are give notice that: a) all particulars are set out as general outline only for the guidance of intending purchasers or lessees, and do not comprise part of an offer or contract; b) all descriptions, dimensions, references to condition and necessary permissions for use and occupation, and other details are given in good faith and are believed to be correct but any intending purchasers or tenants should not rely on them as statements or representations of fact but must satisfy themselves by inspection or otherwise as to the correctness of each of them; c) no person in the employment of Sixteen Real Estate has any authority to make any representation of warranty whatsoever in relation to this property. Generated on 21/05/2024