



22  
ST JOHN

# Welcome to St John Street

Welcome to 22 St John Street, sophisticated workspace, elegantly restyled retaining the heritage of this historic building.

Nestled between Deansgate and Spinningfields in Manchester City Centre - 22 St John Street is the perfect location for your business.

Our private offices are made to suit you and your business needs. You can work how you want, where you want, with a range of communal spaces available over 3 floors for you and your team.



# The Building

22 St John Street is a stunning Grade II listed building, located on the only surviving Georgian terraced street in central Manchester.

The property has been fully remodelled to provide sustainable private office suites for the city's thriving business community.



Business Lounge



Meeting Rooms



Heritage Building



Original Features



Lift Access



Zoom Rooms



Cycle Storage



Car Parking



Shower & Changing room



# Private Offices

We have created modern, flexible workspace with offices available from 3 people upwards. Whilst retaining the stunning heritage features of the property, we've incorporated new spaces to ensure you can work as efficiently as possible.



Fully Fitted-out



Ultra-fast Wifi



Superior Acoustic Performance



Luxury Design



Individual Office Temperature Control



Excellent Natural Daylight



Biophilically Designed



Indoor Air Quality

22 St John Street, Manchester, M3 4EB



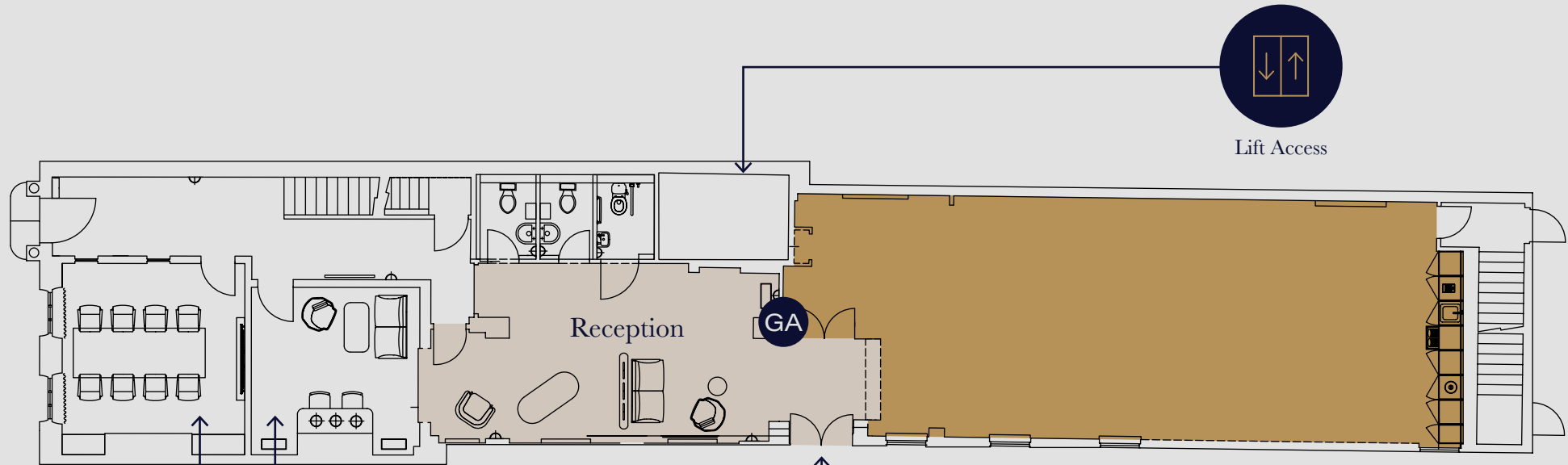
# Your Building



22  
ST JOHN



# Ground Floor



Lift Access



Car Park

Our ground floor suite gives you the opportunity to design your space to fit your requirements with a selection of furniture packages available.

Suite	Desks
GA	18



Meeting Rooms



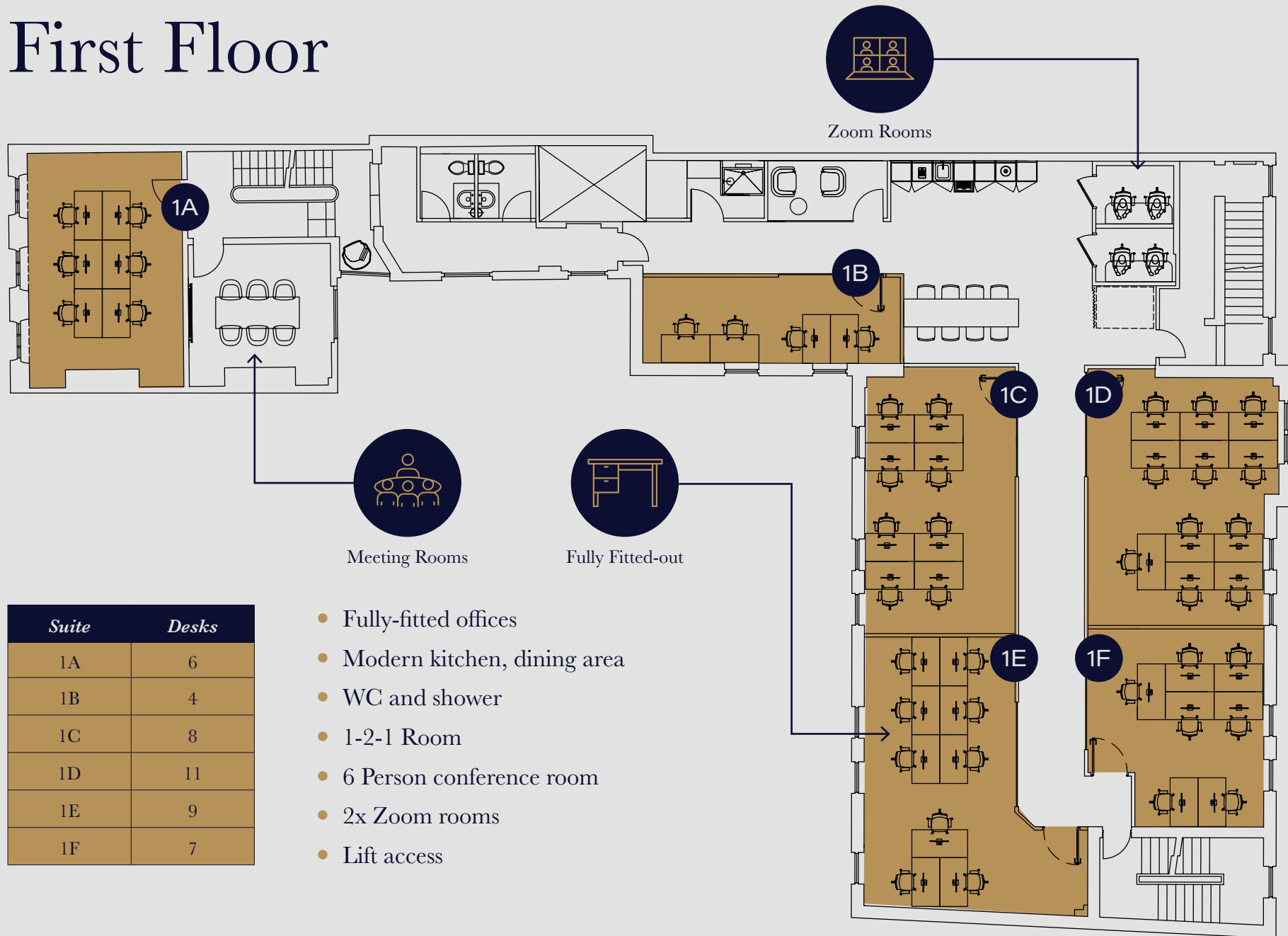
Business Lounge

# Welcome to the Building





# First Floor



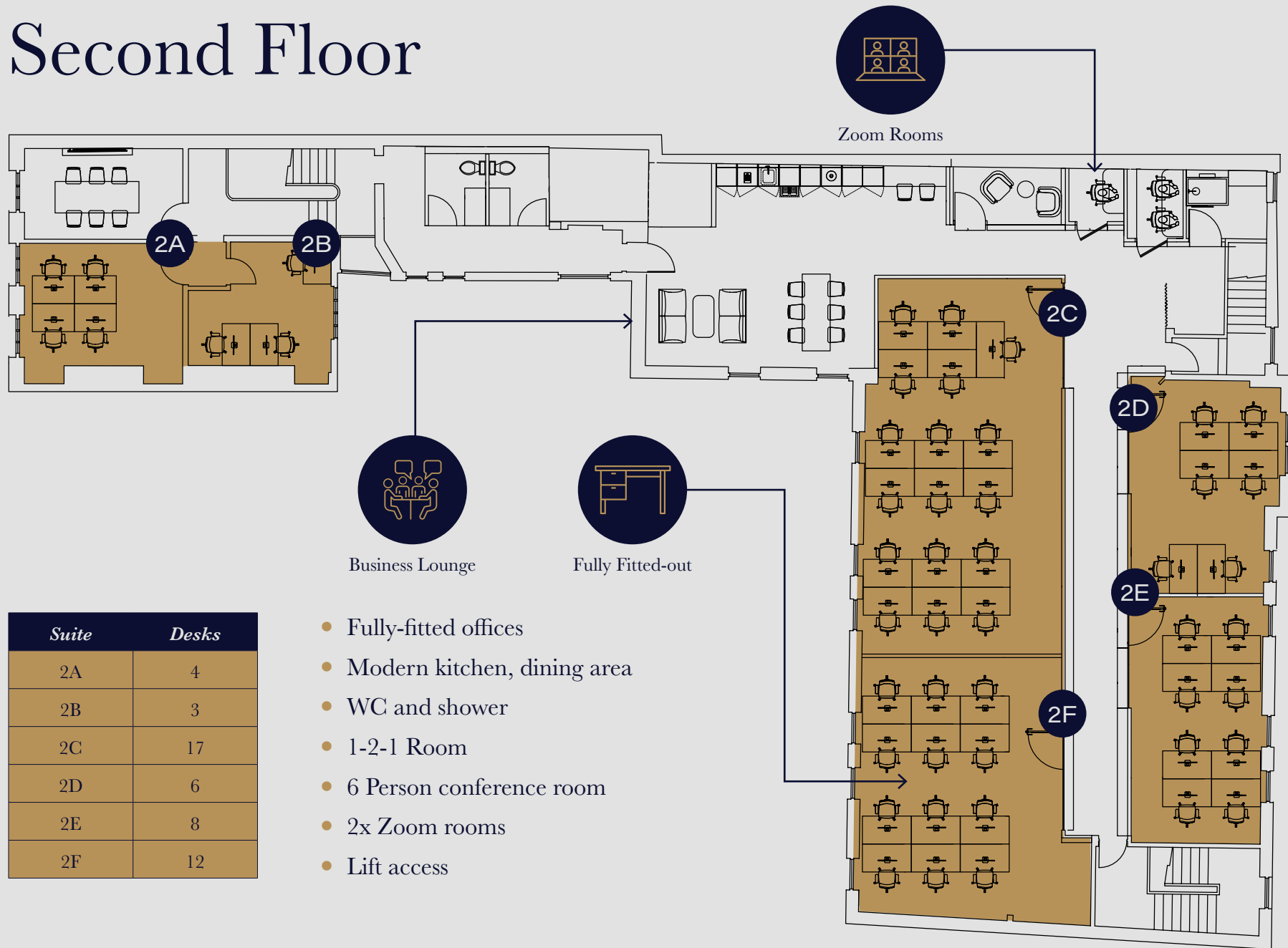
Suite	Desks
1A	6
1B	4
1C	8
1D	11
1E	9
1F	7

- Fully-fitted offices
- Modern kitchen, dining area
- WC and shower
- 1-2-1 Room
- 6 Person conference room
- 2x Zoom rooms
- Lift access

# Kitchen Area



# Second Floor



Suite	Desks
2A	4
2B	3
2C	17
2D	6
2E	8
2F	12

- Fully-fitted offices
- Modern kitchen, dining area
- WC and shower
- 1-2-1 Room
- 6 Person conference room
- 2x Zoom rooms
- Lift access

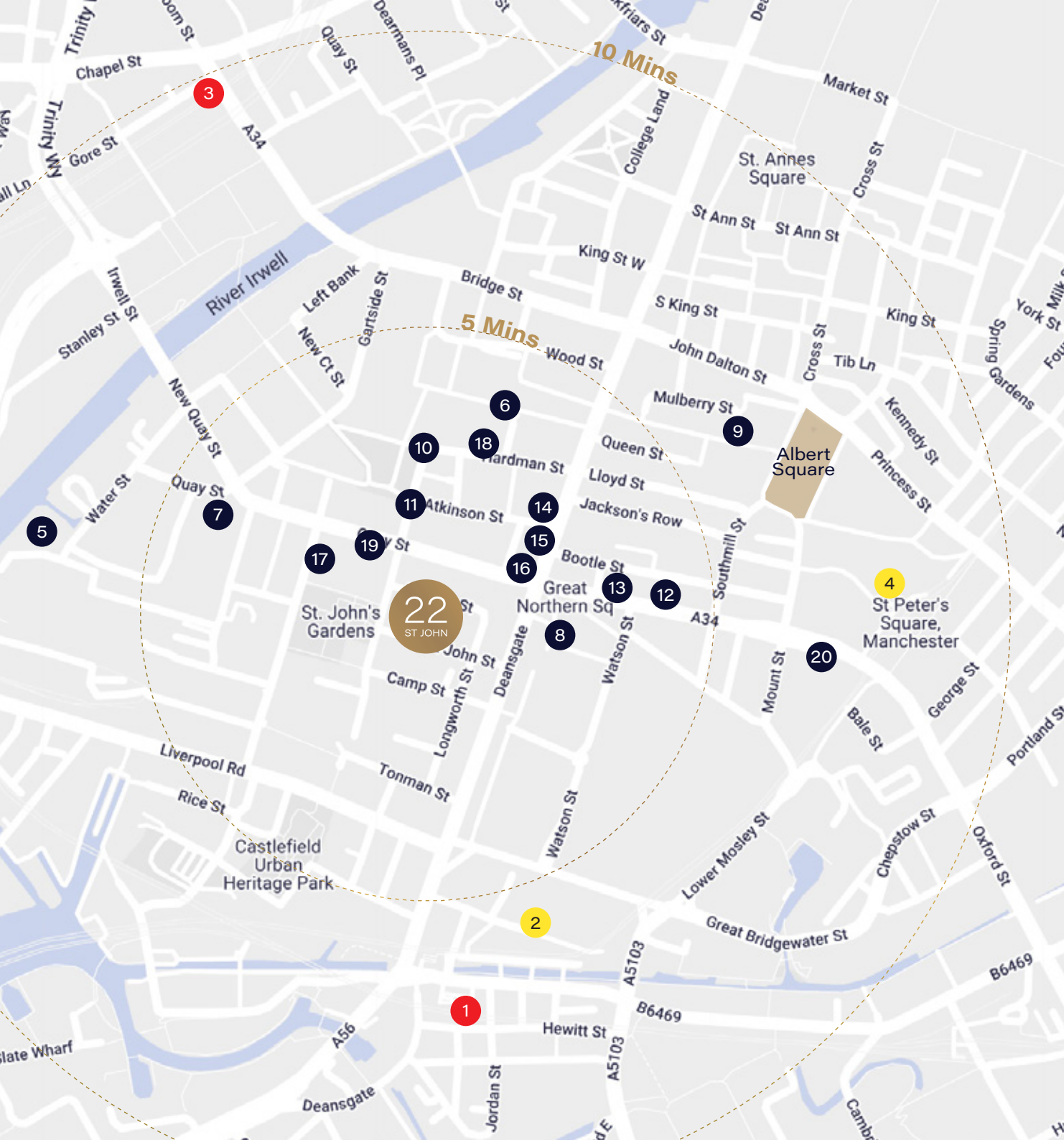
# Communal Space



# Your Neighbourhood



# Location



- 1 Deansgate Train Station
- 2 Deansgate Metrolink Stop
- 3 Salford Central Train Station
- 4 St Peters Square Metrolink Stop
- 5 St Johns - Factory
- 6 Spinningfields
- 7 Soho House
- 8 Great Northern
- 9 Maray
- 10 The Ivy
- 11 20 Stories
- 12 Rudy's
- 13 Albert's Schloss
- 14 Hawksmoor
- 15 Federal
- 16 Flat Iron Steak
- 17 Barrys Bootcamp
- 18 Pure Gym
- 19 Everyman
- 20 Midland Hotel



*Walking*

- Spinningfields - 3 mins
- St Peters Square - 6 mins
- Market Street - 8 mins
- Piccadilly Train Station - 15 mins



*Cycling*

- Oxford Road Station - 5 mins
- Northern Quarter - 8 mins
- Castlefield - 8 mins
- Piccadilly Train Station - 10 mins



*Train*

- Oxford Road Station - 5 mins
- Salford Central - 5 mins
- Piccadilly Train Station - 10 mins
- London Euston Station - 160 mins



*Metrolink*

- Piccadilly Train Station - 10 mins
- Media City UK - 15 mins
- Chorlton - 20 mins
- Manchester Airport - 40 mins



*Airport*

- Manchester Airport - 30 mins
- City Airport and Heliport - 40 mins
- Liverpool John Lennon - 64 mins



*Taxi*

- Castlefield - 5 mins
- Piccadilly Train Station - 10 mins
- The Northern Quarter - 8 mins



# 22

## ST JOHN

Flexible terms available  
To arrange a viewing contact

### Sixteen.

**Scott Shufflebottom**

scott@sixteenrealestate.com

07715 683 369

22 St John Street, Manchester, M3 4EB

22stjohn.co.uk   @22StJohn

Another project by

# SATIS

GROUP