



Tribeca, Dale Street, Northern Quarter, Manchester, M1 1EY

Brand new Grade A office suites within the heart of the Northern Quarter with excellent building amenities.

Summary

Tenure	To Let
Available Size	2,000 to 19,174 sq ft / 185.81 to 1,781.32 sq m
Rent	£30 per sq ft
Service Charge	£4.50 per sq ft Approx
Rates Payable	£7.50 per sq ft Approx.
EPC Rating	Upon enquiry

Key Points

- New build Grade A office suites
- Brand new M&E including Air Conditioning and LED lighting
- Cycle and shower hub within basement for the benefit of occupiers
- Contemporary, exposed services finish to all floors
- Ground floor leisure offer alongside self contained office reception with concierge service

Tribeca, Dale Street, Northern Quarter, Manchester, M1 1EY

Summary

Available Size	2,000 to 19,174 sq ft
Rent	£30 per sq ft
Rates Payable	£7.50 per sq ft Approx.
Service Charge	£4.50 per sq ft Approx
EPC Rating	Upon enquiry

Accommodation

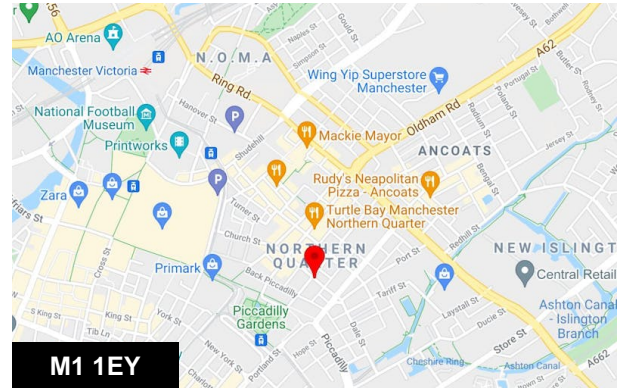
An opportunity to occupier Manchester's most exciting new build workspace located in Manchester's vibrant Northern Quarter. The building comprises 19,174 sq ft of Grade A workspace and Retail / leisure on the ground floor and basement.

Name	sq ft	sq m	Availability
1st - Office	3,226	299.71	Available
2nd - Office	3,226	299.71	Available
Total	6,452	599.42	

Letting Information

Furnishing: Part-furnished

Letting type: Commercial



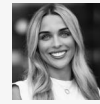
Viewing & Further Information



Scott Shufflebottom

07715683369 | 07715 683 369

scott@sixteenrealestate.com



Rosie Veitch

0161 461 1616 | 07746249920

rosie@sixteenrealestate.com

Agents Note: Under Money Laundering Regulations, we are obliged to verify the identity of a proposed purchaser/tenant once a sale/letting has been agreed and prior to instructing solicitors. This is to help combat fraud and money laundering and the requirements are contained in statute. An email will be sent to the proposed purchaser/tenant once the terms have been agreed.

Misrepresentation Act: Sixteen Real Estate for themselves and for the vendors or lessors of this property, whose agents they are give notice that: a) all particulars are set out as general outline only for the guidance of intending purchasers or lessees, and do not comprise part of an offer or contract; b) all descriptions, dimensions, references to condition and necessary permissions for use and occupation, and other details are given in good faith and are believed to be correct but any intending purchasers or tenants should not rely on them as statements or representations of fact but must satisfy themselves by inspection or otherwise as to the correctness of each of them; c) no person in the employment of Sixteen Real Estate has any authority to make any representation of warranty whatsoever in relation to this property. Generated on 01/07/2024