
OFFICE SPACE

CREATED WITH
EXCELLENCE IN
MIND



BOW CHAMBERS
TIB LANE • MANCHESTER

ENTER

BOW CHAMBERS

DESCRIPTION

Bow Chambers is a late 19th Century period, Grade II listed building arranged over basement, ground and four upper floors of office accommodation. The building benefits from an impressive remodelled entrance with premium quality finishes throughout. The quality of refurbishment is apparent throughout delivering premium quality finishes, including entrance, lobby areas and office floors.



[BACK](#) [NEXT](#)



BOW CHAMBERS
TIB LANE • MANCHESTER

SPECIFICATION

- Extensively remodelled and refurbished common areas and entrance reception.
- Fully refurbished open plan office layout.
- Four pipe fan coil air conditioning.
- Suspended ceilings with recessed LG7 compliant lighting.
- Kitchen facilities on each floor.
- New 10 person passenger lift.
- Reconfigured WCs fitted to premium quality.
- Shower facilities.



[BACK](#) [NEXT](#)



BOW CHAMBERS
TIB LANE • MANCHESTER

DESCRIPTION

SPECIFICATION

AVAILABILITY

FLOOR PLANS

LOCATION

GALLERY

CONTACT

FLOOR	SQ FT	SQ M
4TH FLOOR	LET TO PATRICK PROPERTIES	
3RD FLOOR	2,595	241
2ND FLOOR	2,638	241
1ST FLOOR	2,600	241



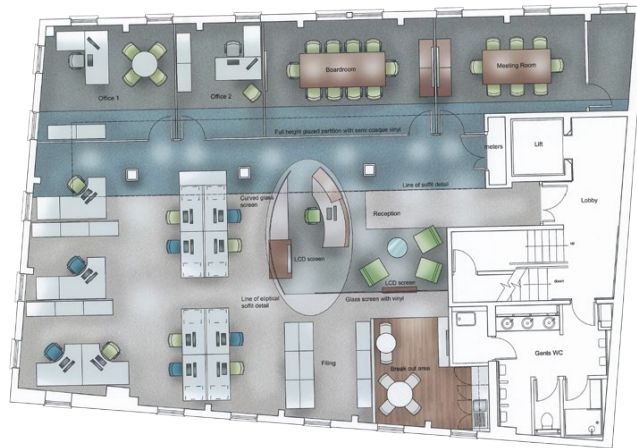
[CLICK TO FLOOR PLANS >](#)

[BACK](#) [NEXT](#)



BOW CHAMBERS
TIB LANE • MANCHESTER

2ND FLOOR – 2,590 SQ FT



3RD FLOOR – 2,590 SQ FT

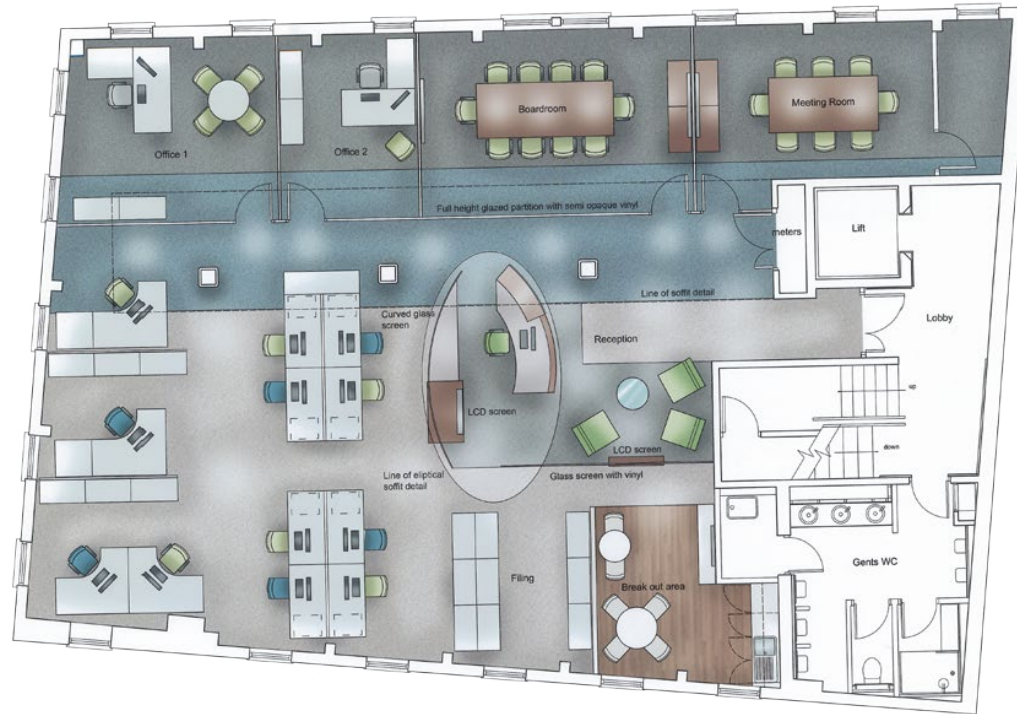


BACK NEXT



BOW CHAMBERS
TIB LANE • MANCHESTER

INDICATIVE SPACE PLAN



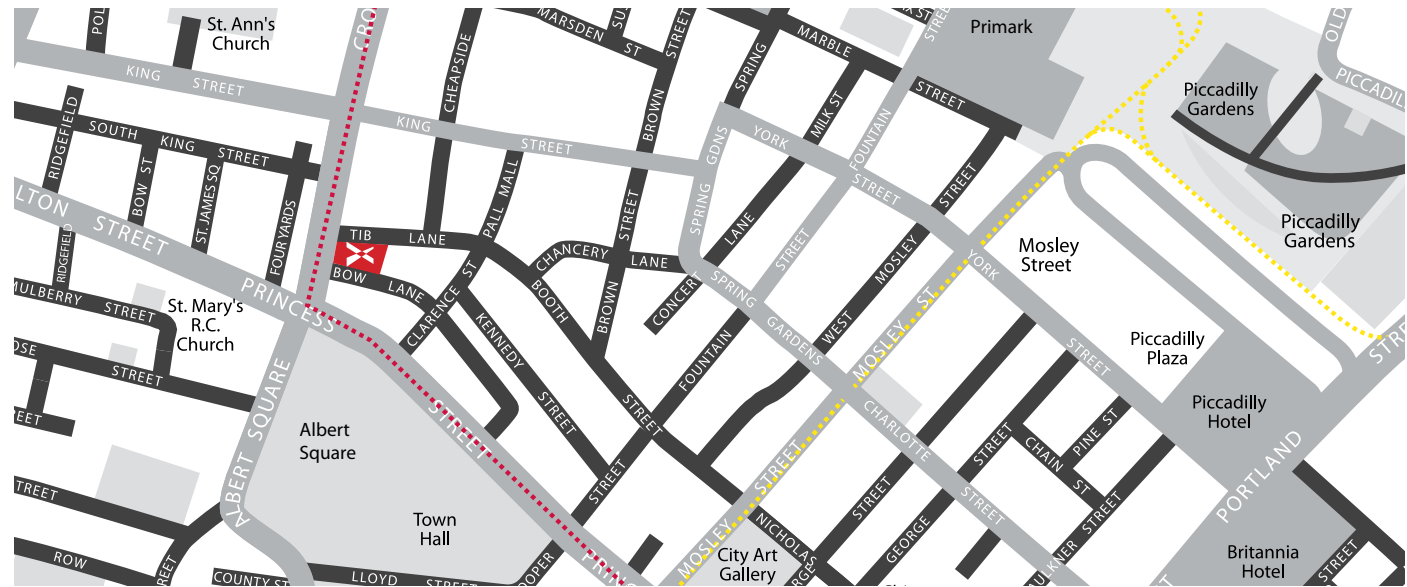
CLOSE FLOOR

LOCATION

Bow Chambers is prominently located on Cross Street accessed from Tib Lane within the Albert Square conservation area. This is a unique position at the heart of Manchester's prime financial and professional district and surrounded by the many high quality retail and leisure outlets including the Marks and Spencer flagship store, Selfridges, House of Fraser, Harvey Nichols and Jamie's Italian. The building is within close proximity of the Metrolink stations at both St Peter's Square and Mosley Street and the railway stations of Victoria and Piccadilly.

[CLICK TO VIEW STREET MAP >](#)

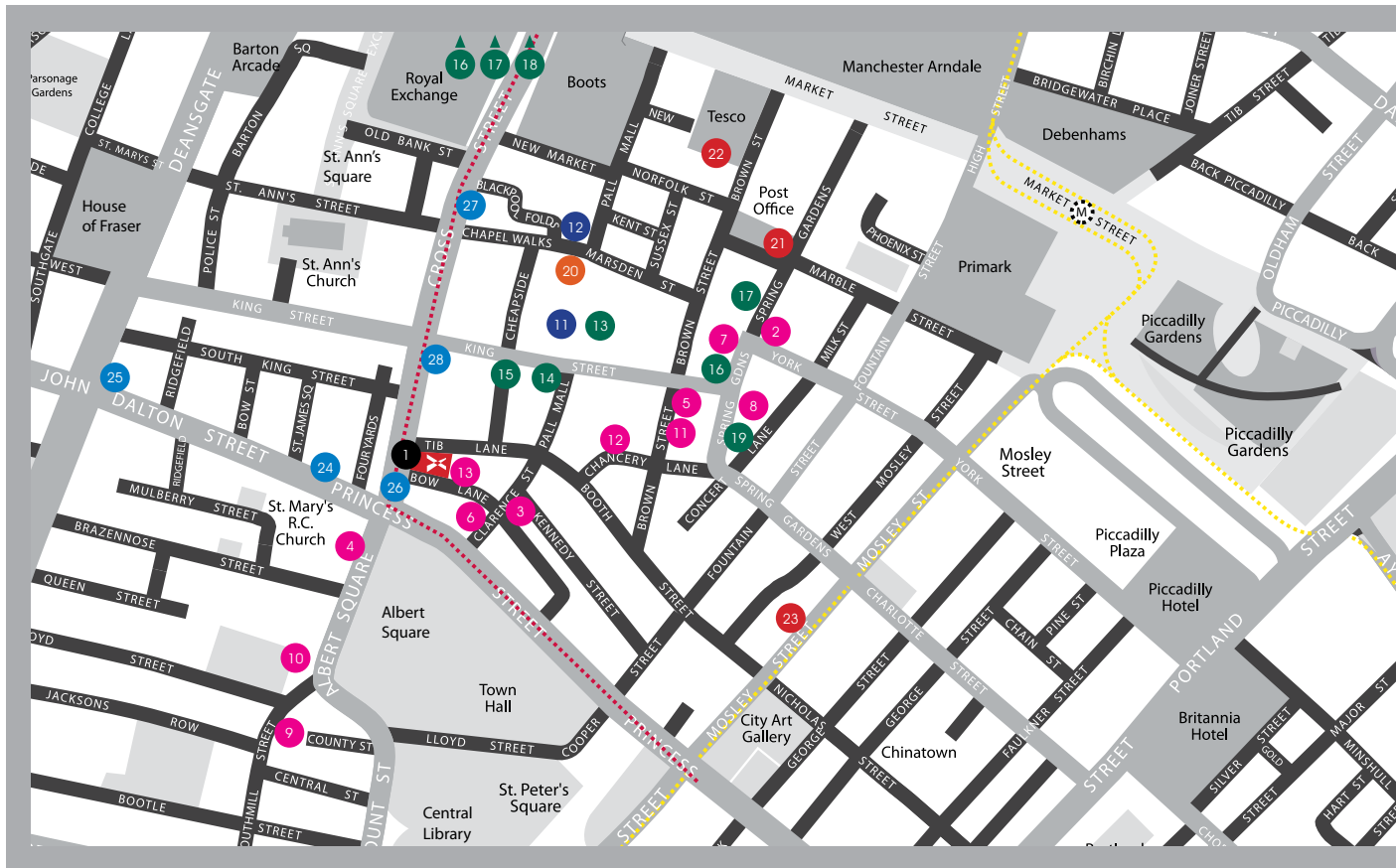
[CLICK TO VIEW GOOGLE MAP >](#)



[BACK](#) [NEXT](#)



BOW CHAMBERS
TIB LANE • MANCHESTER



1. BOW CHAMBERS

RESTAURANTS

- 2. Browns
- 3. Croma
- 4. Duttons
- 5. Jamie's Italian
- 6. Piccolinos
- 7. Room
- 8. Rosso
- 9. Tampopo
- 10. Slug and Lettuce
- 11. Hotel Gotham
- 12. Burger & Lobster
- 13. Dogs 'n' Dough

BARS

- 11. All Bar One
- 12. Sam's Chop House

RETAIL

- 13. Bang & Olufsen
- 14. Belstaff
- 15. DKNY
- 16. Harvey Nichols
- 17. Hervia Bazaar
- 16. Pretty Green
- 17. M&S
- 18. Selfridges
- 19. Vivienne Westwood

LEISURE

- 20. Sports Direct gym

FOOD

- 21. Philpotts
- 22. Tesco
- 23. Sainsbury's

CAFES

- 24. Splendid Kitchen
- 25. Katsouris Deli & Cafe
- 26. Caffe Nero
- 27. Pret A Manger
- 28. Eat

Metrolink

Metrolink second city crossing



LOCATION

Bow Chambers is prominently located on Cross Street accessed from Tib Lane within the Albert Square conservation area. This is a unique position at the heart of Manchester's prime financial and professional district and surrounded by the many high quality retail and leisure outlets including the Marks and Spencer flagship store, Selfridges, House of Fraser, Harvey Nichols and Jamie's Italian. The building is within close proximity of the Metrolink stations at both St Peter's Square and Mosley Street and the railway stations of Victoria and Piccadilly.

[CLICK TO VIEW STREET MAP >](#)

[CLICK TO VIEW GOOGLE MAP >](#)



AMENITIES ●○○○○○

[BACK](#) [NEXT](#)



BOW CHAMBERS
TIB LANE • MANCHESTER

LOCATION

Bow Chambers is prominently located on Cross Street accessed from Tib Lane within the Albert Square conservation area. This is a unique position at the heart of Manchester's prime financial and professional district and surrounded by the many high quality retail and leisure outlets including the Marks and Spencer flagship store, Selfridges, House of Fraser, Harvey Nichols and Jamie's Italian. The building is within close proximity of the Metrolink stations at both St Peter's Square and Mosley Street and the railway stations of Victoria and Piccadilly.

[CLICK TO VIEW STREET MAP >](#)

[CLICK TO VIEW GOOGLE MAP >](#)



AMENITIES ○●○○○

[BACK](#) [NEXT](#)



BOW CHAMBERS
TIB LANE • MANCHESTER

LOCATION

Bow Chambers is prominently located on Cross Street accessed from Tib Lane within the Albert Square conservation area. This is a unique position at the heart of Manchester's prime financial and professional district and surrounded by the many high quality retail and leisure outlets including the Marks and Spencer flagship store, Selfridges, House of Fraser, Harvey Nichols and Jamie's Italian. The building is within close proximity of the Metrolink stations at both St Peter's Square and Mosley Street and the railway stations of Victoria and Piccadilly.

[CLICK TO VIEW STREET MAP >](#)

[CLICK TO VIEW GOOGLE MAP >](#)



AMENITIES ○○○○●

[BACK](#) [NEXT](#)



BOW CHAMBERS
TIB LANE • MANCHESTER

LOCATION

Bow Chambers is prominently located on Cross Street accessed from Tib Lane within the Albert Square conservation area. This is a unique position at the heart of Manchester's prime financial and professional district and surrounded by the many high quality retail and leisure outlets including the Marks and Spencer flagship store, Selfridges, House of Fraser, Harvey Nichols and Jamie's Italian. The building is within close proximity of the Metrolink stations at both St Peter's Square and Mosley Street and the railway stations of Victoria and Piccadilly.

[CLICK TO VIEW STREET MAP >](#)

[CLICK TO VIEW GOOGLE MAP >](#)



AMENITIES ○○○○○●

[BACK](#) [NEXT](#)



BOW CHAMBERS
TIB LANE • MANCHESTER

LOCATION

Bow Chambers is prominently located on Cross Street accessed from Tib Lane within the Albert Square conservation area. This is a unique position at the heart of Manchester's prime financial and professional district and surrounded by the many high quality retail and leisure outlets including the Marks and Spencer flagship store, Selfridges, House of Fraser, Harvey Nichols and Jamie's Italian. The building is within close proximity of the Metrolink stations at both St Peter's Square and Mosley Street and the railway stations of Victoria and Piccadilly.

[CLICK TO VIEW STREET MAP >](#)

[CLICK TO VIEW GOOGLE MAP >](#)



AMENITIES ○○○○●

[BACK](#) [NEXT](#)



BOW CHAMBERS
TIB LANE • MANCHESTER

DESCRIPTION

SPECIFICATION

AVAILABILITY

FLOOR PLANS

LOCATION

GALLERY

CONTACT



NEXT



BOW CHAMBERS
TIB LANE • MANCHESTER

DESCRIPTION

SPECIFICATION

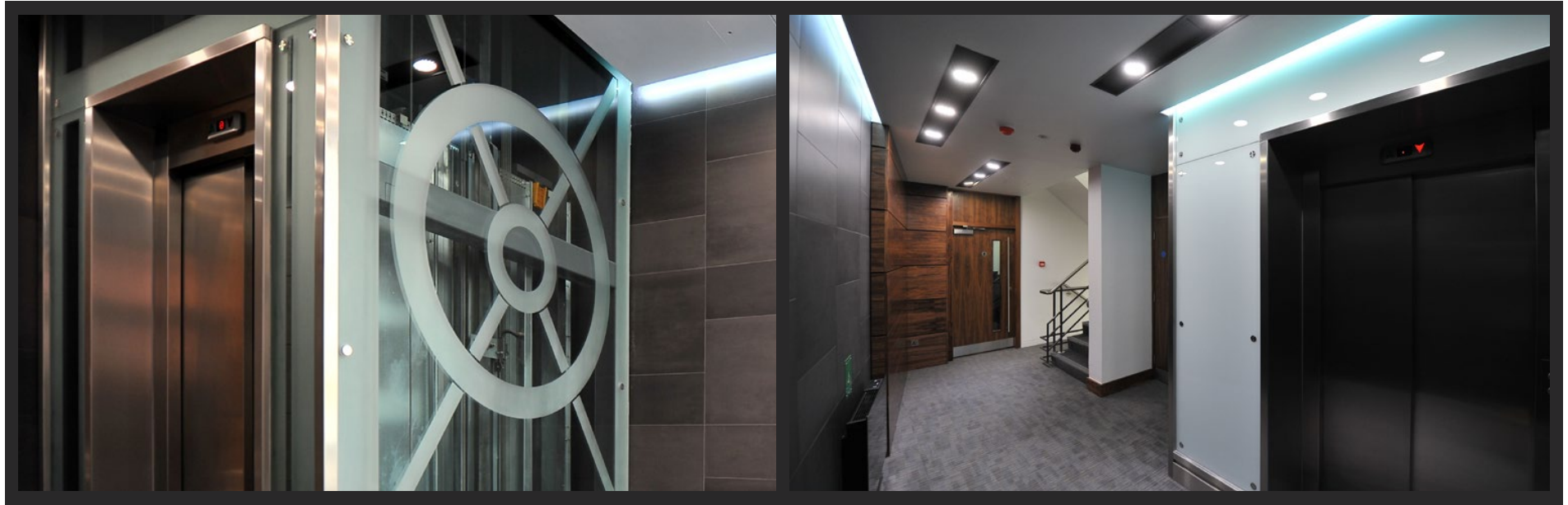
AVAILABILITY

FLOOR PLANS

LOCATION

GALLERY

CONTACT



BACK NEXT



BOW CHAMBERS
TIB LANE • MANCHESTER

DESCRIPTION

SPECIFICATION

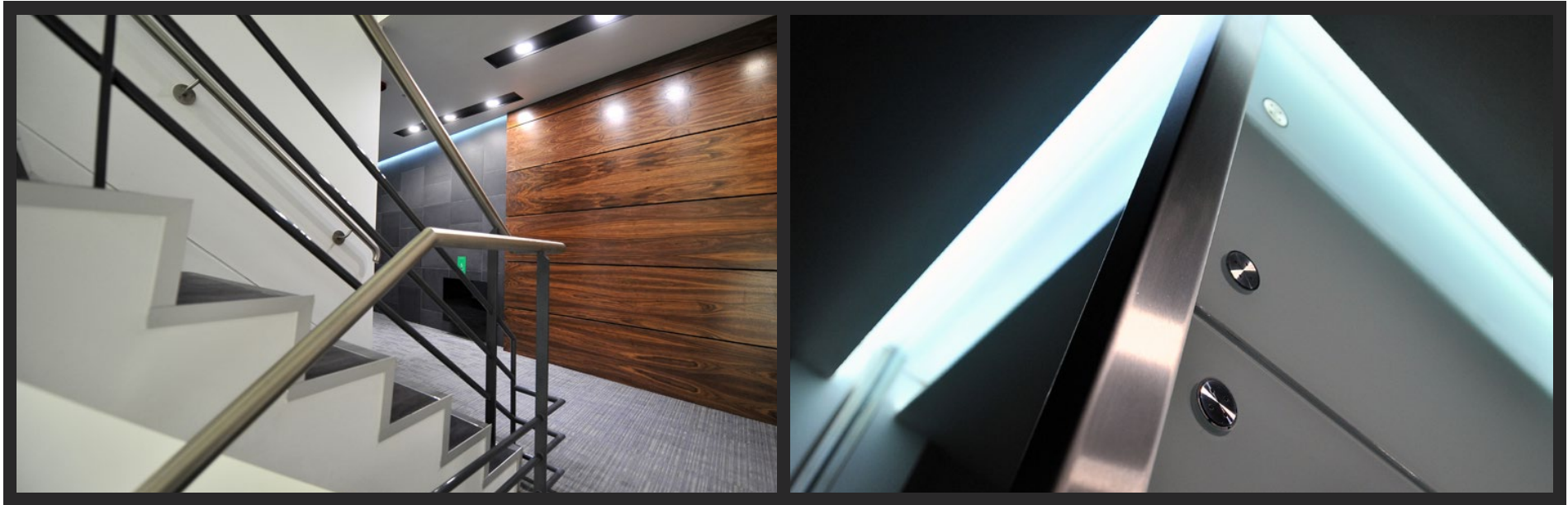
AVAILABILITY

FLOOR PLANS

LOCATION

GALLERY

CONTACT



BACK NEXT



BOW CHAMBERS
TIB LANE · MANCHESTER

DESCRIPTION

SPECIFICATION

AVAILABILITY

FLOOR PLANS

LOCATION

GALLERY

CONTACT



BACK NEXT



BOW CHAMBERS
TIB LANE • MANCHESTER

DESCRIPTION

SPECIFICATION

AVAILABILITY

FLOOR PLANS

LOCATION

GALLERY

CONTACT



BACK NEXT



BOW CHAMBERS
TIB LANE • MANCHESTER

DESCRIPTION

SPECIFICATION

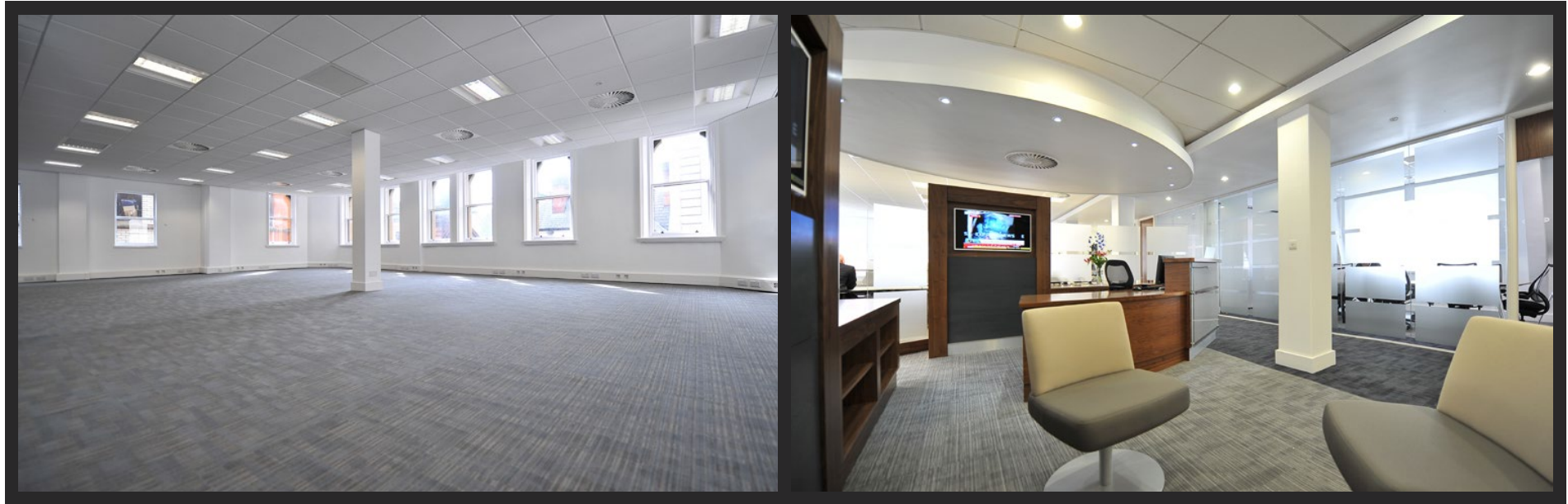
AVAILABILITY

FLOOR PLANS

LOCATION

GALLERY

CONTACT



BACK NEXT



BOW CHAMBERS
TIB LANE • MANCHESTER

DESCRIPTION

SPECIFICATION

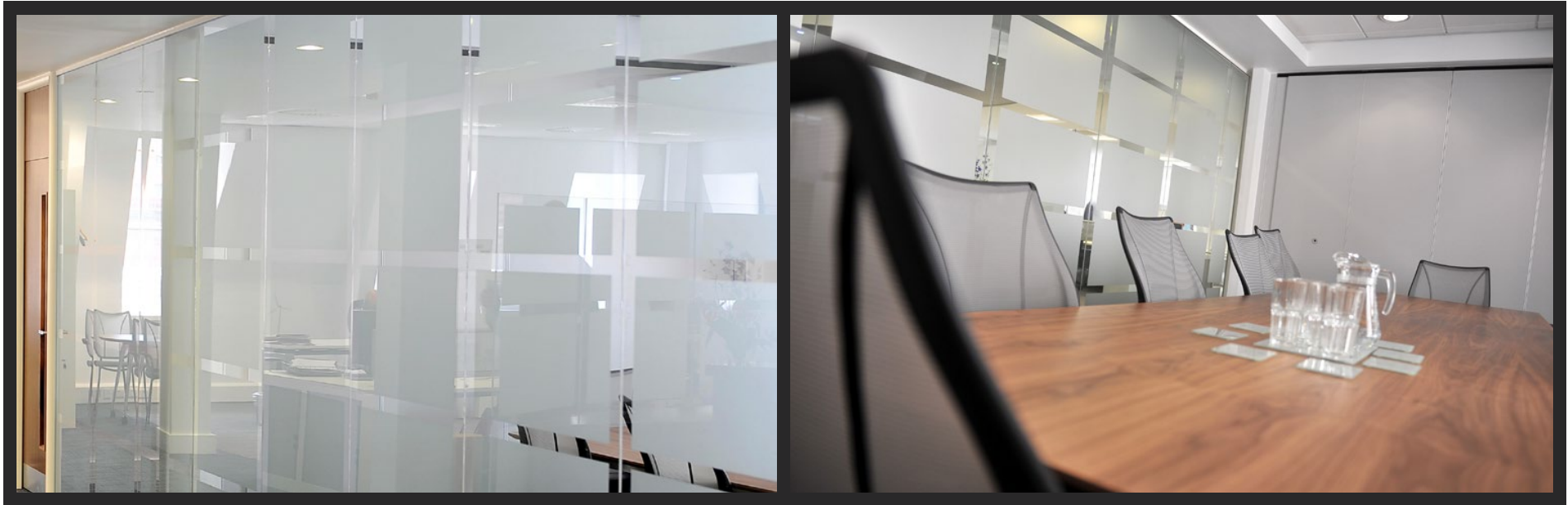
AVAILABILITY

FLOOR PLANS

LOCATION

GALLERY

CONTACT



BACK NEXT



BOW CHAMBERS
TIB LANE • MANCHESTER

DESCRIPTION

SPECIFICATION

AVAILABILITY

FLOOR PLANS

LOCATION

GALLERY

CONTACT



BACK NEXT



BOW CHAMBERS
TIB LANE • MANCHESTER

DESCRIPTION

SPECIFICATION

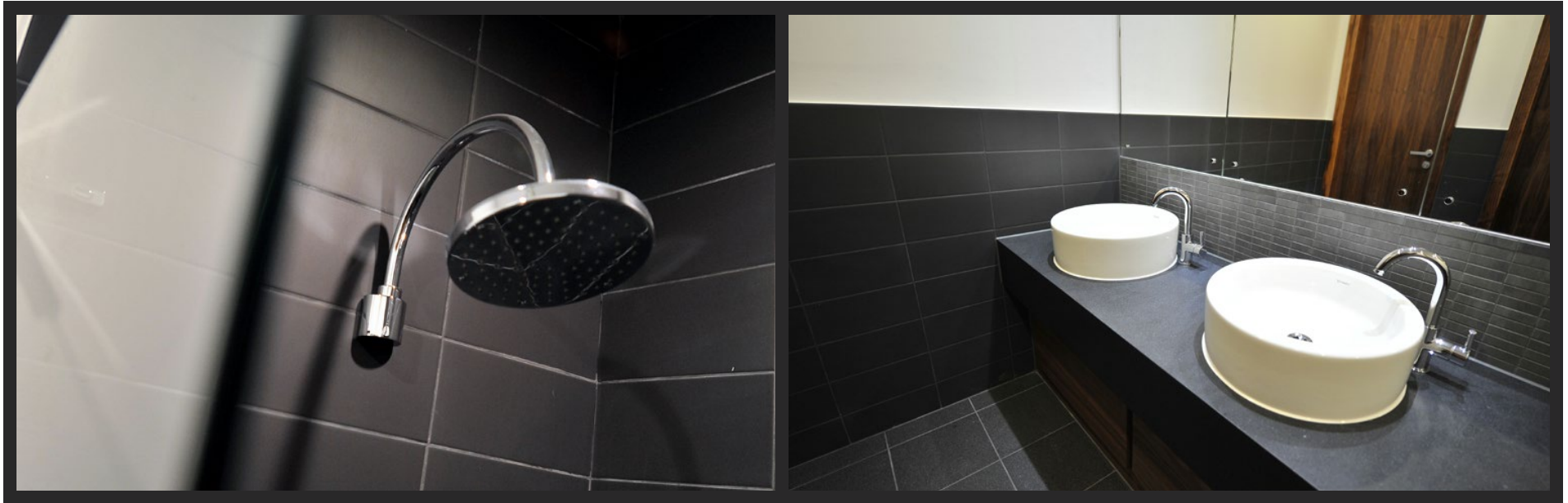
AVAILABILITY

FLOOR PLANS

LOCATION

GALLERY

CONTACT



BACK NEXT



BOW CHAMBERS
TIB LANE • MANCHESTER