

The Blenheim Apartments

1 and 2 bedroom apartments

Apartments 112-122, 216-220 & 222-223



Bellway Homes Limited (Thames Gateway Division)
Bellway House, Anchor Boulevard,
Crossways Business Park, Dartford, Kent DA2 6QH

Telephone: 01689 886400
www.bellway.co.uk

Bellway

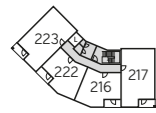


Computer generated image of The Blenheim Apartments.

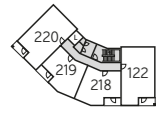
Apartments

The Blenheim Apartments
plots 112-122, 216-220 & 222-223

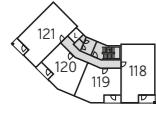
The site plan is drawn to show the relative position of individual properties. NOT TO SCALE. This is a two dimensional drawing and will not show land contours and gradients, boundary treatments, landscaping or local authority street lighting. Footpaths subject to change. For details of individual properties and availability please refer to our Sales Advisor. Key to plan: s/s Sub Station.



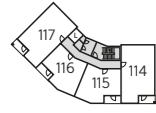
Fourth Floor



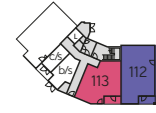
Third Floor



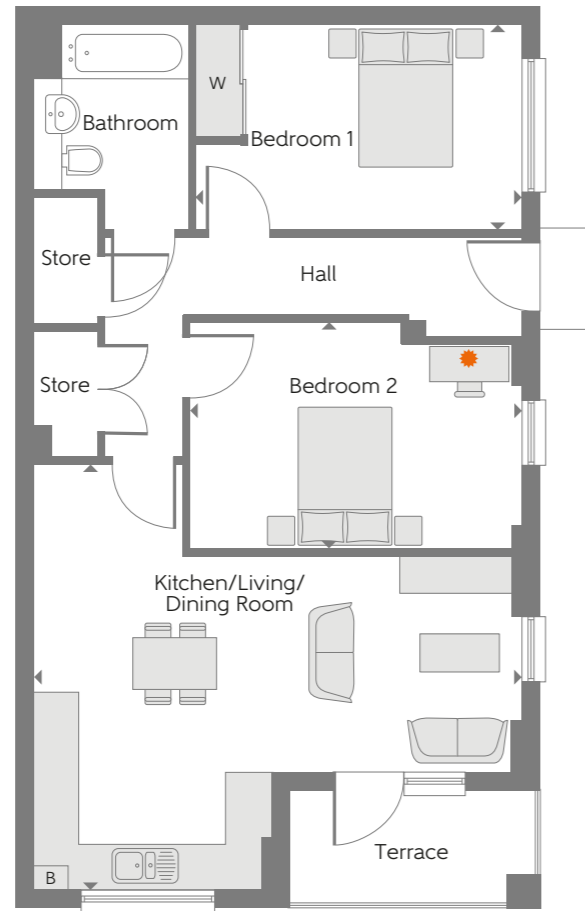
Second Floor



First Floor

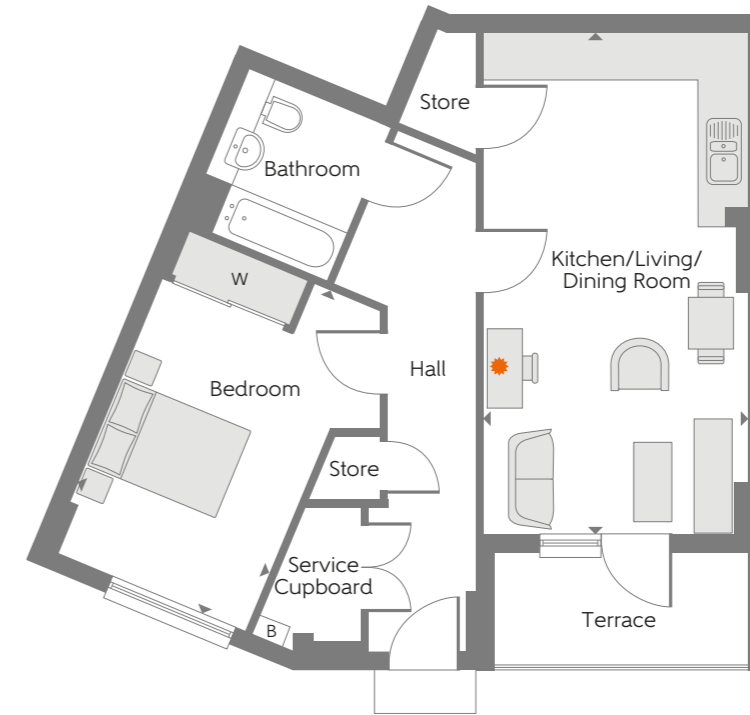


Ground Floor



Blenheim 1
Apartment 112

Kitchen/Living/Dining Room	6.548m x 5.720m	21'6" x 18'9"
Bedroom 1	4.375m x 2.750m	14'4" x 9'0"
Bedroom 2	4.453m x 3.044m	14'7" x 10'0"
Total Area	70.8 sq.m.	762 sq.ft.



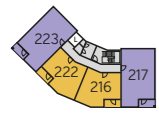
Blenheim 2
Apartment 113

Kitchen/Living/Dining Room	6.723m x 3.493m	22'1" x 11'6"
Bedroom	4.684m x 2.837m	15'4" x 9'4"
Total Area	57.2 sq.m.	616 sq.ft.

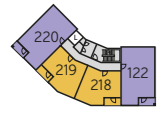
► Indicates where dimensions are taken from

B Boiler ● Suggested working from home area with USB socket

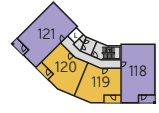
Some items shown in this key may be subject to change, and positions could vary from those indicated on this floorplan. Please refer to Sales Advisor for details of your selected plot. Computer generated image shown overleaf. External finishes and landscaping may vary from plot to plot. Please refer to Sales Advisor for further details. All dimensions are approximate and should not be used for carpet sizes, appliance spaces, or furniture. Furniture not to scale and all positions are indicative. We operate a policy of continuous improvement and individual features such as kitchen and bathroom layouts, doors, windows, garages and elevational treatments may vary from time to time. Consequently these particulars should be treated as general guidance only and do not constitute a contract, part of a contract or a warranty. c/s Cycle store b/s Bin store, L Lift.



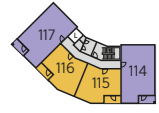
Fourth Floor



Third Floor



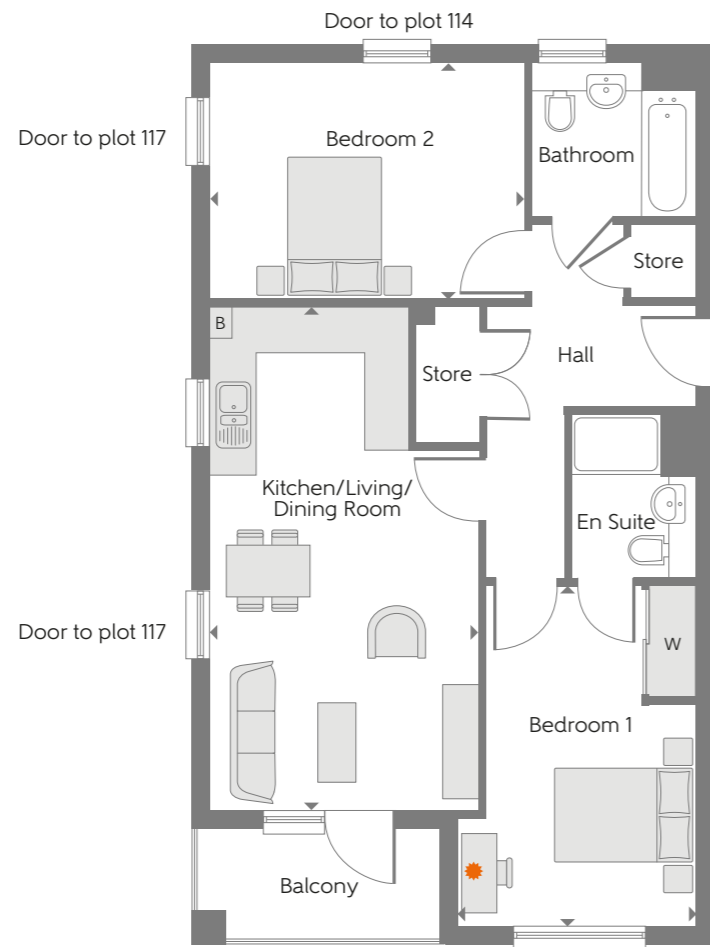
Second Floor



First Floor



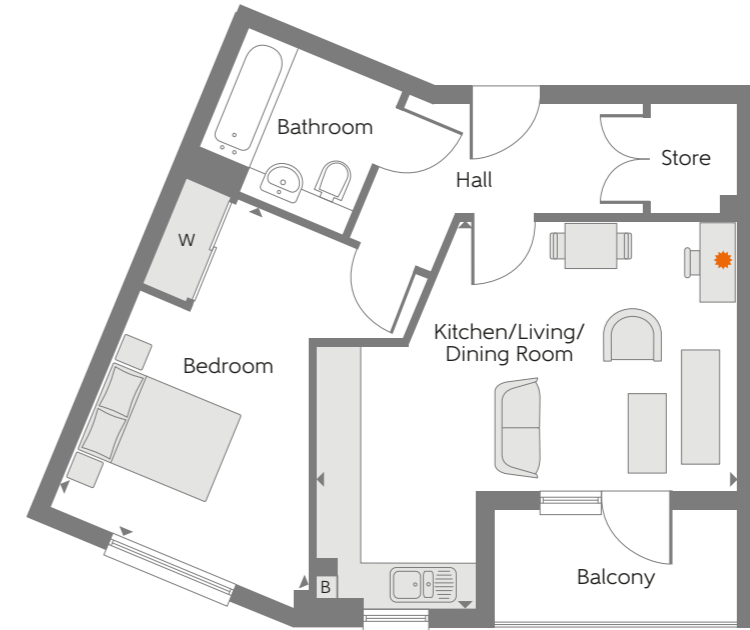
Ground Floor



Blenheim 3

Apartments 114, 117, 118, 121, 122, 217, 220 & 223

Kitchen/Living Dining Room	6.769m x 3.613m	22'2" x 11'10"
Bedroom 1	4.597m x 3.172m	15'1" x 10'5"
Bedroom 2	4.211m x 3.169m	13'10" x 10'5"
Total Area	70.7 sq.m.	761 sq.ft.



Blenheim 4

Apartments 115, 116, 119, 120, 216, 218, 219 & 222

Kitchen/Living Dining Room	5.655m x 5.215m	18'7" x 17'1"
Bedroom	4.794m x 3.716m	15'9" x 12'2"
Total Area	50.2 sq.m.	540 sq.ft.

► Indicates where dimensions are taken from

B Boiler ● Suggested working from home area with USB socket

Some items shown in this key may be subject to change, and positions could vary from those indicated on this floorplan. Please refer to Sales Advisor for details of your selected plot. Computer generated image shown overleaf. External finishes and landscaping may vary from plot to plot. Please refer to Sales Advisor for further details. All dimensions are approximate and should not be used for carpet sizes, appliance spaces, or furniture. Furniture not to scale and all positions are indicative. We operate a policy of continuous improvement and individual features such as kitchen and bathroom layouts, doors, windows, garages and elevational treatments may vary from time to time. Consequently these particulars should be treated as general guidance only and do not constitute a contract, part of a contract or a warranty. c/s Cycle store, b/s Bin store, L Lift.



Apartment Specification

Kitchen

- Handle-less wall units
- Built in oven, gas hob and cooker hood (oven typically within tall unit where space allows)
- Stainless steel splashback
- Integrated fridge/freezer
- Space for microwave, dishwasher and washer dryer
- Feature LED under unit lighting

Bathroom

- White Roca sanitaryware with chrome Bristan fittings
- Mira shower tray and thermostatic shower
- Full height wall tiling around shower, half height tiling to remaining walls

Flooring

- Laminate flooring to hallway, kitchen, dining and living areas
- Tiling to bathrooms and en suite
- Cormar carpets to bedrooms

Telephone and multimedia

- TV outlets to living room and bedroom 1 with digital/freeview and Sky Q/Sky+ HD installed (connection to be arranged by purchaser via communal satellite dish)
- USB sockets to kitchen, living room and bedroom 1
- BT or Hyperoptic connectivity

Internal finishes

- Walls and ceilings finished in white matt emulsion
- White internal doors with chrome fittings
- Downlights to hallway, kitchen, bathroom and en suites
- Energy efficient pendant lighting to living areas and bedrooms (with dimmer switch to main living areas)
- Mains powered smoke and carbon monoxide detector
- Video entry system
- Heating and hot water provided via Ideal LOGIC combination boiler

Miscellaneous

- 10 year NHBC warranty