

SPRINGFIELD PARK

MAIDSTONE | KENT

MODERN LIVING REDEFINED

Weston
Homes 

WELCOME TO
SPRINGFIELD
PARK

MAIDSTONE | KENT



INTRODUCING SPRINGFIELD PARK

In the Garden of England is the vibrant county town of Maidstone, home to Springfield Park, a stunning collection of high specification, one and two bedroom apartments designed and built by Weston Homes.

Springfield Park's ideal location, close to Maidstone East and Maidstone West train stations and the A229, allows you to be in central London in just under an hour, on the M20 in under five minutes and on the M25 within 20 minutes.

Situated adjacent to the River Medway, this desirable development comprises imaginatively designed buildings continuing the vision of the first phase, some with delightful views over the nearby Whatman Park, home to two nature reserves.

The apartments at Springfield Park are set amongst tranquil landscaping with attractive pathway walks and have access to a charming rooftop garden with breath-taking, 360-degree views of Maidstone.

The final phase of this stunning scheme will include a serene Pocket Park overlooking the riverside; another perfect place to relax and recharge.

Computer generated image of Springfield Park

TAILORED TO INDIVIDUAL TASTE

Our spacious elegant apartments feature luxury designer kitchens and bathrooms built to a high specification, with most bedrooms including sleek fitted wardrobes. There is also the opportunity to personalise your new home with our range of top-quality additional choices.





A THRIVING TOWN ON THE BANKS OF THE RIVER MEDWAY

Maidstone is well-served with high-street shops, modern department stores and spacious shopping centres, as well as a bustling, twice-weekly market at Lockmeadow filled with homegrown food and flower stalls. The Mall and Fremlin Walk Shopping Centre both showcase a wide selection of well-known shops and premium brands, whilst The Royal Star Shopping Arcade hosts unique boutiques if you're looking for something a little bit different. Across the River Medway, St Peters Wharf Retail Park offers yet more shopping opportunities and the vast retail destination, Bluewater, is just a 25-minute drive via the A2.

The town is bursting with activity in the evenings with diners, theatre and cinema enthusiasts and party-goers. The town is home to nearly 100 restaurants, bars, food outlets and coffee shops, so the choice of cuisine is endless. A short 20-minute walk from Springfield Park will reveal the delicious Spanish delights of La Taberna and along Pudding Lane, you'll stumble upon La Villetta, a family-run Italian restaurant serving up delicious original-recipe meals.

Since 1955, The Hazlitt Theatre has been a stage to entertain Maidstone, hosting weekly musicals, tribute acts, stand-up comedy shows and dance performances. If you are looking for live music, visit The Green Room and feast on authentic Neapolitan Pizza or stop by Frederic's Café and Bistro for their regular music nights with classic French cuisine. For something a little more unique, book a table upon Kent's only floating venue, Embankments Music and Tapas Bar; it is the place to enjoy Mediterranean dishes whilst listening to live jazz music. Zinc & Popworld, play late night music for you to dance and sing your heart out to with cocktails to hand. Junipers in The Herbalist Bar and Kitchen also have a dance floor and expert mixologists to create your favourite drinks.





PERFECTLY LOCATED FOR AN ACTIVE LIFESTYLE

The Lockmeadow Entertainment Centre provides a one-stop place for leisure with a multi-screen cinema, tenpin bowling, a David Lloyd Sports Health Club and Gravity Indoor Trampoline Park, plus a selection of dining options for a bite to eat. Maidstone Leisure Centre, just two miles away, also offers a swimming pool with diving boards, gym, workout studios and sports hall with courts. For Golf enthusiasts, The Marriott Tudor Park Golf Course and The Cobtree Manor Park Golf Course are both within five miles of Springfield Park.

Springfield Park sits alongside the tranquil Whatman Park with two nature reserves, a skate park, adventure play areas, a treetop walk and a river stage open-air arena; a beautiful place to visit with friends or perfect for a run or cycle alongside the River Medway. Mote Park is also nearby, spanning 180 hectares wide, featuring a lake, woodland and heathland.





SPRINGFIELD PARK
MAIDSTONE | KENT

Maidstone Girls Grammar School

Aldi Superstore

Maidstone East

Brenchley Gardens

Maidstone Museum

Fremlin Walk Shopping Centre

Maidstone Barracks

St Peters Wharf Retail Park

Lidl Superstore

Sainsbury's Superstore

Maidstone West

All Saints Church

Lockmeadow Entertainment Centre



IT'S ALL ABOUT THE LOCATION

Springfield Park is situated 1.5 miles from the M20, which leads directly to the M25 and takes under 20 minutes to reach by car. Gatwick Airport is a 40-minute drive and Ashford International is a half-hour journey by car. Dover Port is also 40 miles away, making Springfield Park a great transport hub for residents.

Not only is your new home served by numerous road links, but it is also within two miles of three train stations; Maidstone East, Maidstone West and Maidstone Barracks. Commuters are able to be in central London in under an hour.



FROM MAIDSTONE WEST



- London St Pancras International 49 min
- Stratford 56 min
- Kings Cross 1 hour
- London Liverpool Street 1 hour 13 min

FROM MAIDSTONE EAST



- Ashford International 23 min
- London Victoria 57 min
- Dover Priory 1 hour
- London Euston 1 hour 14 min
- London Blackfriars 1 hour 17 min
- Gatwick Airport 1 hour 37 min

BY CAR



- M20 1.5 miles
- M2 4.7 miles
- M25 17.9 miles
- Bluewater Shopping Centre 19 miles
- Ashford International 22 miles
- London City Centre 38 miles
- Gatwick Airport 40.7 miles

BY FOOT



- Whatman Park 5 min
- Maidstone East Station 11 min
- Brewers Street Surgery 12 min
- Fremlin Walk Shopping Centre 14 min
- Maidstone West Station 19 min
- Lockmeadow Entertainment Centre 21 min

Sources: National Rail Enquiries, Trainline and Google Maps



Computer generated image of Springfield Park



FINER DETAILS FOR LUXURY LIVING

Your stylish new home at Springfield Park has been designed for modern, open plan living in a contemporary setting. Each apartment is thoughtfully finished to the highest standards with bespoke designer kitchens and luxury bathrooms, all with finishing touches that make a difference. You can also choose from a wide range of options to personalise your new home and make it unique to you.

General Specifications

- Sprinkler system installed to all plots
- Forest oak doors with polished chrome ironmongery, matching wrapped door-lining, architraves and skirtings
- Choice of white oak or ebony oak strip wood flooring to entrance hall, living area, dining area, kitchen and cloakrooms/cupboards*
- Choice of carpets with underlay to bedrooms*
- Fitted wardrobes to principal bedroom
- Television and telephone points to living area and principal bedroom
- USB double power sockets to kitchen and principal bedroom
- Electric heating
- Smoke alarm and CO detectors
- Double-glazed uPVC windows
- Audio/visual entry system

* Choices from developer's range and subject to stage of construction. Specifications are subject to change.

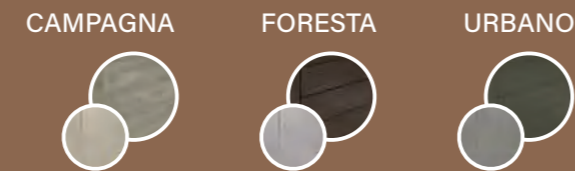
A SPECIFICATION WITH YOU IN MIND

Designer Kitchens

- Zanussi stainless steel electric fan oven
- Zanussi ceramic hob and Caple stainless steel chimney extractor
- Zanussi integrated fridge/freezer, washer/dryer and dishwasher
- Choice of designer units by Oakwood Kitchens*
- Choice of quartz stone worktops and upstands*
- Stainless steel splashback to hob
- Fascino stainless steel sink with oversized single bowl and integrated removable chopping board
- Fascino designer curved tap with clipped hose-spray extension
- Fascino instant boiling water tap
- Integrated stainless steel soap dispenser
- LED lighting under kitchen wall units

Luxury Bathrooms & En-Suites

- Fascino digitally controlled Smart Tap
- Smart Mirror with LED lighting, shaver socket, digital clock and de-mist pad
- Vanity units with integrated storage space in a choice of three distinct and refined colour sets**:



- Sleek Arctic white sinks, beautifully finished with a silky matt feel available either freestanding or integrated
- Arctic white shower trays and baths in matt finish with sleek stainless steel waste cover. Built-in and freestanding baths are available
- RAK Ceramics Hygiene+ WC with RAKRimless™ pan and soft close ergonomic design seat
- Fascino Smart Shower and Smart Bath
- Heated chrome towel rails
- Choice of RAK Ceramics porcelain wall and floor tile colour with polished and matt finishes*
- Low-level LED strip lighting to bath

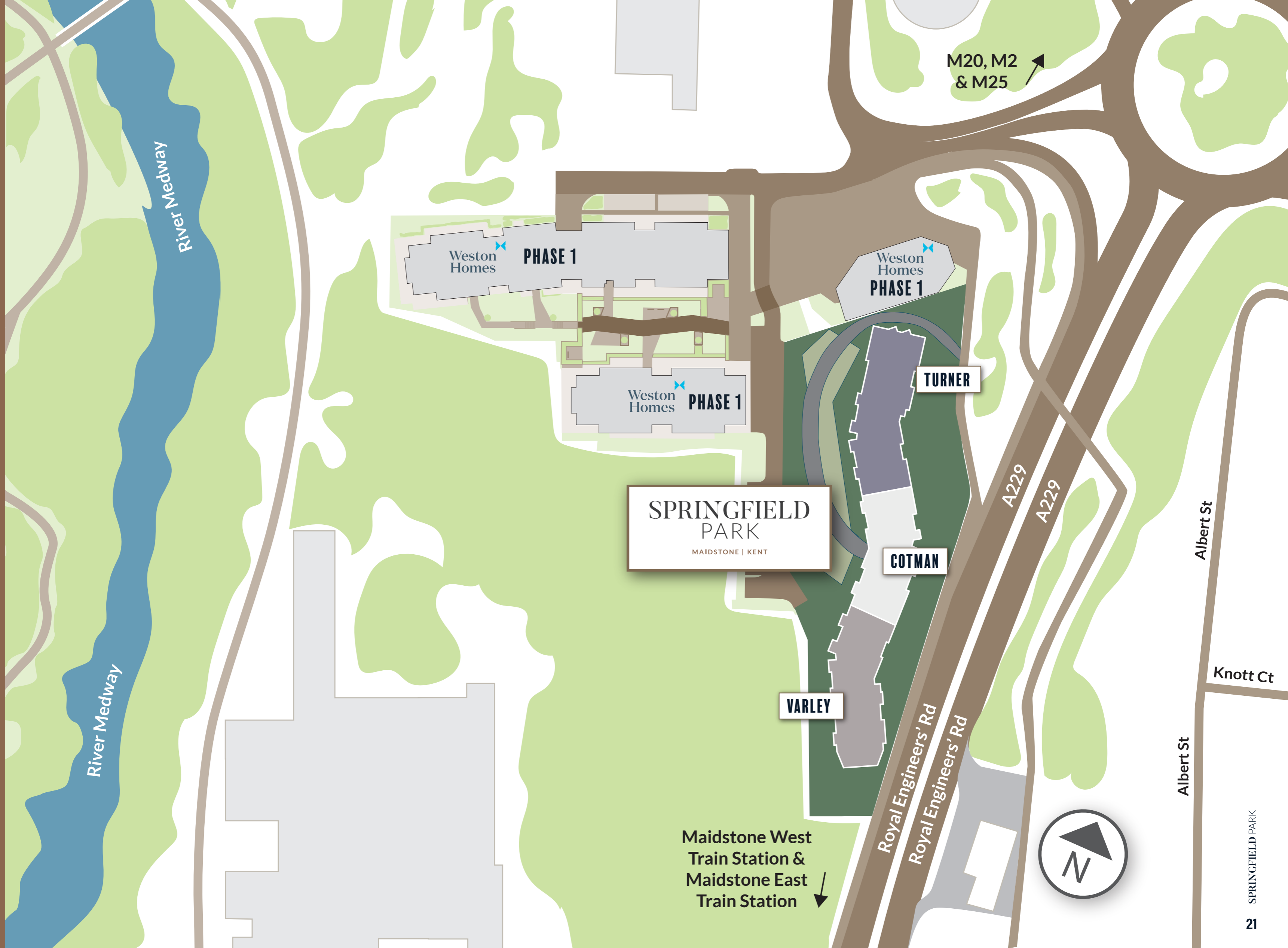
* Choices from developer's range and subject to stage of construction. Specifications are subject to change.

** Bespoke sets made up from the colours above are also available.





Computer generated image of Springfield Park



M20, M2 & M25

River Medway

Weston Homes PHASE 1

Weston Homes PHASE 1

Weston Homes PHASE 1

SPRINGFIELD PARK
MAIDSTONE | KENT

TURNER

COTMAN

VARLEY

A229

A229

Albert St

Knott Ct

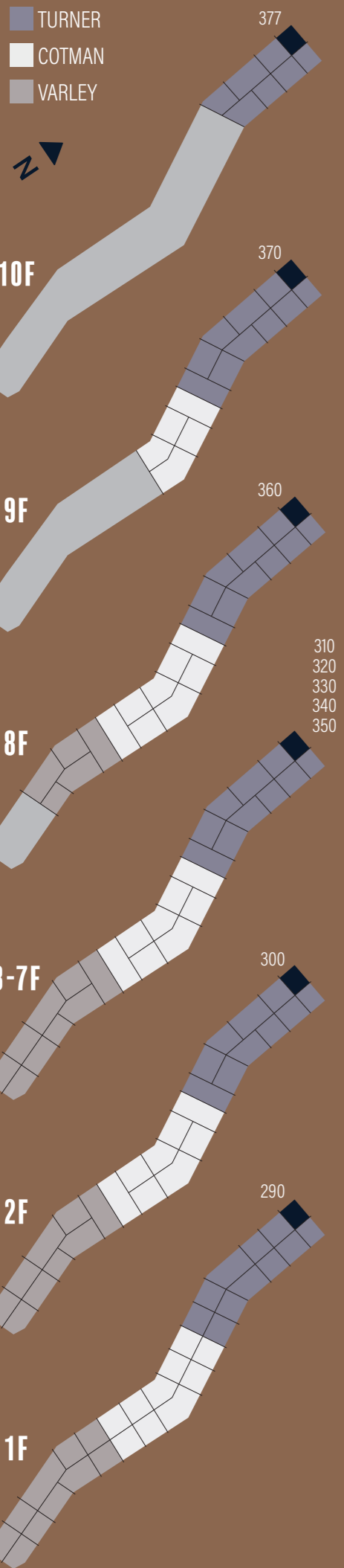
Albert St



Maidstone West Train Station & Maidstone East Train Station

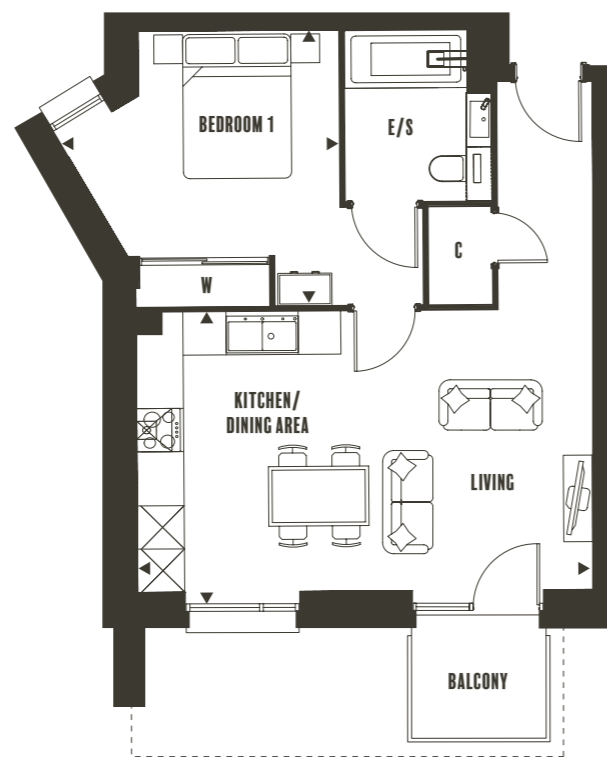


1 BEDROOM APARTMENTS



TYPE 1 1 BEDROOM

Total Internal Area **50 m² (538 ft²)**
Plots 290, 300, 310, 320, 330, 340, 350, 360, 370 & 377



KITCHEN/DINING/LIVING AREA
6.32m W x 3.91m H
(20'8" W x 12'10" H)

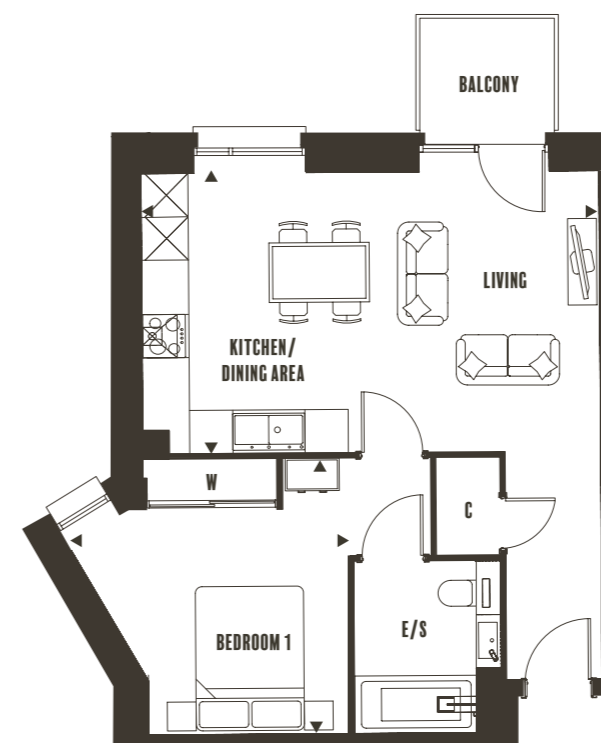
BEDROOM 1
3.92m W x 3.84m H
(12'10" W x 12'7" H)

Plot 290 has a Terrace instead of a Balcony, indicated by - - -

Floor plans, dimensions and configurations are included for guidance only, may be subject to revision during construction, please refer to current drawings with a Sales Consultant. Internal areas quoted are not inclusive of Balcony and Terrace areas. C -Cupboard, W - Wardrobe, E/S - En-Suite. Dimensions taken from ►

TYPE 2 1 BEDROOM

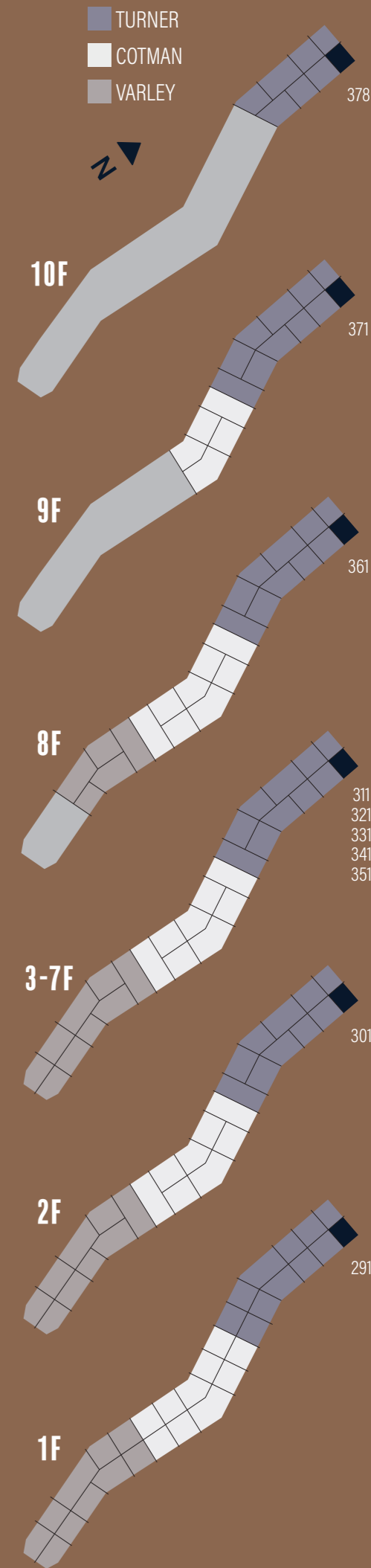
Total Internal Area **50 m² (538 ft²)**
Plots 291, 301, 311, 321, 331, 341, 351, 361, 371 & 378



KITCHEN/DINING/LIVING AREA
6.26m W x 3.91m H
(20'6" W x 12'10" H)

BEDROOM 1
3.92m W x 3.84m H
(12'10" W x 12'7" H)

Floor plans, dimensions and configurations are included for guidance only, may be subject to revision during construction, please refer to current drawings with a Sales Consultant. Internal areas quoted are not inclusive of Balcony and Terrace areas. C -Cupboard, W - Wardrobe, E/S - En-Suite. Dimensions taken from ►



TURNER
COTMAN
VARLEY



10F

9F

8F

3-7F

2F

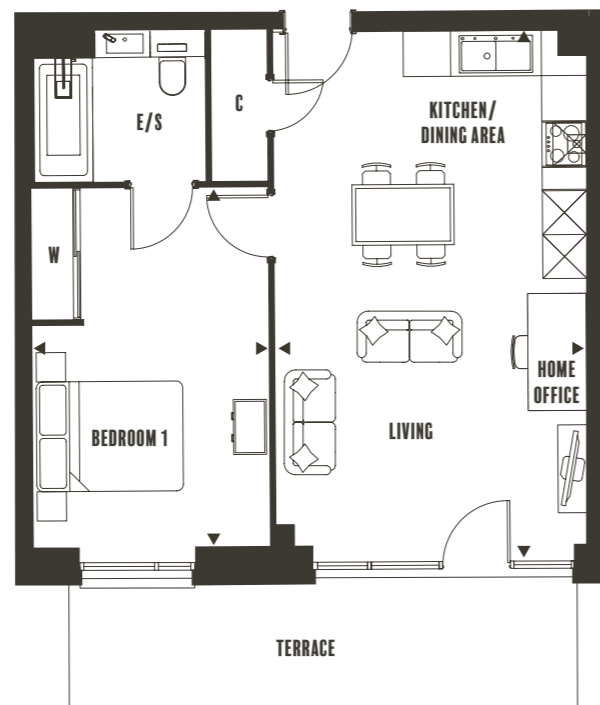
1F

289

TYPE 3A 1 BEDROOM

Total Internal Area **53 m² (575 ft²)**

Plot 289



KITCHEN/DINING/LIVING AREA

4.31m W x 7.09m H
(14'2" W x 23'3" H)

BEDROOM 1
3.21m W x 4.95m H
(10'6" W x 16'3" H)

Floor plans, dimensions and configurations are included for guidance only, may be subject to revision during construction, please refer to current drawings with a Sales Consultant. Internal areas quoted are not inclusive of Balcony and Terrace areas. C -Cupboard, W - Wardrobe, E/S - En-Suite. Dimensions taken from ►

TURNER
COTMAN
VARLEY



10F

9F

8F

3-7F

2F

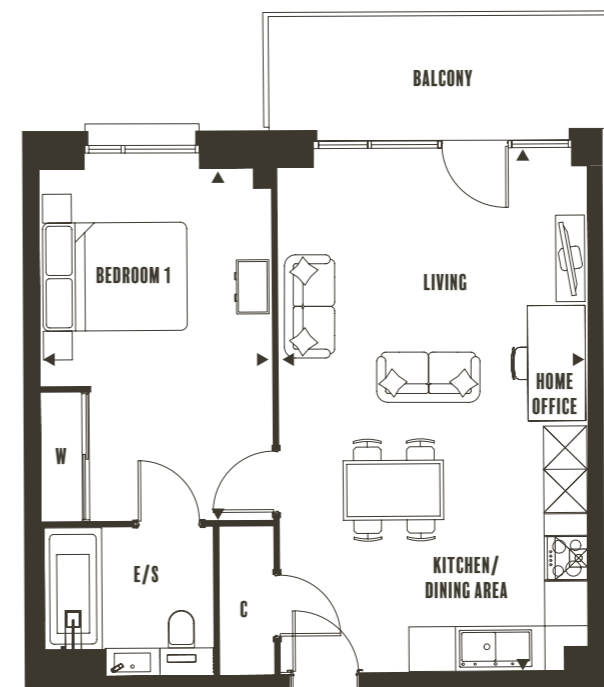
1F

292

TYPE 3B 1 BEDROOM

Total Internal Area **53 m² (575 ft²)**

Plot 292



KITCHEN/DINING/LIVING AREA

4.27m W x 7.01m H
(14' W x 22'9" H)

BEDROOM 1
3.18m W x 4.9m H
(10'4" W x 16'1" H)

Floor plans, dimensions and configurations are included for guidance only, may be subject to revision during construction, please refer to current drawings with a Sales Consultant. Internal areas quoted are not inclusive of Balcony and Terrace areas. C -Cupboard, W - Wardrobe, E/S - En-Suite. Dimensions taken from ►

TURNER
COTMAN
VARLEY



10F

9F

8F

3-7F

2F

1F

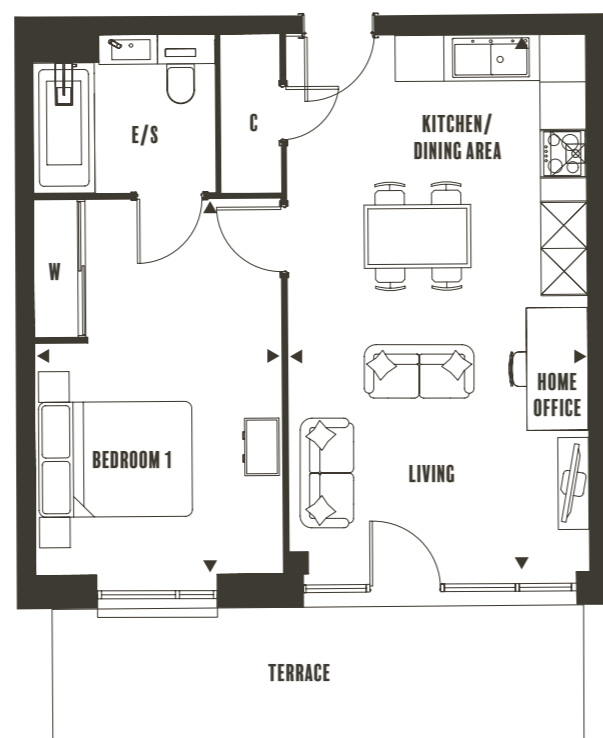
288

TYPE 4A

1 BEDROOM

Total Internal Area **51 m² (548 ft²)**

Plot 288



KITCHEN/DINING/LIVING AREA

3.95m W x 7.09m H
(13' W x 23'3" H)

BEDROOM 1

3.23m W x 4.95m H
(10'7" W x 16'3" H)

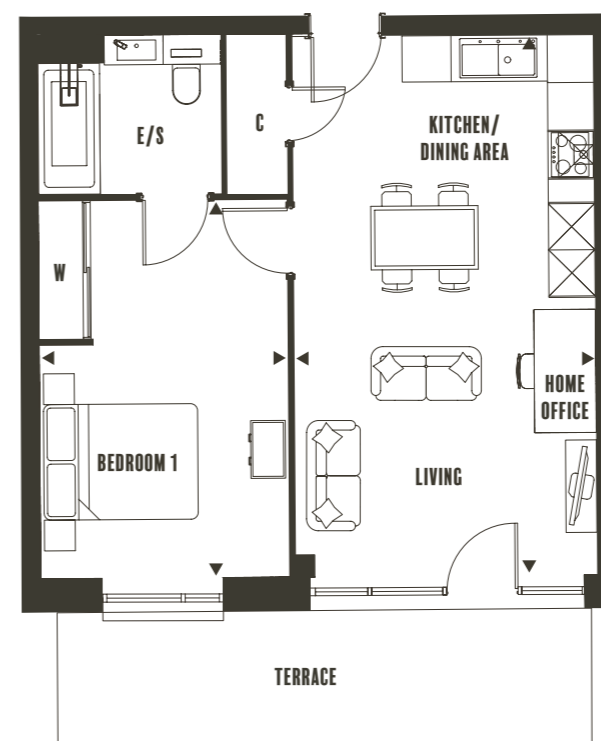
Floor plans, dimensions and configurations are included for guidance only, may be subject to revision during construction, please refer to current drawings with a Sales Consultant. Internal areas quoted are not inclusive of Balcony and Terrace areas. C - Cupboard, W - Wardrobe, E/S - En-Suite. Dimensions taken from ►

TYPE 4B

1 BEDROOM

Total Internal Area **51 m² (548 ft²)**

Plot 286



KITCHEN/DINING/LIVING AREA

3.93m W x 7.06m H
(12'11" W x 23'2" H)

BEDROOM 1

3.21m W x 4.95m H
(10'6" W x 16'3" H)

Floor plans, dimensions and configurations are included for guidance only, may be subject to revision during construction, please refer to current drawings with a Sales Consultant. Internal areas quoted are not inclusive of Balcony and Terrace areas. C - Cupboard, W - Wardrobe, E/S - En-Suite. Dimensions taken from ►

TURNER
COTMAN
VARLEY



10F

9F

8F

3-7F

2F

1F

286

TURNER
COTMAN
VARLEY



10F

9F

8F

3-7F

2F

1F

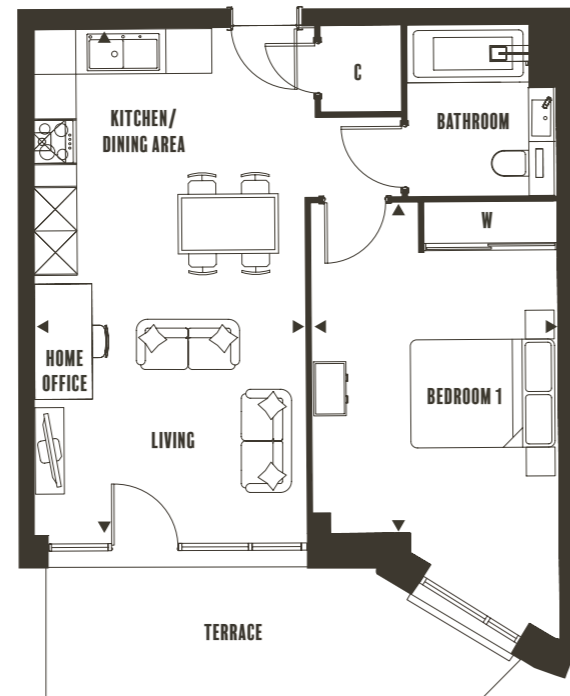
385

TYPE 4C

1 BEDROOM

Total Internal Area **51 m² (548 ft²)**

Plot 385



KITCHEN/DINING/LIVING AREA

3.74m W x 7.06m H
(12'3" W x 23'2" H)

BEDROOM 1
3.39m W x 4.59m H
(11'2" W x 15'1" H)

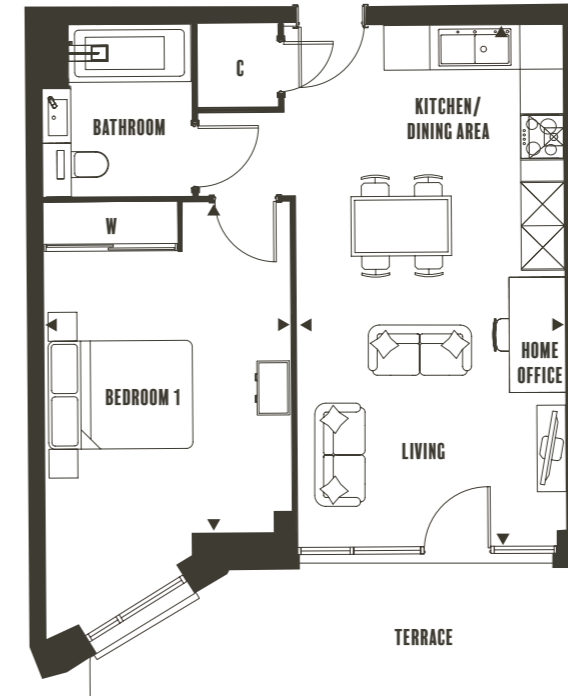
Floor plans, dimensions and configurations are included for guidance only, may be subject to revision during construction, please refer to current drawings with a Sales Consultant. Internal areas quoted are not inclusive of Balcony and Terrace areas. C - Cupboard, W - Wardrobe, E/S - En-Suite. Dimensions taken from ►

TYPE 4D

1 BEDROOM

Total Internal Area **51 m² (548 ft²)**

Plot 384



KITCHEN/DINING/LIVING AREA

3.74m W x 7.06m H
(12'3" W x 23'2" H)

BEDROOM 1
3.39m W x 4.59m H
(11'2" W x 15'1" H)

Floor plans, dimensions and configurations are included for guidance only, may be subject to revision during construction, please refer to current drawings with a Sales Consultant. Internal areas quoted are not inclusive of Balcony and Terrace areas. C - Cupboard, W - Wardrobe, E/S - En-Suite. Dimensions taken from ►

TURNER
COTMAN
VARLEY



10F

9F

8F

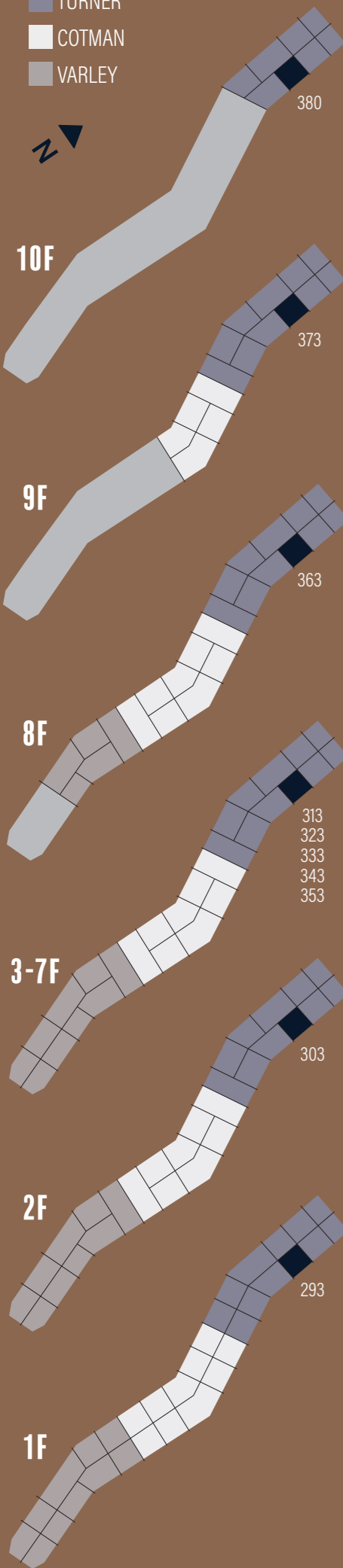
3-7F

2F

1F

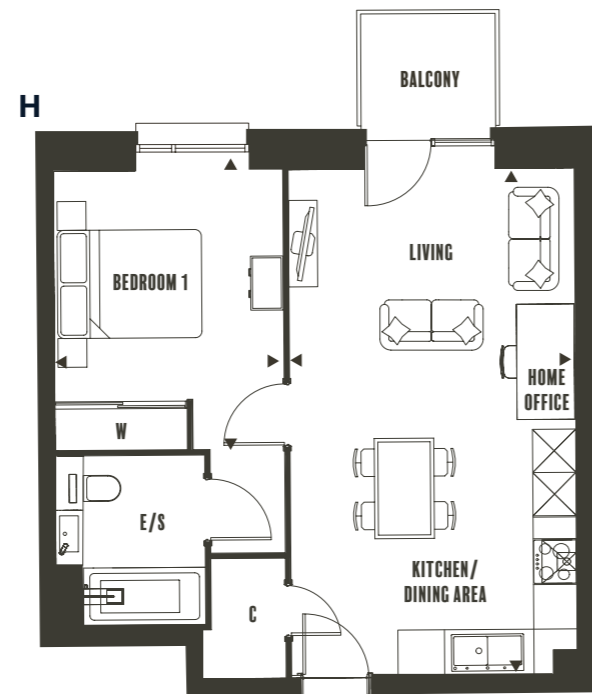
384

TURNER
COTMAN
VARLEY



TYPE 5 1 BEDROOM

Total Internal Area **50 m² (538 ft²)**
Plots 293, 303, 313, 323, 333, 343, 353, 363, 373 & 380



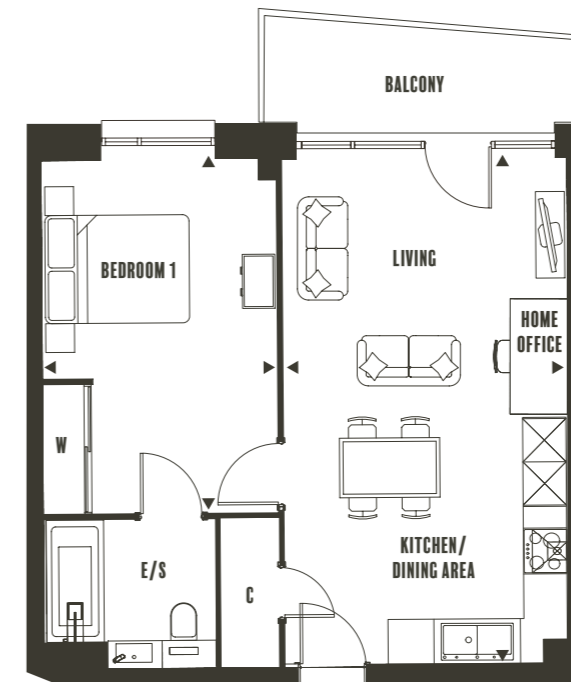
KITCHEN/DINING/LIVING AREA
3.98m W x 7.09m H
(13'1" W x 23'3" H)

BEDROOM 1
3.16m W x 3.93m H
(10'4" W x 12'11" H)

Floor plans, dimensions and configurations are included for guidance only, may be subject to revision during construction, please refer to current drawings with a Sales Consultant. Internal areas quoted are not inclusive of Balcony and Terrace areas. C -Cupboard, W - Wardrobe, E/S - En-Suite. Dimensions taken from ►

TYPE 7 1 BEDROOM

Total Internal Area **51 m² (554 ft²)**
Plot 283

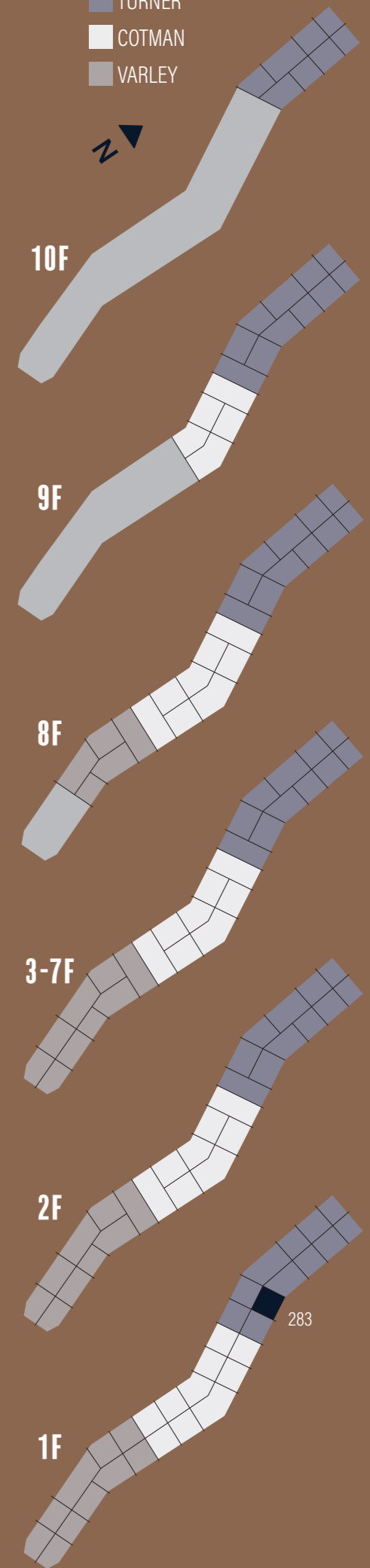


KITCHEN/DINING/LIVING AREA
3.91m W x 7.01m H
(12'10" W x 23' H)

BEDROOM 1
3.21m W x 4.90m H
(10'6" W x 16'1" H)

Floor plans, dimensions and configurations are included for guidance only, may be subject to revision during construction, please refer to current drawings with a Sales Consultant. Internal areas quoted are not inclusive of Balcony and Terrace areas. C -Cupboard, W - Wardrobe, E/S - En-Suite. Dimensions taken from ►

TURNER
COTMAN
VARLEY



TURNER
COTMAN
VARLEY



10F

9F

8F

3-7F

2F

1F

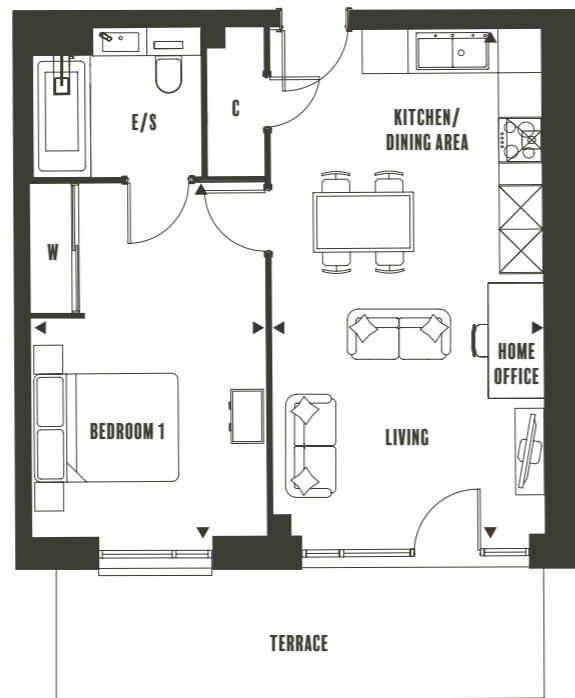
285

383

TYPE 8A 1 BEDROOM

Total Internal Area **50 m² (543 ft²)**

Plots 285 & 383



KITCHEN/DINING/LIVING AREA

3.78m W x 7.06m H
(12'5" W x 23'2" H)

BEDROOM 1

3.24m W x 4.91m H
(10'7" W x 16'1" H)

TURNER
COTMAN
VARLEY



10F

9F

8F

3-7F

2F

1F

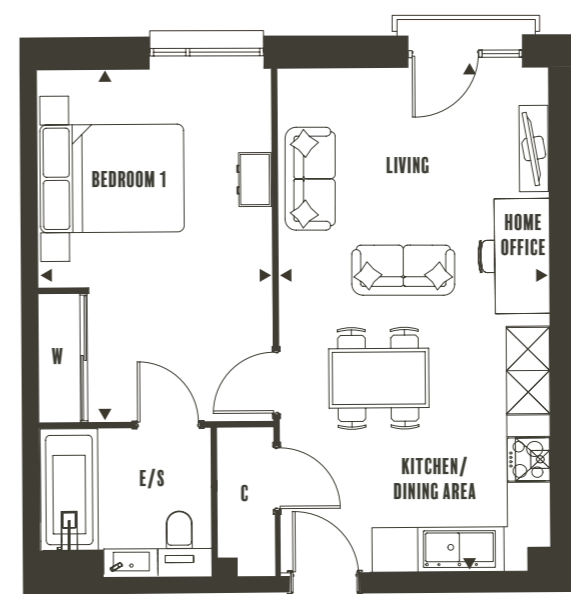
284

382

TYPE 8B 1 BEDROOM

Total Internal Area **50 m² (543 ft²)**

Plots 284 & 382



KITCHEN/DINING/LIVING AREA

3.78m W x 7.06m H
(12'5" W x 23'2" H)

BEDROOM 1

3.24m W x 4.95m H
(10'7" W x 16'3" H)

Plot 284 is window only & Plot 382 has a Juliet Balcony

Floor plans, dimensions and configurations are included for guidance only, may be subject to revision during construction, please refer to current drawings with a Sales Consultant. Internal areas quoted are not inclusive of Balcony and Terrace areas. C - Cupboard, W - Wardrobe, E/S - En-Suite. Dimensions taken from ►

Floor plans, dimensions and configurations are included for guidance only, may be subject to revision during construction, please refer to current drawings with a Sales Consultant. Internal areas quoted are not inclusive of Balcony and Terrace areas. C - Cupboard, W - Wardrobe, E/S - En-Suite. Dimensions taken from ►

TURNER
COTMAN
VARLEY



10F

9F

8F

3-7F

2F

1F

386

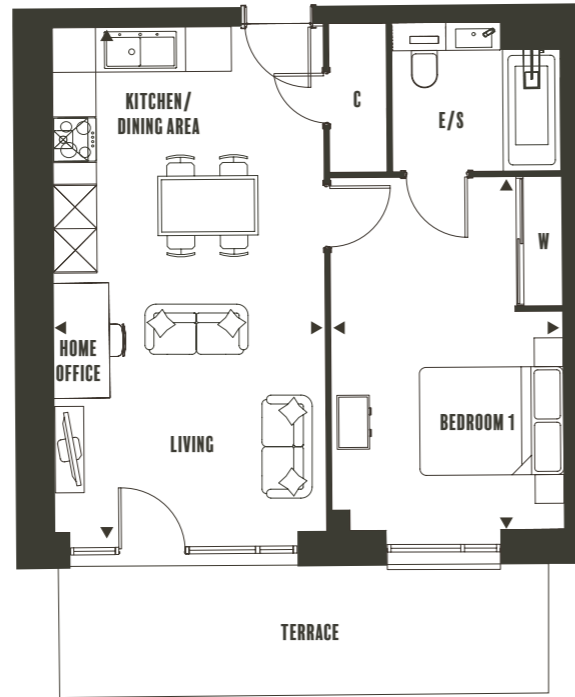
448

TYPE 8C

1 BEDROOM

Total Internal Area **50 m² (543 ft²)**

Plots 386 & 448



KITCHEN/DINING/LIVING AREA

3.81m W x 7.06m H
(12'6" W x 23'2" H)

BEDROOM 1

3.21m W x 4.95m H
(10'6" W x 16'3" H)

TURNER
COTMAN
VARLEY



10F

9F

8F

3-7F

2F

1F

387

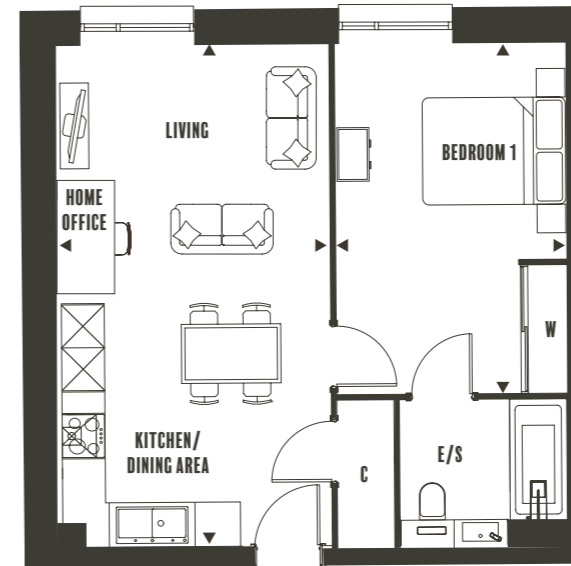
449

TYPE 8D

1 BEDROOM

Total Internal Area **50 m² (543 ft²)**

Plots 387 & 449



KITCHEN/DINING/LIVING AREA

3.78m W x 7.06m H
(12'5" W x 23'2" H)

BEDROOM 1

3.24m W x 4.95m H
(10'7" W x 16'3" H)

Plot 387 is window only & Plot 449 has a Juliet Balcony

Floor plans, dimensions and configurations are included for guidance only, may be subject to revision during construction, please refer to current drawings with a Sales Consultant. Internal areas quoted are not inclusive of Balcony and Terrace areas. C - Cupboard, W - Wardrobe, E/S - En-Suite. Dimensions taken from ►

Floor plans, dimensions and configurations are included for guidance only, may be subject to revision during construction, please refer to current drawings with a Sales Consultant. Internal areas quoted are not inclusive of Balcony and Terrace areas. C - Cupboard, W - Wardrobe, E/S - En-Suite. Dimensions taken from ►

TURNER
COTMAN
VARLEY



10F

9F

8F

3-7F

2F

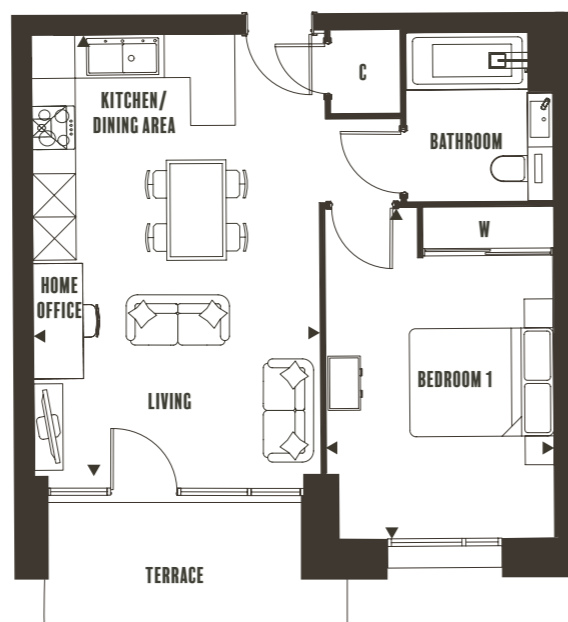
1F

447

TYPE 15 1 BEDROOM

Total Internal Area **47 m² (511 ft²)**

Plot 447



KITCHEN/DINING/LIVING AREA

3.99m W x 6.16m H
(13'1" W x 20'2" H)

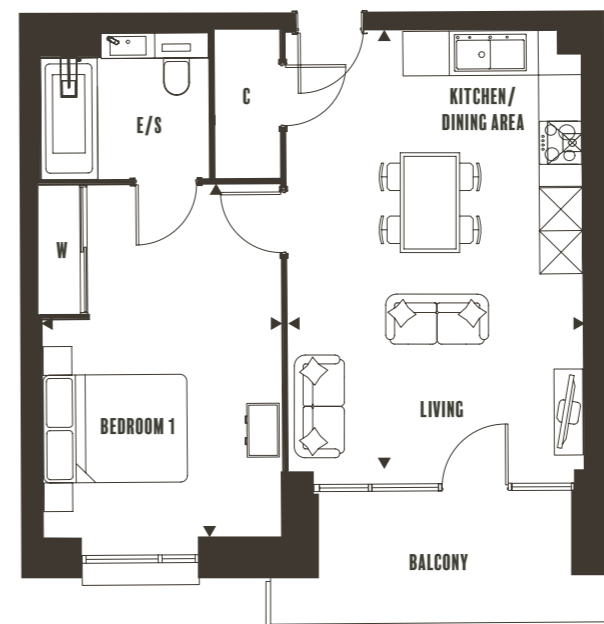
BEDROOM 1
3.15m W x 4.63m H
(10'4" W x 15'2" H)

Floor plans, dimensions and configurations are included for guidance only, may be subject to revision during construction, please refer to current drawings with a Sales Consultant. Internal areas quoted are not inclusive of Balcony and Terrace areas. C - Cupboard, W - Wardrobe, E/S - En-Suite. Dimensions taken from ►

TYPE 16A 1 BEDROOM

Total Internal Area **50 m² (538 ft²)**

Plots 299, 309, 319, 329, 339, 349, 359, 369 & 376



KITCHEN/DINING/LIVING AREA

4.14m W x 6.16m H
(13'7" W x 20'2" H)

BEDROOM 1
3.35m W x 4.95m H
(11' W x 16'3" H)

Floor plans, dimensions and configurations are included for guidance only, may be subject to revision during construction, please refer to current drawings with a Sales Consultant. Internal areas quoted are not inclusive of Balcony and Terrace areas. C - Cupboard, W - Wardrobe, E/S - En-Suite. Dimensions taken from ►

TURNER
COTMAN
VARLEY



10F

9F

8F

3-7F

2F

1F

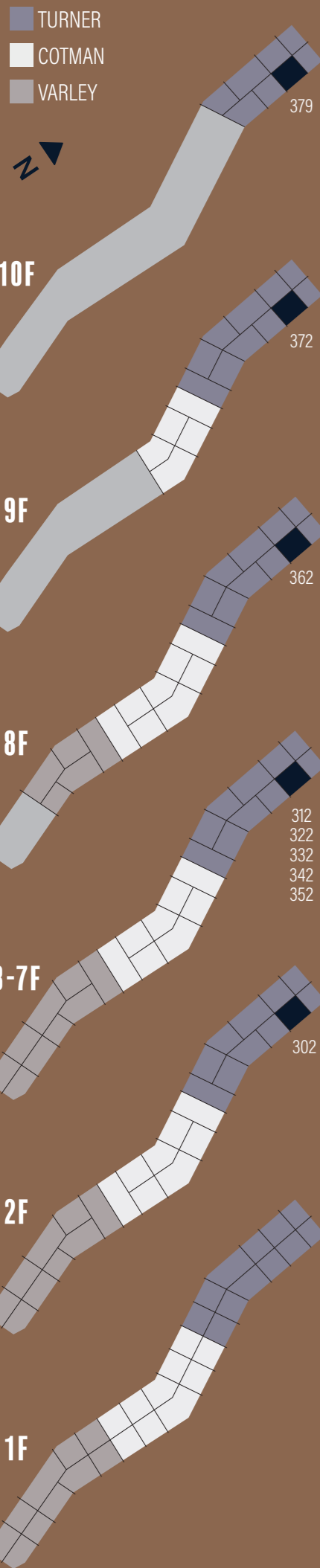
376

369

359

309
319
329
339
349

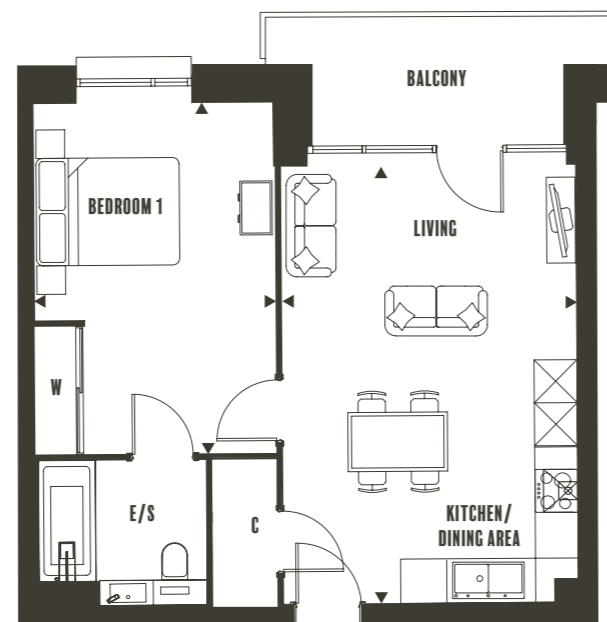
299



TYPE 16B

1 BEDROOM

Total Internal Area **50 m² (538 ft²)**
 Plots 302, 312, 322, 332, 342, 352, 362, 372 & 379



KITCHEN/DINING/LIVING AREA
4.14m W x 6.16m H
 (13'7" W x 20'2" H)

BEDROOM 1
3.35m W x 4.95m H
 (11' W x 16'3" H)

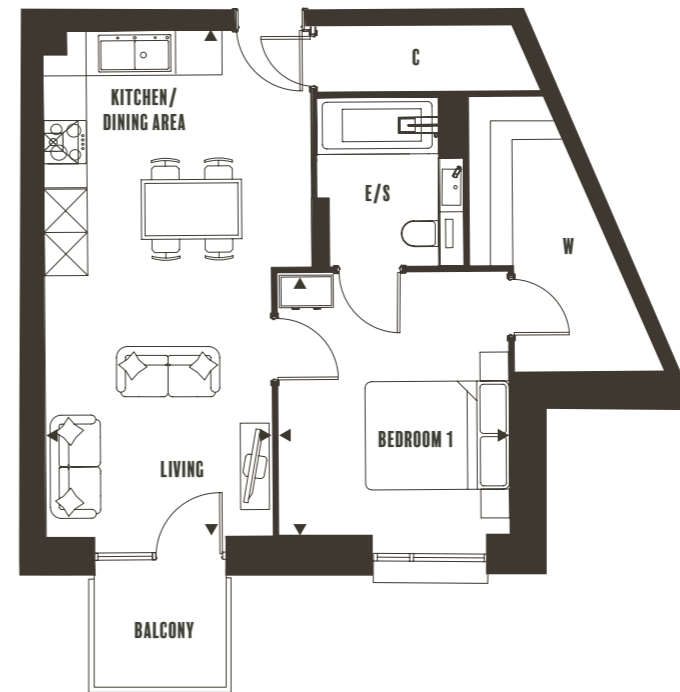
Plot 302 has a Terrace instead of a Balcony

Floor plans, dimensions and configurations are included for guidance only, may be subject to revision during construction, please refer to current drawings with a Sales Consultant. Internal areas quoted are not inclusive of Balcony and Terrace areas. C - Cupboard, W - Wardrobe, E/S - En-Suite. Dimensions taken from ►

TYPE 17

1 BEDROOM

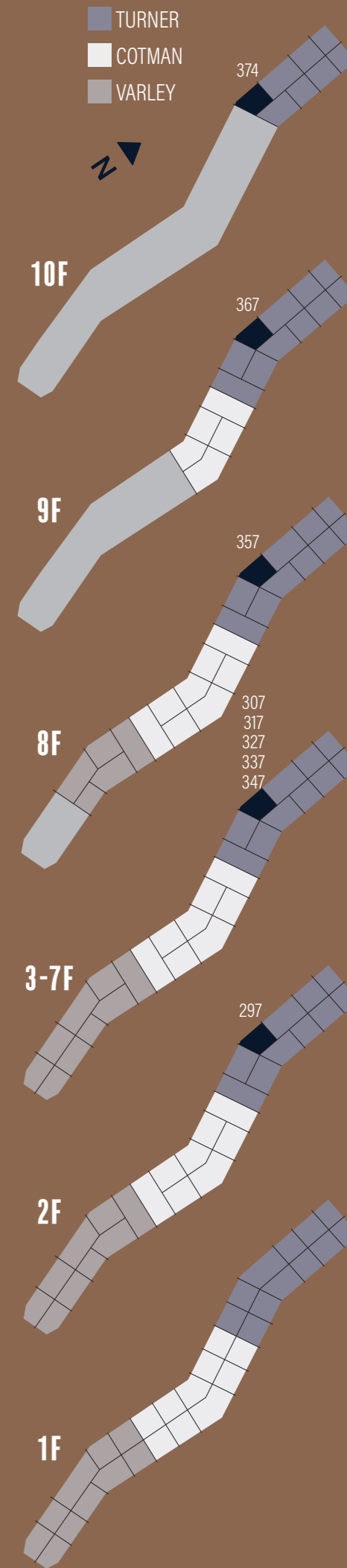
Total Internal Area **51 m² (548 ft²)**
 Plots 297, 307, 317, 327, 337, 347, 357, 367 & 374



KITCHEN/DINING/LIVING AREA
3.16m W x 7.06m H
 (10'5" W x 23'2" H)

BEDROOM 1
3.2m W x 3.67m H
 (10'7" W x 12' H)

Floor plans, dimensions and configurations are included for guidance only, may be subject to revision during construction, please refer to current drawings with a Sales Consultant. Internal areas quoted are not inclusive of Balcony and Terrace areas. C - Cupboard, W - Wardrobe, E/S - En-Suite. Dimensions taken from ►



TURNER
COTMAN
VARLEY



10F

9F

8F

3-7F

2F

1F

364

354

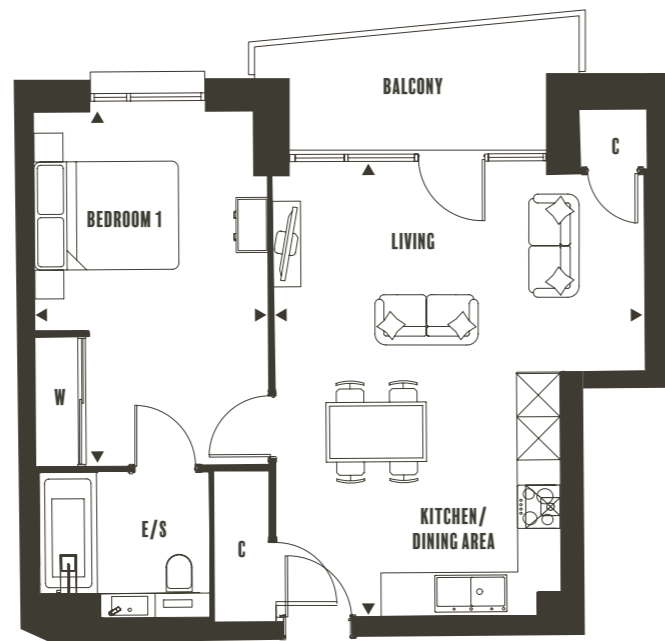
304
314
324
334
344

294

TYPE 18 1 BEDROOM

Total Internal Area **52 m² (559 ft²)**

Plots 294, 304, 314, 324, 334, 344, 354 & 364



KITCHEN/DINING/LIVING AREA

5.15m W x 6.16m H
(16'11" W x 20'2" H)

BEDROOM 1
3.17m W x 4.91m H
(10'5" W x 16'1" H)

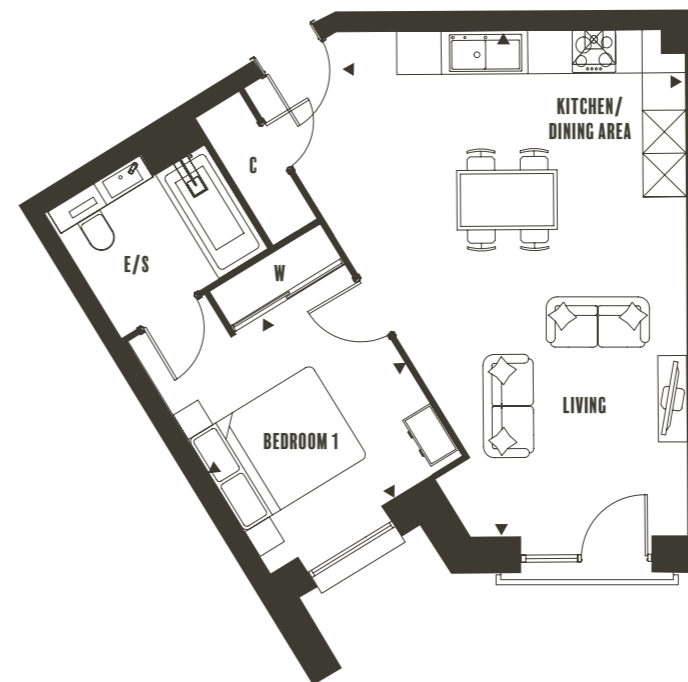
Plot 294 has a Terrace instead of a Balcony

Floor plans, dimensions and configurations are included for guidance only, may be subject to revision during construction, please refer to current drawings with a Sales Consultant. Internal areas quoted are not inclusive of Balcony and Terrace areas. C - Cupboard, W - Wardrobe, E/S - En-Suite. Dimensions taken from ►

TYPE 21 1 BEDROOM

Total Internal Area **51 m² (548 ft²)**

Plots 392, 399, 406, 413, 420, 427, 434 & 438



KITCHEN/DINING/LIVING AREA

4.50m W x 7.02m H
(14'9" W x 23'1" H)

BEDROOM 1
3.17m W x 3.78m H
(10'4" W x 12'4" H)

All Plots have a Juliet Balcony

Floor plans, dimensions and configurations are included for guidance only, may be subject to revision during construction, please refer to current drawings with a Sales Consultant. Internal areas quoted are not inclusive of Balcony and Terrace areas. C - Cupboard, W - Wardrobe, E/S - En-Suite. Dimensions taken from ►

TURNER
COTMAN
VARLEY



10F

9F

8F

3-7F

2F

1F

438

434

399
406
413
420
427

392



2 BEDROOM APARTMENTS

TURNER
COTMAN
VARLEY



10F

9F

8F

3-7F

2F

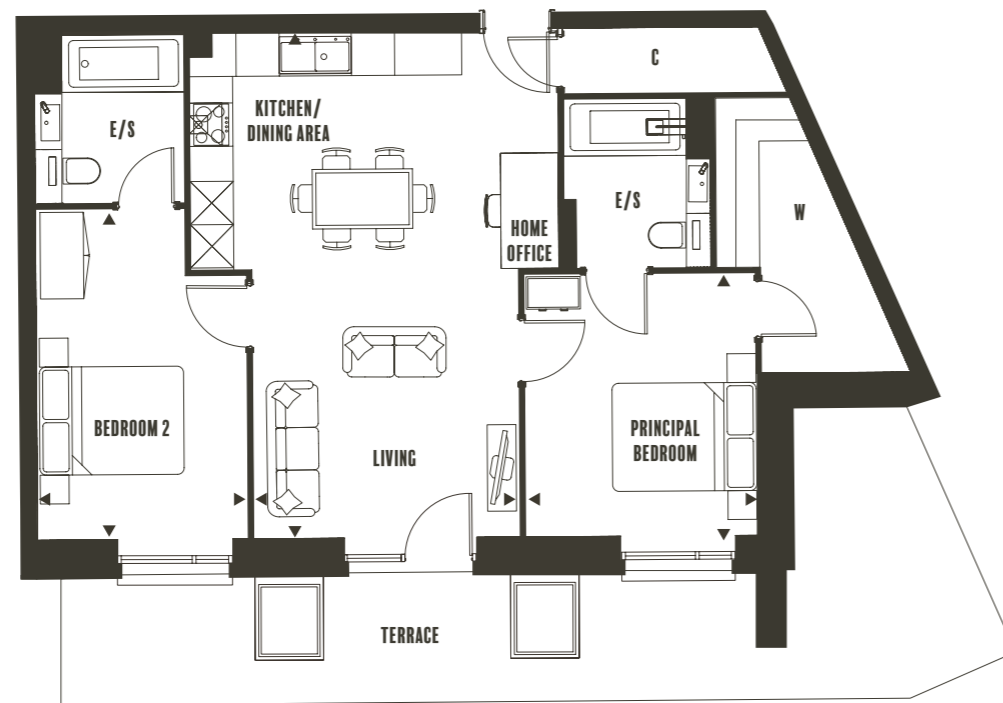
1F

287

TYPE 6 2 BEDROOM

Total Internal Area **76 m² (818 ft²)**

Plot 287



KITCHEN/DINING/LIVING AREA

3.70m W x 7.02m H
(12'2" W x 23' H)

PRINCIPAL BEDROOM

3.27m W x 3.67m H
(10'9" W x 12' H)

BEDROOM 2

2.90m W x 4.59m H
(9'6" W x 15'1" H)

TURNER
COTMAN
VARLEY



10F

9F

8F

3-7F

2F

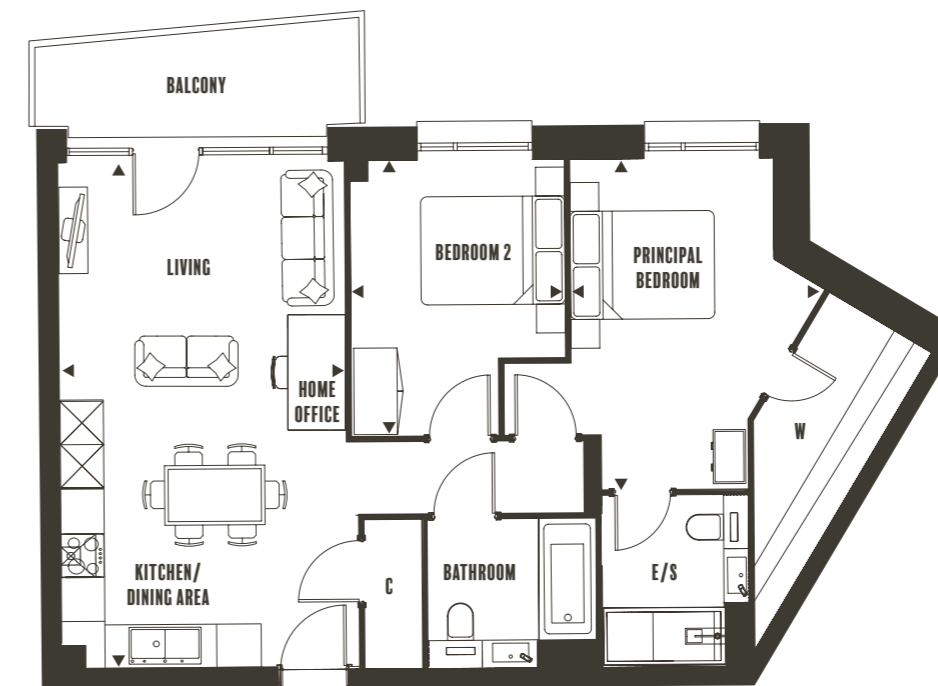
1F

388

TYPE 9 2 BEDROOM

Total Internal Area **75 m² (812 ft²)**

Plot 388



KITCHEN/DINING/LIVING AREA

3.98m W x 7.01m H
(13'1" W x 23' H)

PRINCIPAL BEDROOM

3.54m W x 4.61m H
(11'7" W x 15'1" H)

BEDROOM 2

2.98m W x 3.85m H
(9'9" W x 12'8" H)

Floor plans, dimensions and configurations are included for guidance only, may be subject to revision during construction, please refer to current drawings with a Sales Consultant. Internal areas quoted are not inclusive of Balcony and Terrace areas. C - Cupboard, W - Wardrobe, E/S - En-Suite. Dimensions taken from ▶

Floor plans, dimensions and configurations are included for guidance only, may be subject to revision during construction, please refer to current drawings with a Sales Consultant. Internal areas quoted are not inclusive of Balcony and Terrace areas. C - Cupboard, W - Wardrobe, E/S - En-Suite. Dimensions taken from ▶

TURNER
COTMAN
VARLEY



10F

9F

8F

3-7F

2F

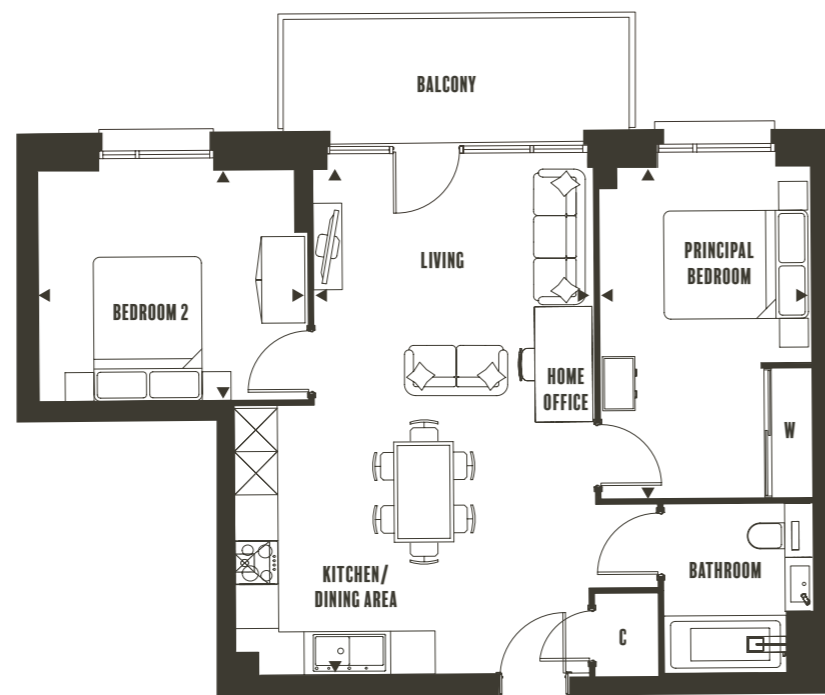
1F

381

TYPE 10 2 BEDROOM

Total Internal Area **65 m² (705 ft²)**

Plot 381



KITCHEN/DINING/LIVING AREA

3.89m W x 7.01m H
(12'9" W x 22'9" H)

PRINCIPAL BEDROOM

2.91m W x 4.63m H
(9'7" W x 15'2" H)

BEDROOM 2

3.79m W x 3.23m H
(12'5" W x 10'7" H)

TURNER
COTMAN
VARLEY



10F

9F

8F

3-7F

2F

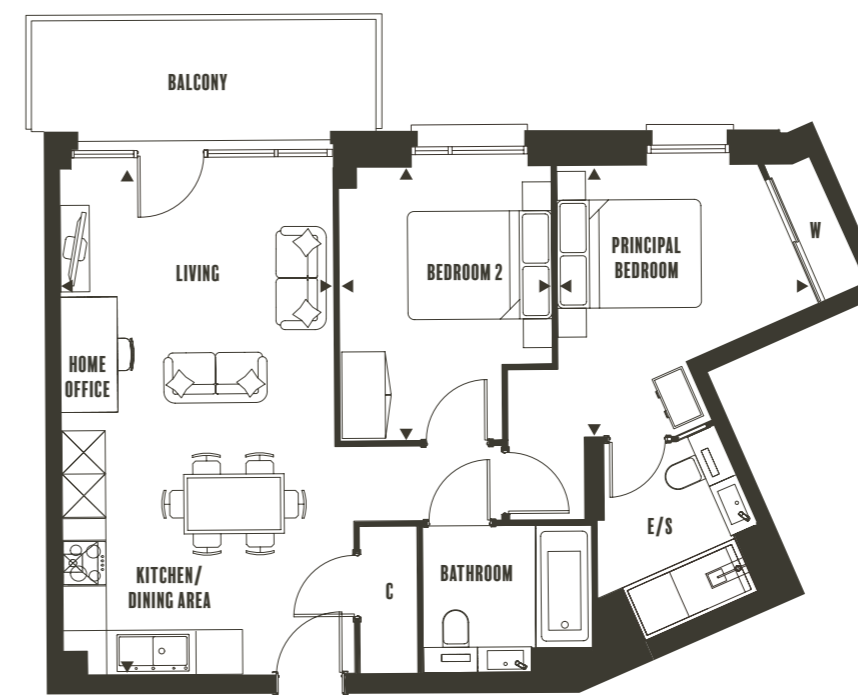
1F

450

TYPE 11 2 BEDROOM

Total Internal Area **68 m² (731 ft²)**

Plot 450



KITCHEN/DINING/LIVING AREA

3.80m W x 7.06m H
(12'6" W x 23'2" H)

PRINCIPAL BEDROOM

3.50m W x 3.79m H
(11'6" W x 12'5" H)

BEDROOM 2

2.95m W x 3.82m H
(9'8" W x 12'6" H)

Floor plans, dimensions and configurations are included for guidance only, may be subject to revision during construction, please refer to current drawings with a Sales Consultant. Internal areas quoted are not inclusive of Balcony and Terrace areas. C - Cupboard, W - Wardrobe, E/S - En-Suite. Dimensions taken from ►

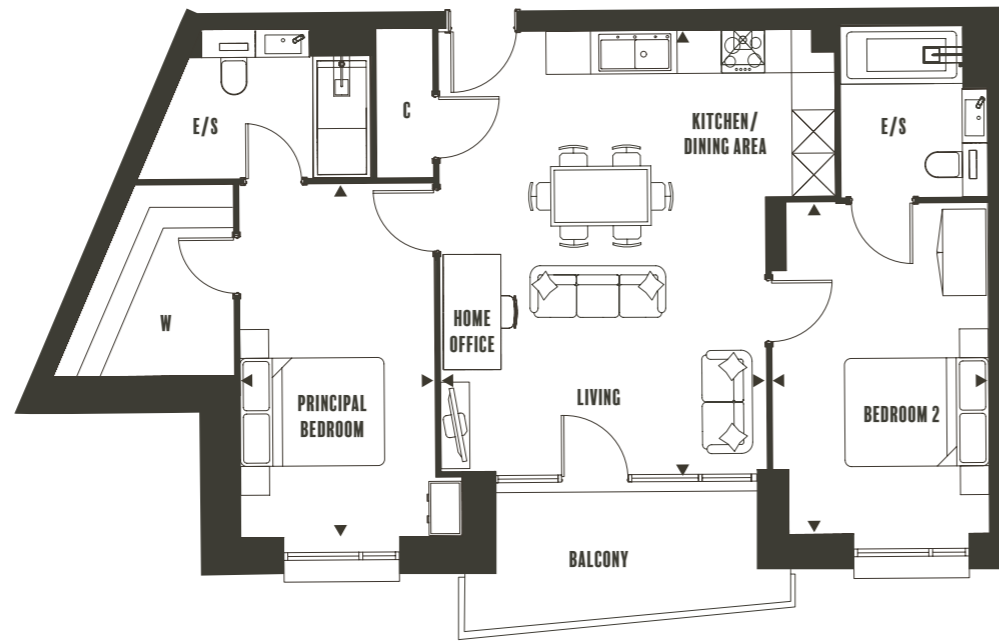
Floor plans, dimensions and configurations are included for guidance only, may be subject to revision during construction, please refer to current drawings with a Sales Consultant. Internal areas quoted are not inclusive of Balcony and Terrace areas. C - Cupboard, W - Wardrobe, E/S - En-Suite. Dimensions taken from ►

TURNER
COTMAN
VARLEY

TYPE 12 2 BEDROOM

Total Internal Area **77 m² (834 ft²)**

Plots 446, 455, 463, 471, 479, 487, 495 & 499



KITCHEN/DINING/LIVING AREA

4.56m W x 6.11m H
(15' W x 20' H)

PRINCIPAL BEDROOM

2.70m W x 4.90m H
(8'10" W x 16'1" H)

BEDROOM 2

2.99m W x 4.63m H
(9'10" W x 15'2" H)

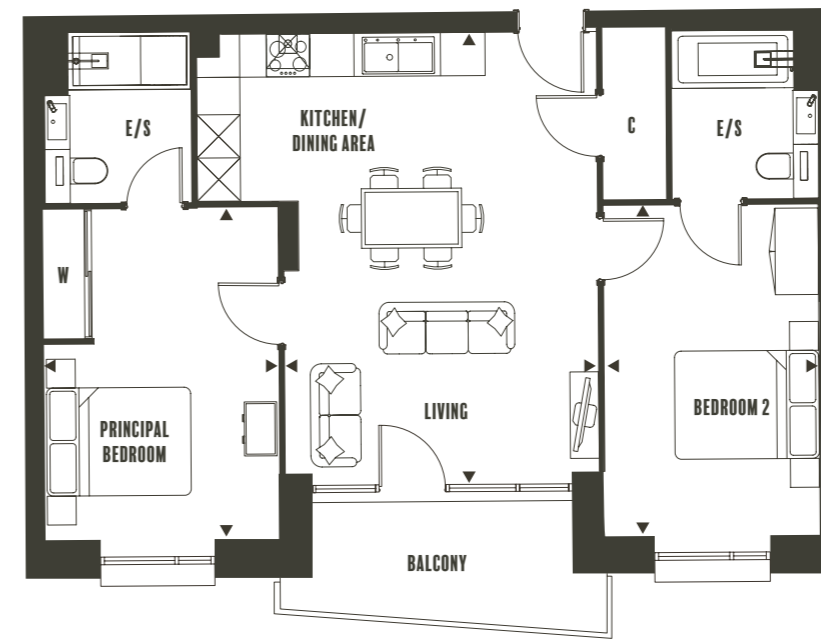
Plot 446 has a Terrace instead of a Balcony

Floor plans, dimensions and configurations are included for guidance only, may be subject to revision during construction, please refer to current drawings with a Sales Consultant. Internal areas quoted are not inclusive of Balcony and Terrace areas. C - Cupboard, W - Wardrobe, E/S - En-Suite. Dimensions taken from ▶

TYPE 13A 2 BEDROOM

Total Internal Area **72 m² (775 ft²)**

Plots 393, 400, 407, 414, 421, 428, 435, 439, 456, 464, 472, 480, 488, 496 & 500



KITCHEN/DINING/LIVING AREA

4.36m W x 6.10m H
(14'4" W x 20' H)

PRINCIPAL BEDROOM

3.22m W x 4.63m H
(10'6" W x 15'2" H)

BEDROOM 2

2.98m W x 4.59m H
(9'9" W x 15'1" H)

Plot 393 has a Terrace instead of a Balcony

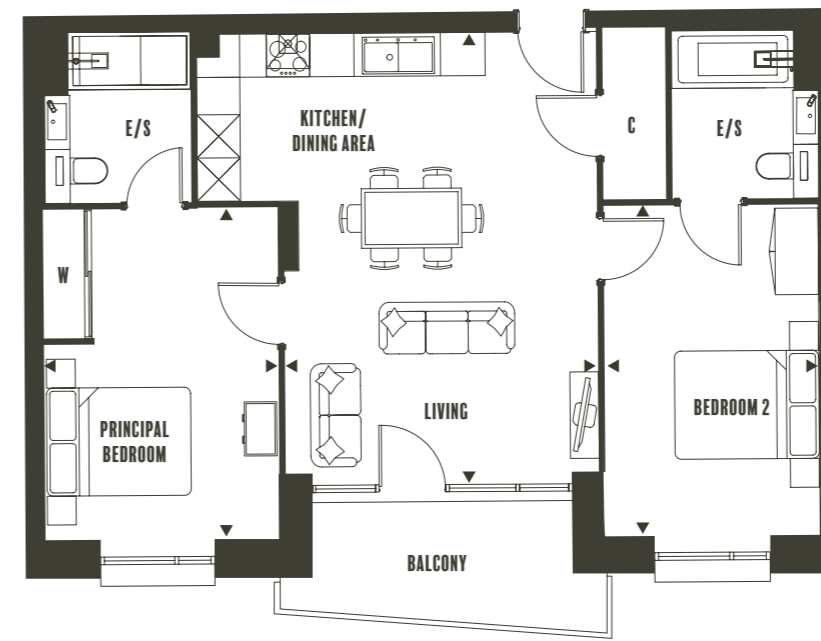
Floor plans, dimensions and configurations are included for guidance only, may be subject to revision during construction, please refer to current drawings with a Sales Consultant. Internal areas quoted are not inclusive of Balcony and Terrace areas. C - Cupboard, W - Wardrobe, E/S - En-Suite. Dimensions taken from ▶

TURNER
COTMAN
VARLEY

TYPE 13A 2 BEDROOM

Total Internal Area **72 m² (775 ft²)**

Plots 393, 400, 407, 414, 421, 428, 435, 439, 456, 464, 472, 480, 488, 496 & 500



KITCHEN/DINING/LIVING AREA

4.36m W x 6.10m H
(14'4" W x 20' H)

PRINCIPAL BEDROOM

3.22m W x 4.63m H
(10'6" W x 15'2" H)

BEDROOM 2

2.98m W x 4.59m H
(9'9" W x 15'1" H)

Plot 393 has a Terrace instead of a Balcony

Floor plans, dimensions and configurations are included for guidance only, may be subject to revision during construction, please refer to current drawings with a Sales Consultant. Internal areas quoted are not inclusive of Balcony and Terrace areas. C - Cupboard, W - Wardrobe, E/S - En-Suite. Dimensions taken from ▶

TURNER
COTMAN
VARLEY



10F

9F

8F

3-7F

459
467
475
483
491

2F

451

1F

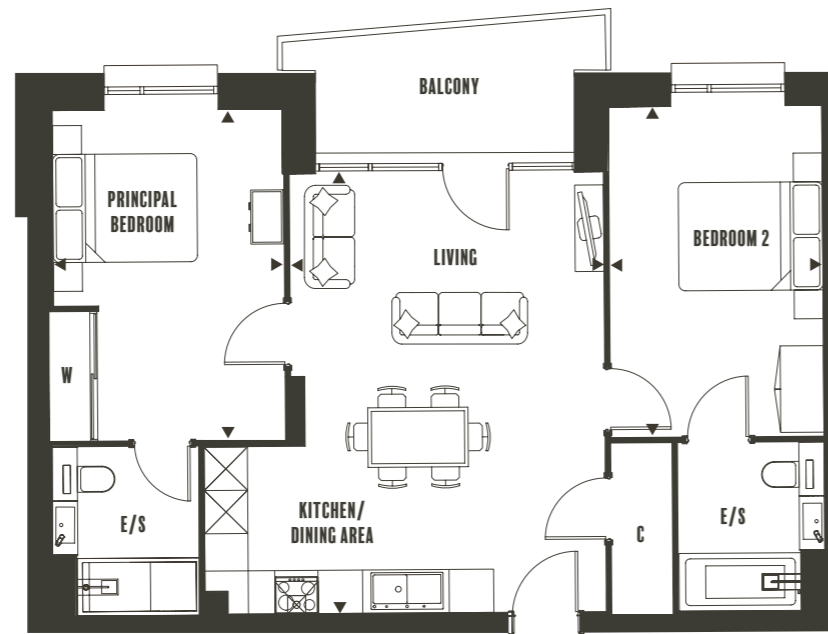
442

TYPE 13B

2 BEDROOM

Total Internal Area **72 m² (775 ft²)**

Plots 442, 451, 459, 467, 475, 483 & 491



KITCHEN/DINING/LIVING AREA

4.35m W x 6.11m H
(14'3" W x 20' H)

PRINCIPAL BEDROOM

3.21m W x 4.63m H
(10'5" W x 15'2" H)

BEDROOM 2

2.90m W x 4.63m H
(9'6" W x 15'2" H)

Plot 442 has a Terrace instead of a Balcony

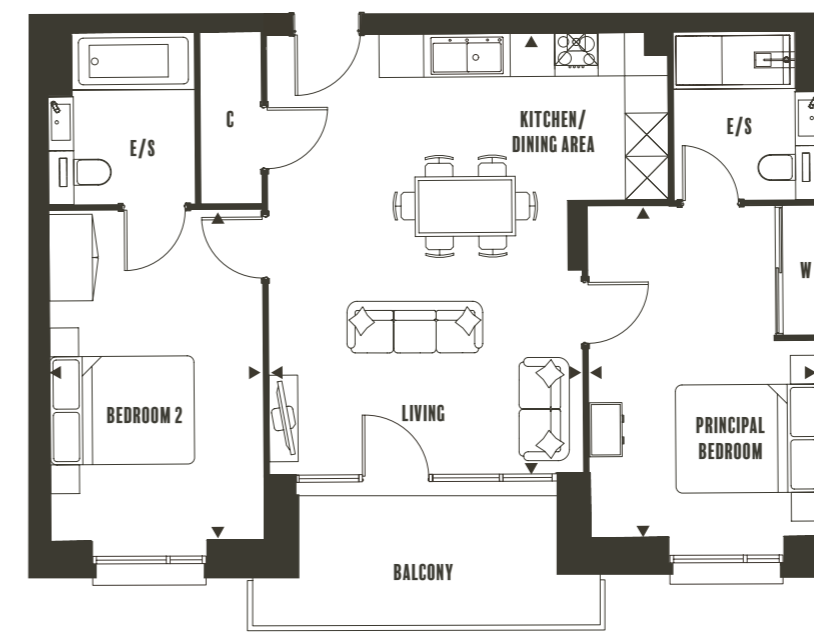
Floor plans, dimensions and configurations are included for guidance only, may be subject to revision during construction, please refer to current drawings with a Sales Consultant. Internal areas quoted are not inclusive of Balcony and Terrace areas. C -Cupboard, W - Wardrobe, E/S - En-Suite. Dimensions taken from ►

TYPE 13C

2 BEDROOM

Total Internal Area **72 m² (775 ft²)**

Plots 298, 308, 318, 328, 338, 348, 358, 368, 375, 391, 398, 405, 412, 419, 426 & 433



KITCHEN/DINING/LIVING AREA

4.35m W x 6.11m H
(14'3" W x 20' H)

PRINCIPAL BEDROOM

3.28m W x 4.63m H
(10'7" W x 15'2" H)

BEDROOM 2

2.90m W x 4.63m H
(9'6" W x 15'2" H)

Plots 298 & 391 have a Terrace instead of a Balcony

Floor plans, dimensions and configurations are included for guidance only, may be subject to revision during construction, please refer to current drawings with a Sales Consultant. Internal areas quoted are not inclusive of Balcony and Terrace areas. C -Cupboard, W - Wardrobe, E/S - En-Suite. Dimensions taken from ►

TURNER
COTMAN
VARLEY



10F

9F

8F

3-7F

433
308
318
328
338
348

398
405
412
419
426

2F

391

1F

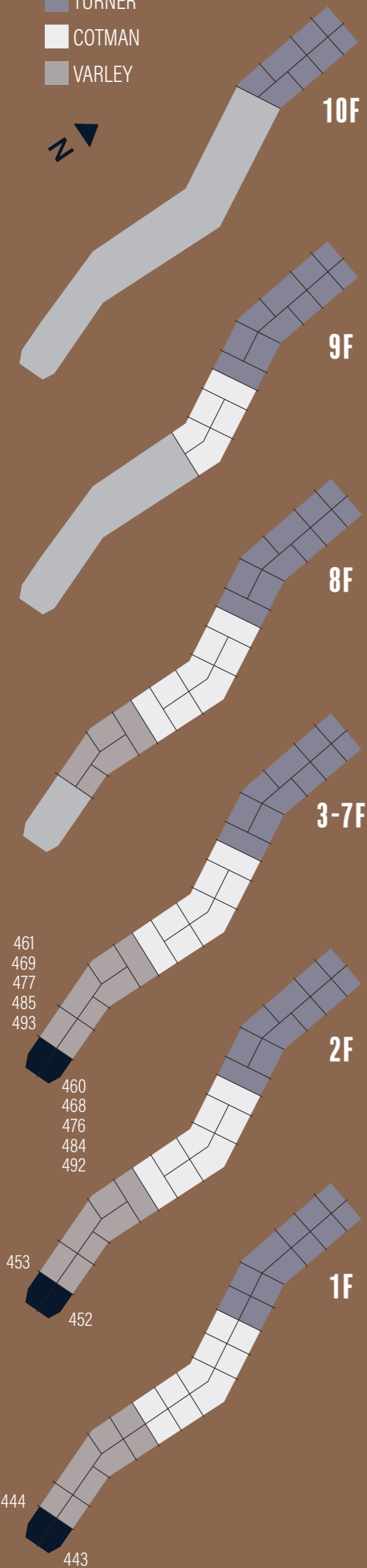
375

368

358

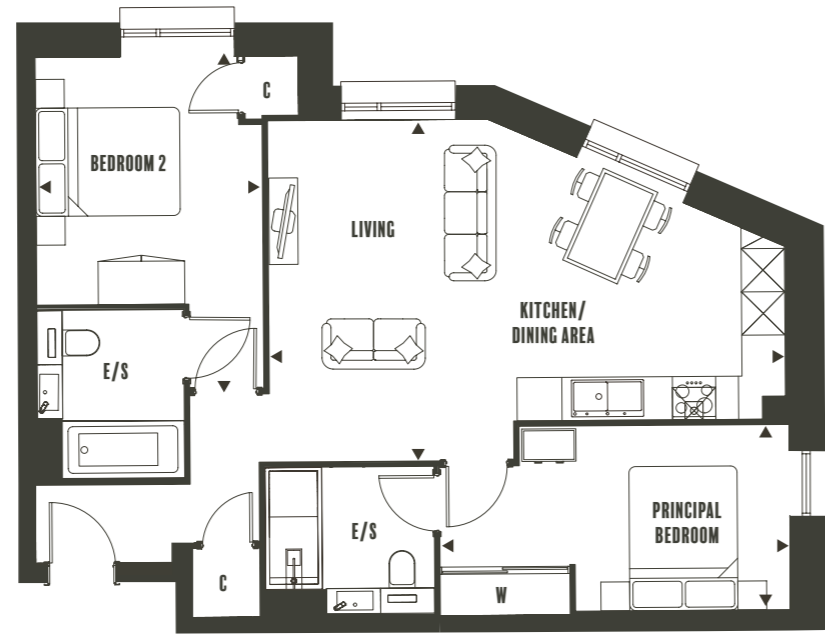
298

TURNER
COTMAN
VARLEY



TYPE 14 2 BEDROOM

Total Internal Area **70 m² (753 ft²)**
Plots 443, 444, 452, 453, 460, 461, 468, 469, 476, 477, 484, 485, 492 & 493



KITCHEN/DINING/LIVING AREA
7.23m W x 4.73m H
(23'9" W x 15'6" H)

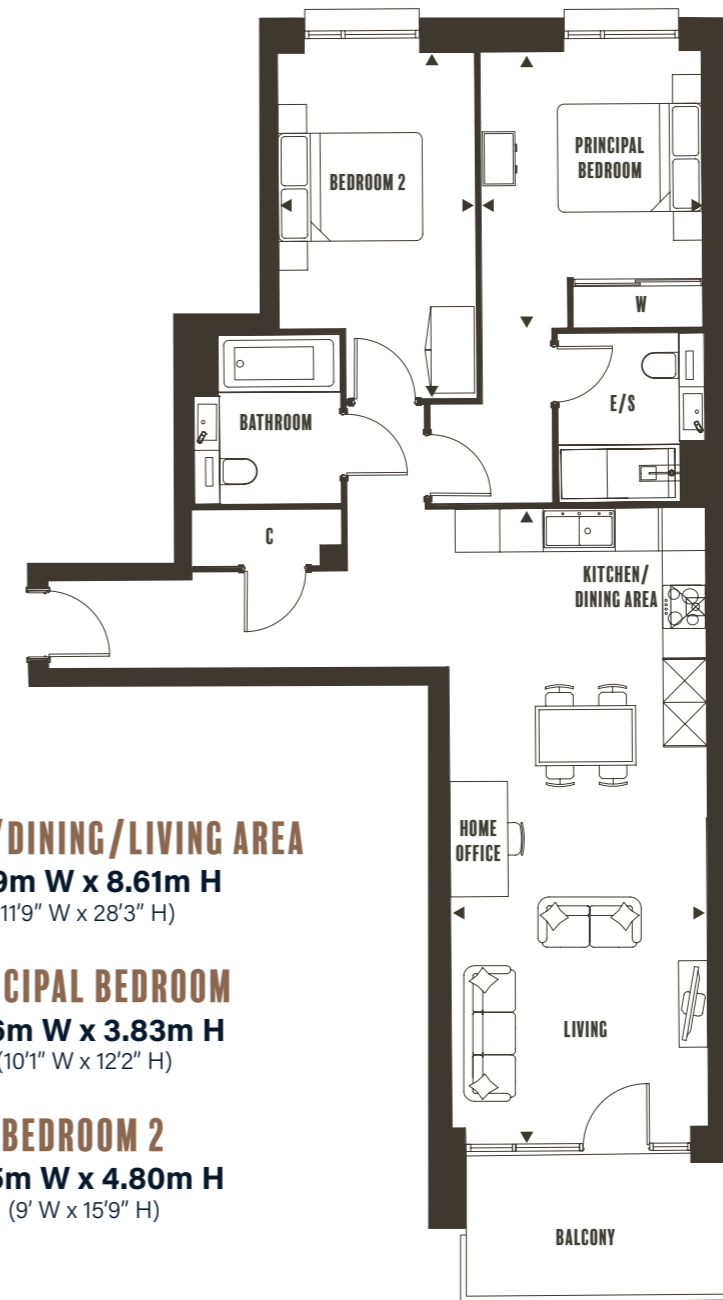
PRINCIPAL BEDROOM
4.88m W x 2.59m H
(16' W x 8'6" H)

BEDROOM 2
3.14m W x 4.64m H
(10'3" W x 15'3" H)

Floor plans, dimensions and configurations are included for guidance only, may be subject to revision during construction, please refer to current drawings with a Sales Consultant. Internal areas quoted are not inclusive of Balcony and Terrace areas. C - Cupboard, W - Wardrobe, E/S - En-Suite. Dimensions taken from ▶

TYPE 19A 2 BEDROOM

Total Internal Area **83 m² (893 ft²)**
Plots 295, 305, 315, 325, 335, 345, 355, 365, 390, 397, 404, 411, 418, 425 & 432



KITCHEN/DINING/LIVING AREA
3.59m W x 8.61m H
(11'9" W x 28'3" H)

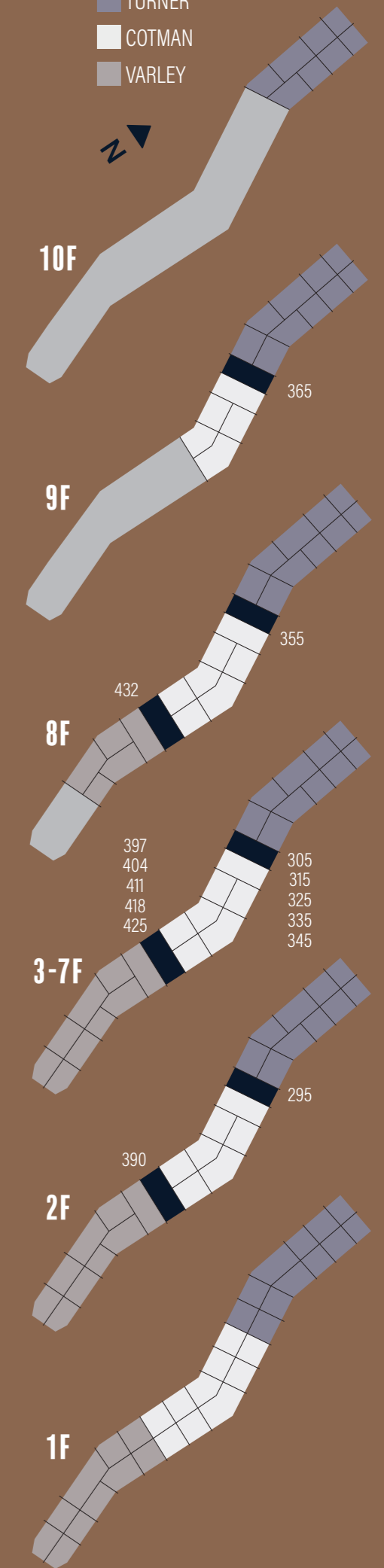
PRINCIPAL BEDROOM
3.06m W x 3.83m H
(10'1" W x 12'2" H)

BEDROOM 2
2.75m W x 4.80m H
(9' W x 15'9" H)

Plots 295 & 390 have a Terrace instead of a Balcony

Floor plans, dimensions and configurations are included for guidance only, may be subject to revision during construction, please refer to current drawings with a Sales Consultant. Internal areas quoted are not inclusive of Balcony and Terrace areas. C - Cupboard, W - Wardrobe, E/S - En-Suite. Dimensions taken from ▶

TURNER
COTMAN
VARLEY



TURNER
COTMAN
VARLEY



10F

9F

8F

3-7F

2F

1F

TYPE 19B 2 BEDROOM

Total Internal Area **83 m² (893 ft²)**

Plots 394, 401, 408, 415, 422, 429, 436, 440, 457, 465, 473, 481, 489, 497 & 501



KITCHEN/DINING/LIVING AREA

3.59m W x 8.61m H
(11'9" W x 28'3" H)

PRINCIPAL BEDROOM

3.06m W x 3.85m H
(10'1" W x 12'7" H)

BEDROOM 2

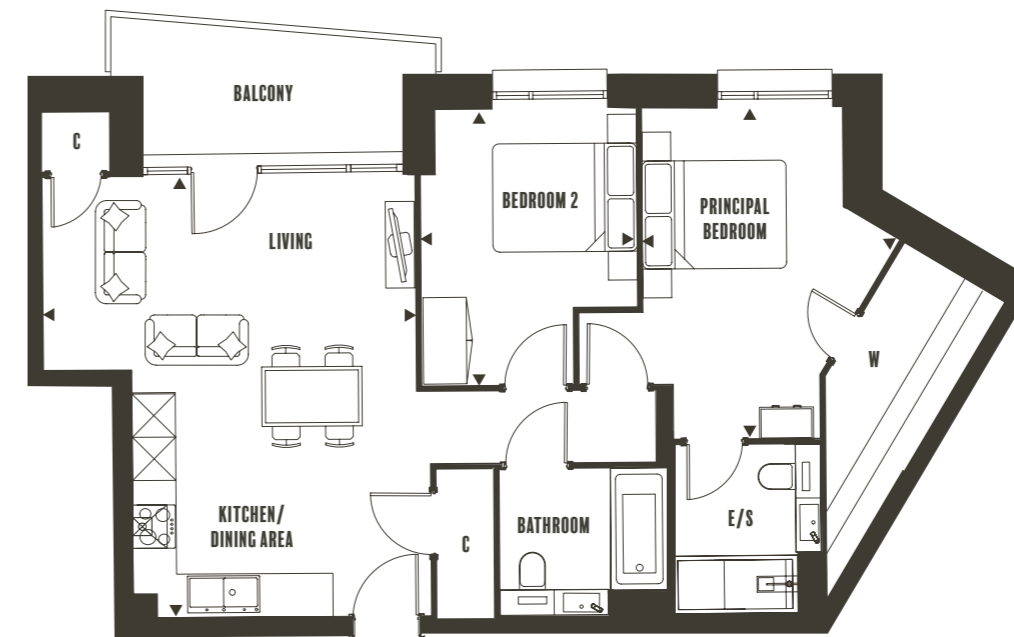
2.73m W x 4.80m H
(9' W x 15'9" H)

Floor plans, dimensions and configurations are included for guidance only, may be subject to revision during construction, please refer to current drawings with a Sales Consultant. Internal areas quoted are not inclusive of Balcony and Terrace areas. C -Cupboard, W - Wardrobe, E/S - En-Suite. Dimensions taken from ►

TYPE 20 2 BEDROOM

Total Internal Area **76 m² (818 ft²)**

Plots 395, 402, 409, 416, 423, 430, 437 & 441



KITCHEN/DINING/LIVING AREA

5.18m W x 6.16m H
(17' W x 20'2" H)

PRINCIPAL BEDROOM

3.54m W x 4.59m H
(11'8" W x 15'1" H)

BEDROOM 2

3.01m W x 3.85m H
(9'11" W x 12'8" H)

Plot 395 has a Terrace instead of a Balcony

Floor plans, dimensions and configurations are included for guidance only, may be subject to revision during construction, please refer to current drawings with a Sales Consultant. Internal areas quoted are not inclusive of Balcony and Terrace areas. C -Cupboard, W - Wardrobe, E/S - En-Suite. Dimensions taken from ►

TURNER
COTMAN
VARLEY



10F

9F

8F

3-7F

2F

1F

TURNER
COTMAN
VARLEY



10F

9F

8F

3-7F

2F

1F

431

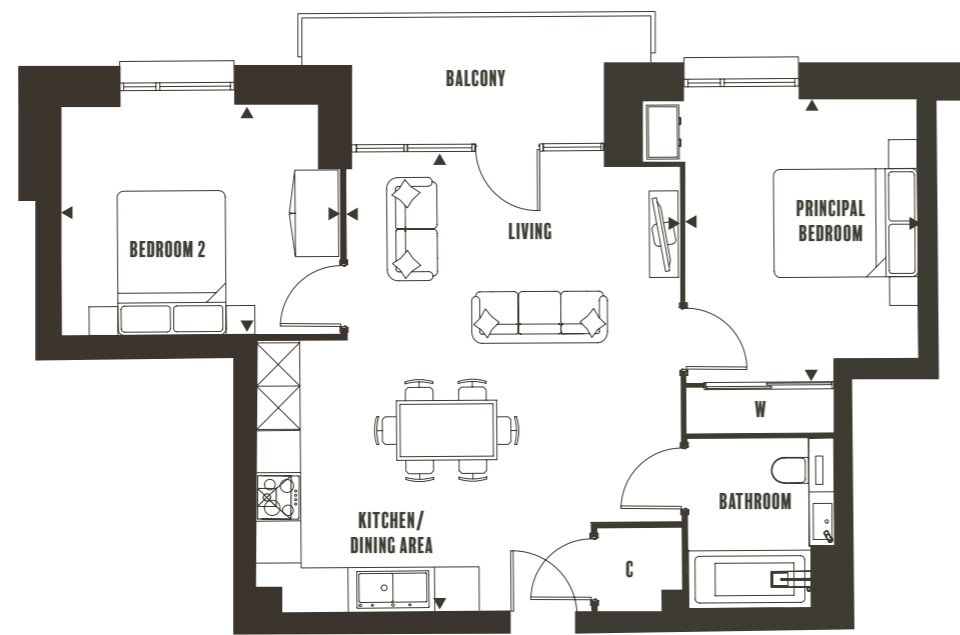
396
403
410
417
424

389

TYPE 22 2 BEDROOM

Total Internal Area **66 m² (710 ft²)**

Plots 389, 396, 403, 410, 417, 424 & 431



KITCHEN/DINING/LIVING AREA

4.63m W x 6.38m H
(18'2" W x 20'11" H)

PRINCIPAL BEDROOM

3.22m W x 3.89m H
(10'7" W x 12'9" H)

BEDROOM 2

3.91m W x 3.23m H
(12'10" W x 10'7" H)

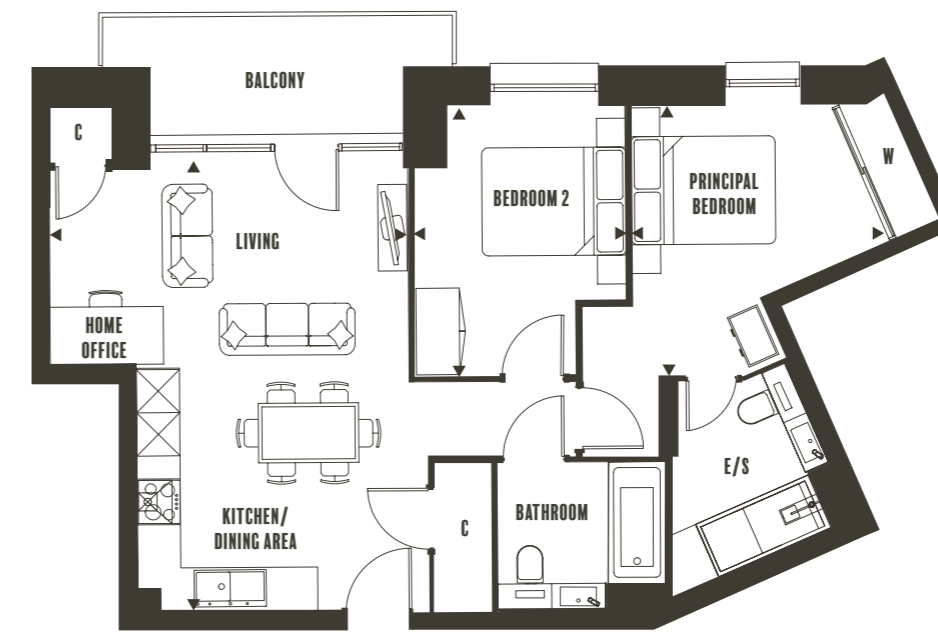
Plot 389 has a Terrace instead of a Balcony

Floor plans, dimensions and configurations are included for guidance only, may be subject to revision during construction, please refer to current drawings with a Sales Consultant. Internal areas quoted are not inclusive of Balcony and Terrace areas. C - Cupboard, W - Wardrobe, E/S - En-Suite. Dimensions taken from ►

TYPE 23 2 BEDROOM

Total Internal Area **68 m² (737 ft²)**

Plots 458, 466, 474, 482, 490, 498 & 502



KITCHEN/DINING/LIVING AREA

4.99m W x 6.16m H
(16'4" W x 20'2" H)

PRINCIPAL BEDROOM

3.60m W x 3.82m H
(11'10" W x 12'6" H)

BEDROOM 2

2.95m W x 3.82m H
(9'8" W x 12'6" H)

Plot 458 has a Terrace instead of a Balcony

Floor plans, dimensions and configurations are included for guidance only, may be subject to revision during construction, please refer to current drawings with a Sales Consultant. Internal areas quoted are not inclusive of Balcony and Terrace areas. C - Cupboard, W - Wardrobe, E/S - En-Suite. Dimensions taken from ►

TURNER
COTMAN
VARLEY



10F

9F

8F

3-7F

2F

1F

502

466
474
482
490
498

458

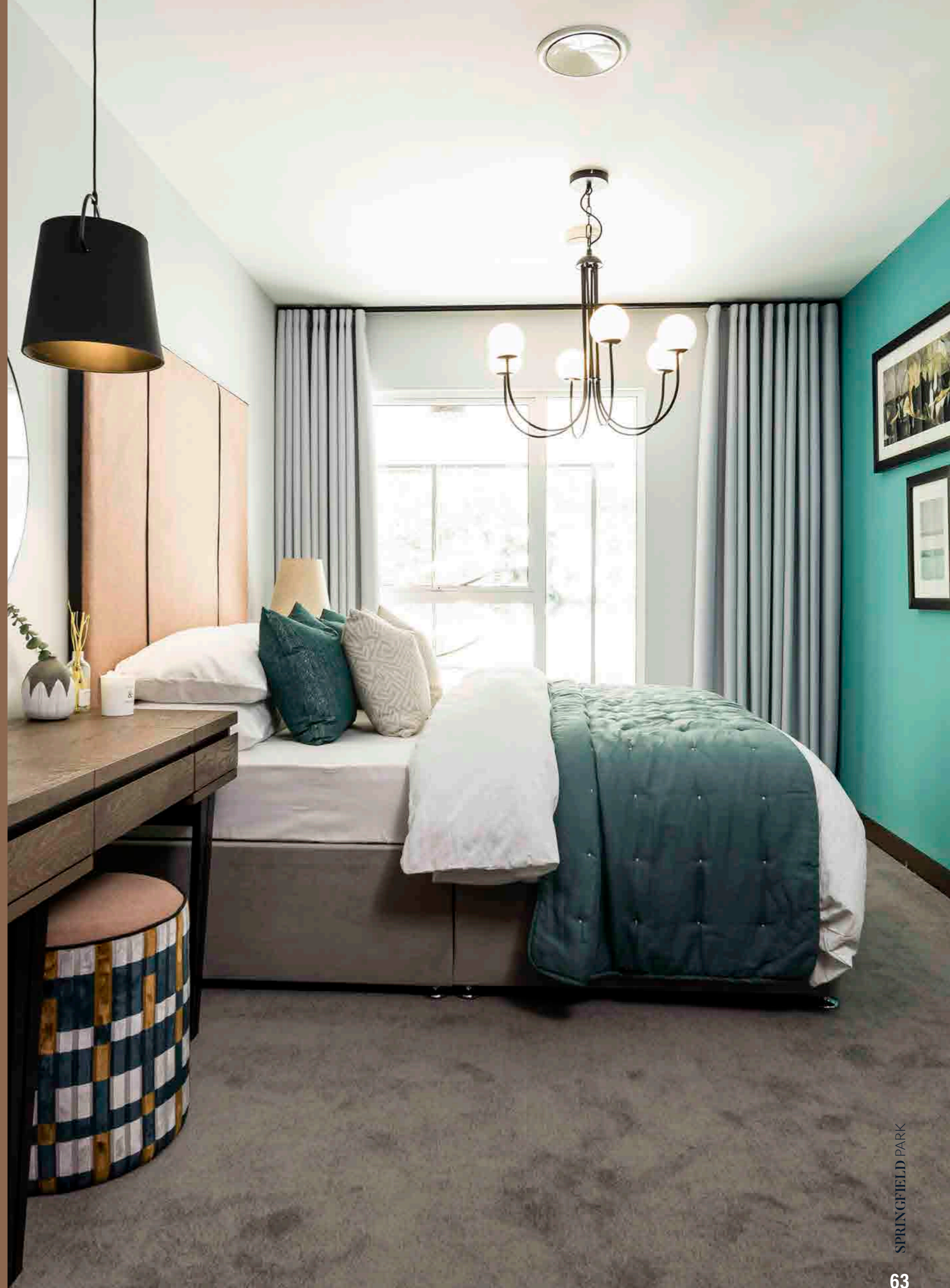
A HOME WHERE YOU CAN LIVE, WORK, LEARN AND GROW

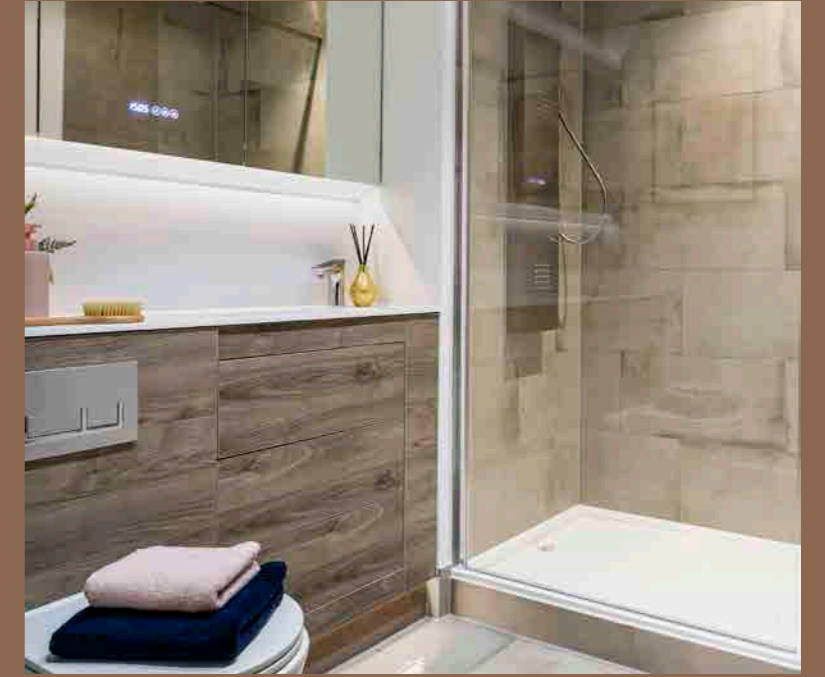
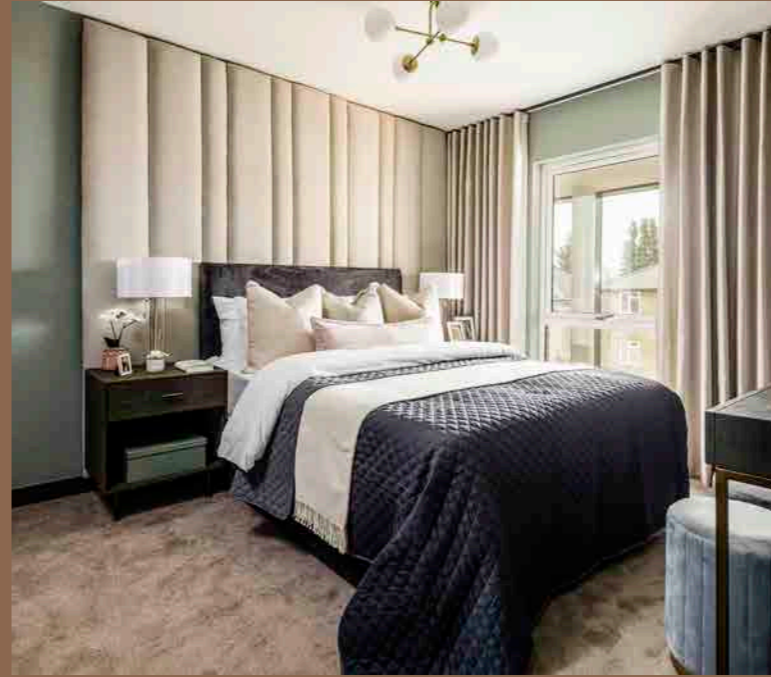
Maidstone and the surrounding area provide a broad array of employment opportunities, and Springfield Park's ideal location allows its residents to reach central London by train in just under an hour.

As part of the North Kent Enterprise Zone, a site comprised of five business sites that strive to offer investment opportunities, the Maidstone Innovation Centre is expected to support over 270 jobs with its focus on start-up and developing businesses.

The Kent Medical Campus, set to be completed in 2021, will provide up to 4,000 employment opportunities and the Ebbsfleet Garden City to create 30,000 jobs by 2035. The Innovation Park Medway master plan aims to strengthen the performance of the local economy and supply jobs.

Maidstone offers a good selection of schools and colleges with a handful of universities nearby, offering students of all ages plenty of choice for the best education.







Weston Homes

BUILT WITH PASSION, DELIVERED WITH PRIDE

Weston Homes was formed in 1987 by Bob Weston, establishing what has now become one of the major property developers in the South East of England.

Weston Homes has established a reputation for high-quality design and build standards, delivered with a passionate desire to make a genuine difference to the lives of our customers and to leave a legacy of which we are justly proud.

Continually re-assessing the marketplace, Weston Homes has combined the traditional skills of house-building with the ever-expanding opportunities created by new technology.

The company has taken a revolutionary approach to property development - many of our properties' components are now pre-manufactured and tested in our own carefully controlled Weston-run factory, rather than on site. This enables the efficient fitting at a late stage of construction of fixtures such as kitchen worktops, wardrobes and bathroom vanity units which incorporate bespoke basins, storage cabinets and associated plumbing. This minimises wasted materials whilst maximising the quality of your brand-new home.

SPRINGFIELD PARK

MAIDSTONE | KENT

Springfield Park, Royal Engineers Roads, Maidstone, Kent ME14 2LP

E: sales@weston-homes.com T: 01622 826140

www.weston-homes.com

The Weston Group Business Centre, Parsonage Road, Takeley, Essex, CM22 6PU

E: sales@weston-homes.com T: 01279 873300

www.weston-homes.com

Please Note:

(i) The particulars are set out as a general outline only for the guidance of intending purchasers or lessees and do not constitute, nor constitute part of, an offer or contract. (ii) All descriptions, dimensions, references to condition and necessary permissions for use and occupation, and other details are given without responsibilities and any intending purchasers or tenants should not rely on them as statements or representations of fact but must satisfy themselves by inspection or otherwise as to the correctness of each of them.

The information contained in this brochure is for guidance only. Weston Homes Plc operates a policy of continuous product development and features may therefore vary from time to time. Floorplans and dimensions can only be given as a guide and are indicative of the type only. The computer generated images, floorplans, configuration and layouts are included for guidance only, please refer to drawings in sales suite. It should be noted that the representations of Springfield Park may not necessarily be accurate in every respect.

These particulars should not be relied on as accurately describing any of the specific matters described by any order under the Consumer Protection from Unfair Trading Regulations (2008). This information does not constitute a contract of warranty. All details correct at time of going to press. Springfield Park is the marketing name for use until a permanent postal address has been issued.

Sources for travel times: Google Maps, National Rail Enquiries and Trainline.

Designed and produced by Trident Marketing Anglia Ltd. tridentmarketinguk.com

PLOT TO PAGE INDEX



■ TURNER ■ COTMAN ■ VARLEY

PLOT	PAGE	PLOT	PAGE	PLOT	PAGE	PLOT	PAGE
283	33	308	53	333	32	357	41
284	35	309	39	334	42	358	53
285	34	310	24	335	57	359	39
286	29	311	25	336	55	360	24
287	46	312	40	337	41	361	25
288	28	313	32	338	53	362	40
289	26	314	42	339	39	363	32
290	24	315	57	340	24	364	42
291	25	316	55	341	25	365	57
292	27	317	41	342	40	366	55
293	32	318	53	343	32	367	41
294	42	319	39	344	42	368	53
295	57	320	24	345	57	369	39
296	55	321	25	346	55	370	24
297	41	322	40	347	41	371	25
298	53	323	32	348	53	372	40
299	39	324	42	349	39	373	32
300	24	325	57	350	24	374	41
301	25	326	55	351	25	375	53
302	40	327	41	352	40	376	39
303	32	328	53	353	32	377	24
304	42	329	39	354	42	378	25
305	57	330	24	355	57	379	40
306	55	331	25	356	55	380	32
307	41	332	40				

PLOT	PAGE	PLOT	PAGE	PLOT	PAGE	PLOT	PAGE
381	48	397	57	412	53	427	43
382	35	398	53	413	43	428	51
383	34	399	43	414	51	429	58
384	31	400	51	415	58	430	59
385	30	401	58	416	59	431	60
386	36	402	59	417	60	432	57
387	37	403	60	418	57	433	53
388	47	404	57	419	53	434	43
389	60	405	53	420	43	435	51
390	57	406	43	421	51	436	58
391	53	407	51	422	58	437	59
392	43	408	58	423	59	438	43
393	51	409	59	424	60	439	51
394	58	410	60	425	57	440	58
395	59	411	57	426	53	441	59
396	60						

PLOT	PAGE	PLOT	PAGE	PLOT	PAGE	PLOT	PAGE
442	52	458	61	473	58	488	51
443	56	459	52	474	61	489	58
444	56	460	56	475	52	490	61
445	54	461	56	476	56	491	52
446	50	462	54	477	56	492	56
447	38	463	50	478	54	493	56
448	36	464	51	479	50	494	54
449	37	465	58	480	51	495	50
450	49	466	61	481	58	496	51
451	52	467	52	482	61	497	58
452	56	468	56	483	52	498	61
453	56	469	56	484	56	499	50
454	54	470	54	485	56	500	51
455	50	471	50	486	54	501	58
456	51	472	51	487	50	502	61
457	58						

■ 1 BED ■ 2 BED

SPRINGFIELD PARK

MAIDSTONE | KENT

WWW.WESTON-HOMES.COM

01622 826140

