



Lismore Place  
Airdrie  
ML6 8FZ

2   
1   
2 



## Offers Over £115,000

Property Bureau are delighted to bring to the market this attractive two bedroom mid terraced house. Set within a peaceful cul-de-sac of a modern development of similar property types



Home Report Valuation  
£120,000

Council Tax Band

EPC Rating C

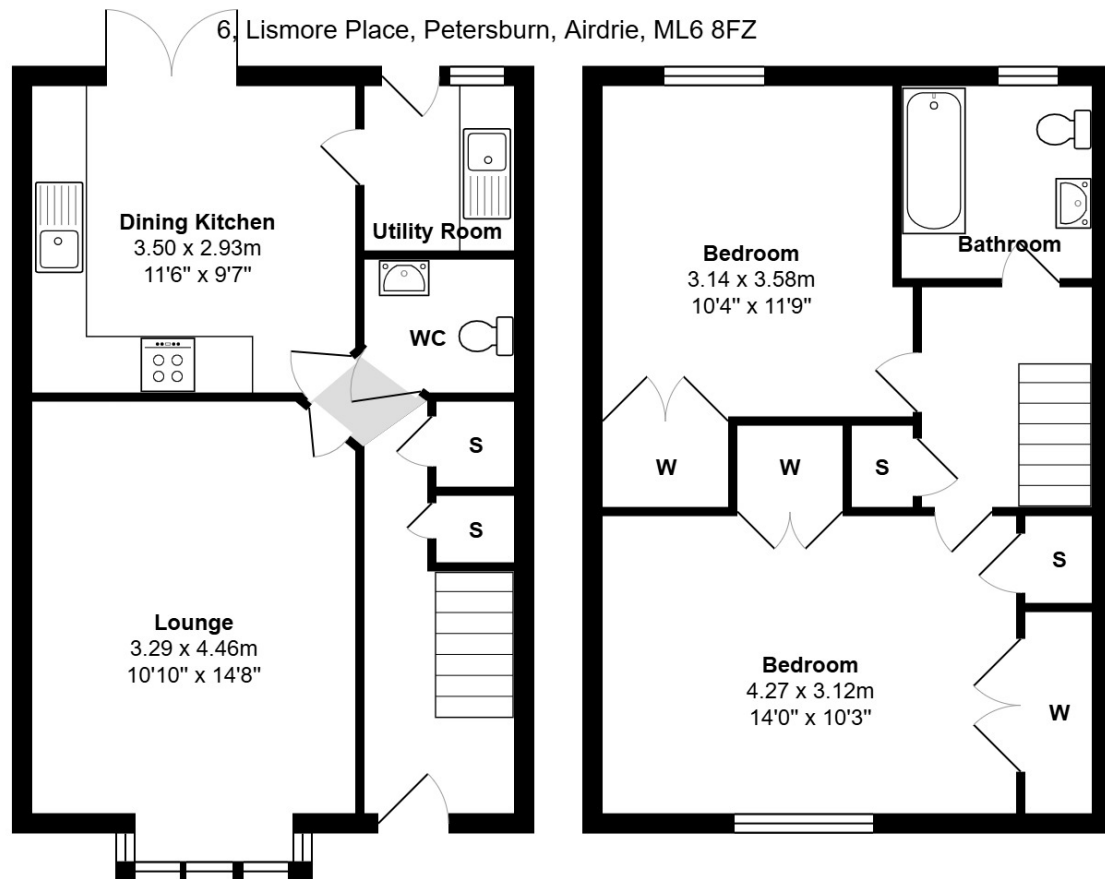


The generous room sizes make this an ideal purchase for First Time Buyers, Couples and small families.



Vendor Comments





All measurements are approximate and for display purposes only

## Location

Airdrie has a good selection of shops, including Gartlea Retail Park, and schools at both primary and secondary level. The town offers quick and easy access to all the major motorway networks for commuting throughout the central belt as well as a handy Railway Station.







[www.propertybureau.co.uk](http://www.propertybureau.co.uk)

Glasgow   Stirling   Helensburgh   **Lanarkshire**

**13 Broomknoll Street, Lanarkshire, ML6 6BN**

**[enquiries@propertybureau.co.uk](mailto:enquiries@propertybureau.co.uk)**  
**01236 758111**

Whilst this brochure has been prepared with care, it is not a report on the condition of the property. Its terms are not warranted and do not constitute an offer to sell. All area and room measurements are approximate only. Floorplans may not be to scale.

