



Crathie Drive
Airdrie
ML6 0ND

2 
2 
1 

Offers Over £157,500

A spacious semi-detached bungalow situated on a generous plot within an established and well regarded residential development.

Offering one level living with the additional benefit of attractive gardens, double garage and large driveway.



Home Report Valuation
£160,000



The generous accommodation will appeal to a wide variety of purchasers but perhaps ideal for those looking for a peaceful setting to enjoy retirement.

Internally the property consists of entrance vestibule with storage, well-proportioned lounge with feature fireplace, bright kitchen with an array of base and wall units, rear facing conservatory, stylish recently fitted wet room and two bedrooms which both benefit from fitted storage.

All rooms are presented in bright fresh decor. Warmth is provided by gas fired central heating and double glazing has been installed.

White goods and conservatory furniture are available by separate negotiation.



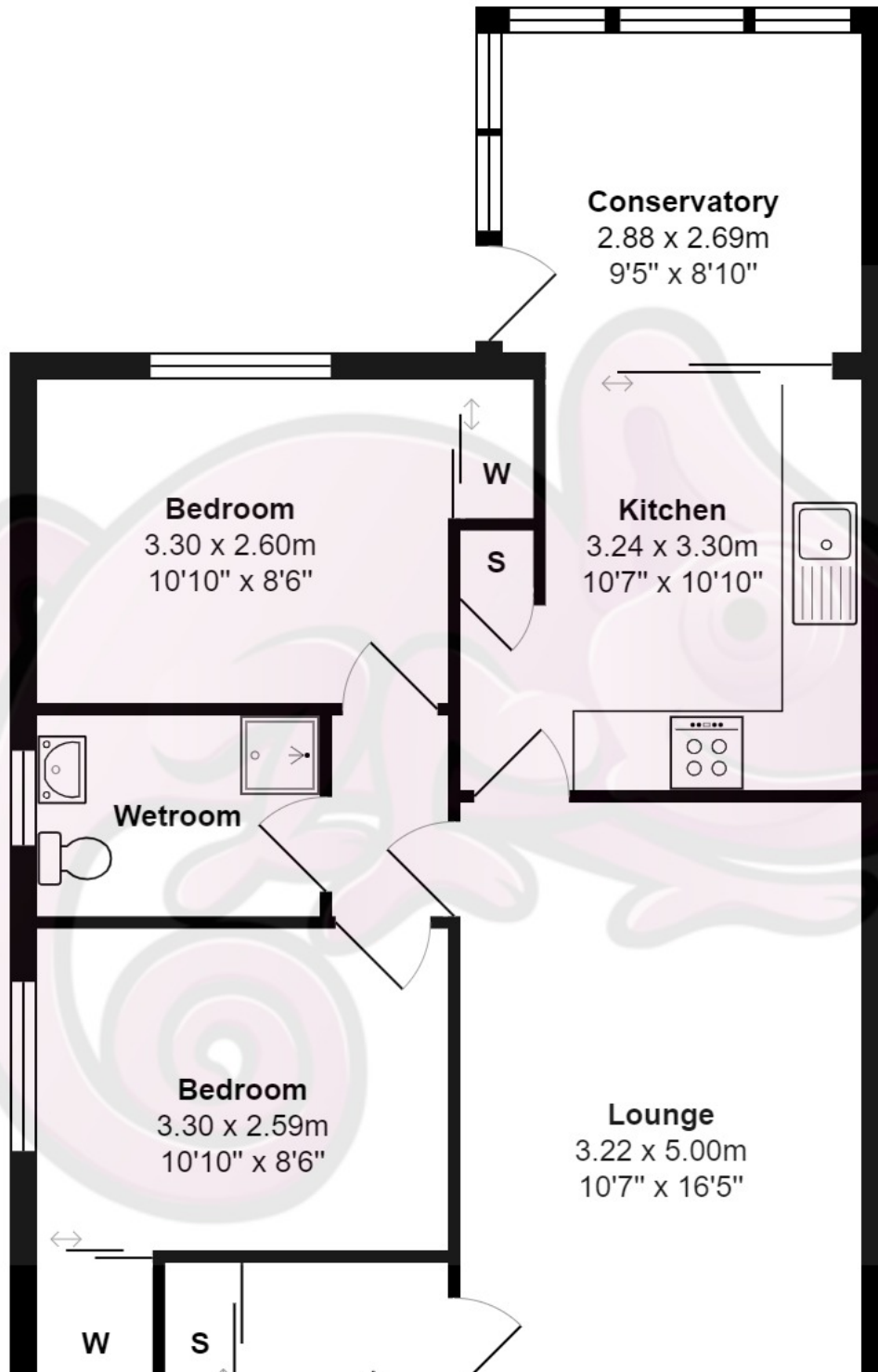
To the front of the home are generous gardens mainly laid to lawn. An extensive driveway to the side provides off-street parking for numerous family sized cars and in turn allows access to the double detached garage. To the rear of the property are attractive gardens which have patio and lawn sections. The terraced gardens are fully enclosed by substantial timber fencing.



Vendor Comments

The lovely house and caring neighbours will be warmly remembered.

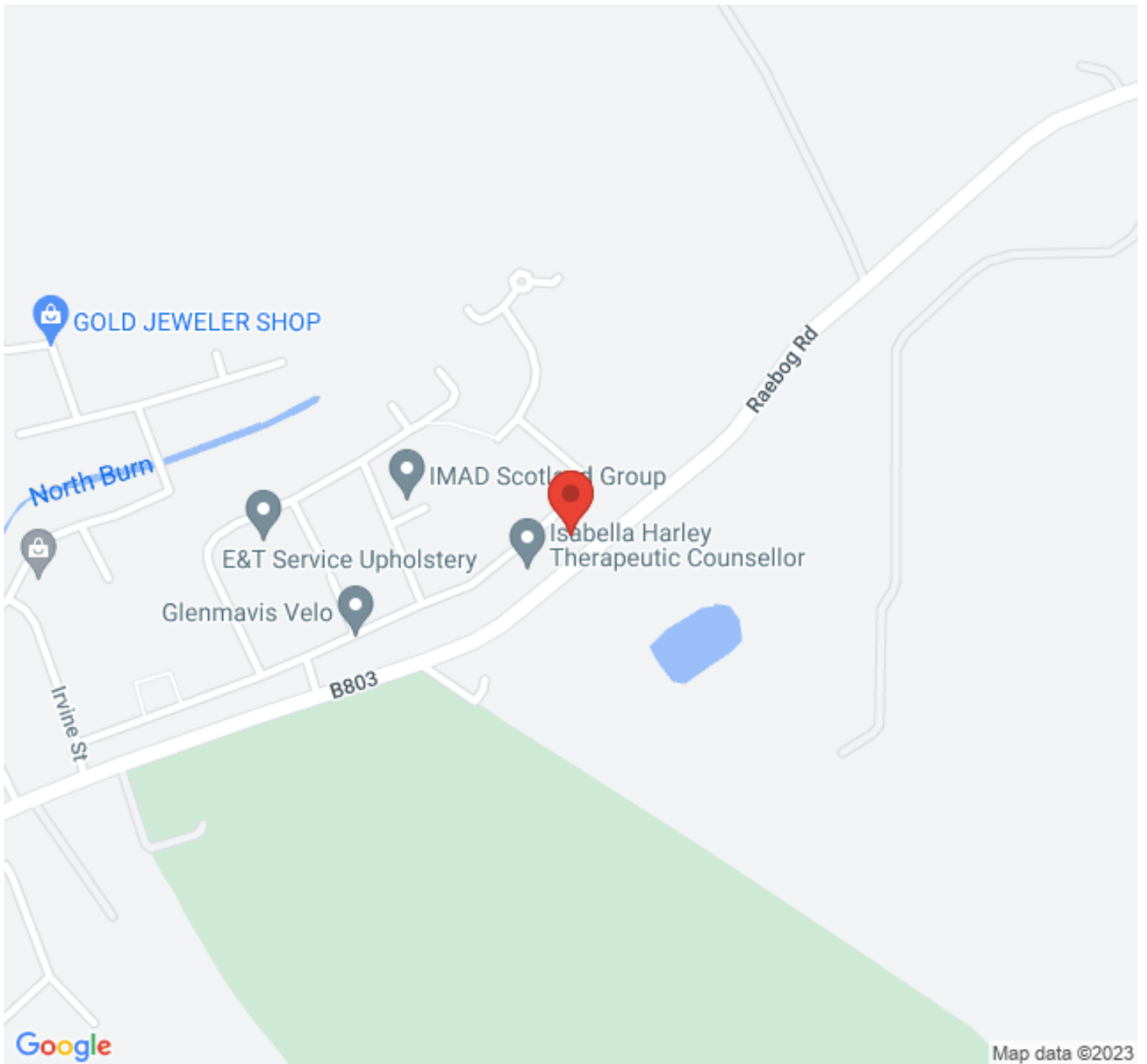
66, Crathie Drive, Glenmavis, ML6 0ND



Location

Crathie Drive is located near all local amenities including a good range of shops. Schooling at Primary and Secondary levels are located close by. There is also easy access for commuting throughout the central belt and Airdrie Train Station provides access to Glasgow and Edinburgh City Centre.





www.propertybureau.co.uk

Glasgow Stirling Helensburgh **Lanarkshire**

13 Broomknoll Street, Lanarkshire, ML6 6BN

**enquiries@propertybureau.co.uk
01236 758111**

Whilst this brochure has been prepared with care, it is not a report on the condition of the property. Its terms are not warranted and do not constitute an offer to sell. All area and room measurements are approximate only. Floorplans may not be to scale.

