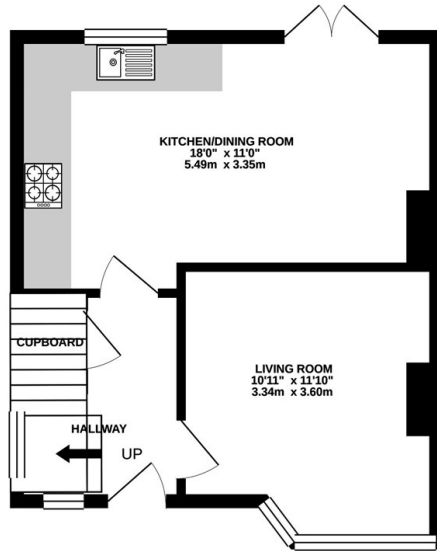


## 23 Victoria Avenue, Camberley, Surrey, GU15 3HP

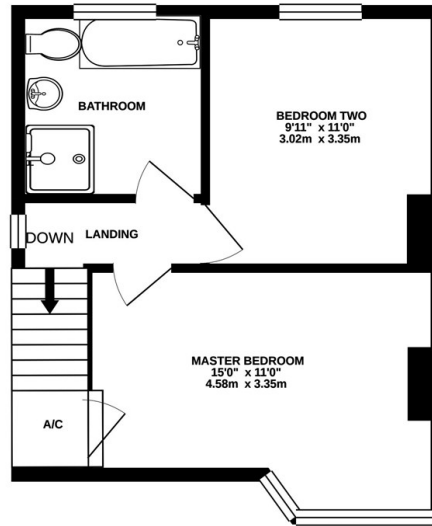
£1,500 PCM

- Open Plan Kitchen/Diner
- Gas Central Heating
- Available Mid May
- Fantastic Sized Garden
- Upstairs Bathroom
- NO SHARERS
- Two Double Bedrooms
- New Carpets
- Double Glazing

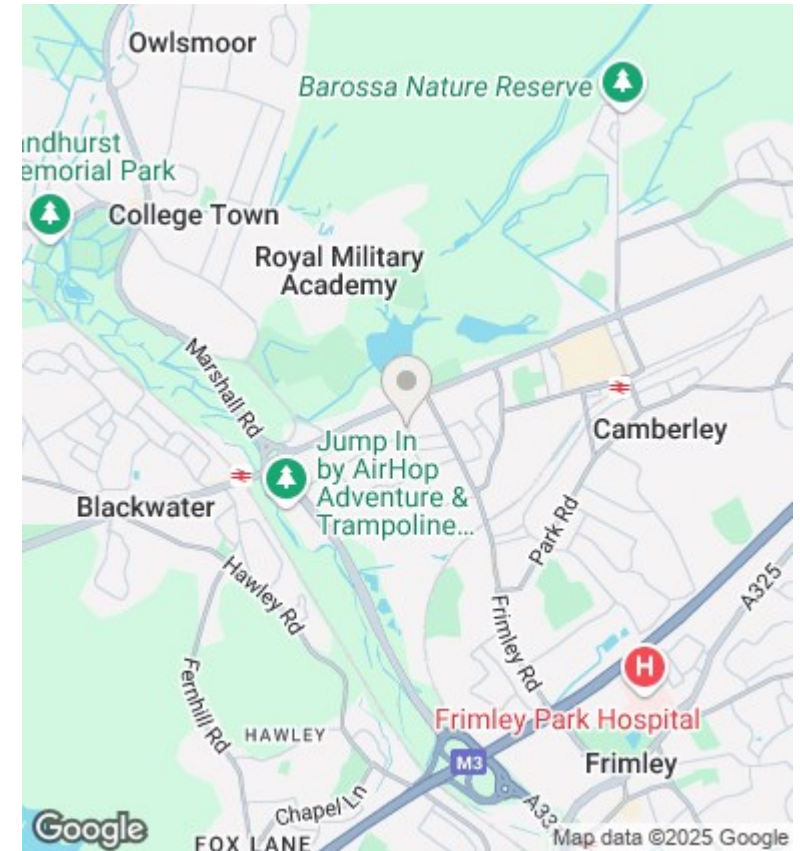
GROUND FLOOR  
364 sq.ft. (33.9 sq.m.) approx.



1ST FLOOR  
364 sq.ft. (33.8 sq.m.) approx.



TOTAL FLOOR AREA: 728 sq.ft. (67.6 sq.m.) approx.  
Whilst every attempt has been made to ensure the accuracy of the floorplan contained here, measurements of doors, windows, rooms and any other items are approximate and no responsibility is taken for any error, omission or mis-statement. This plan is for illustrative purposes only and should be used as such by any prospective purchaser. The services, systems and appliances shown have not been tested and no guarantee as to their operability or efficiency can be given.  
Made with Metropix ©2020



## Directions

## Viewings

Viewings by arrangement only. Call 01483 276565 to make an appointment.

## Council Tax Band

C

## EPC Rating:

D

Energy Efficiency Rating		
	Current	Potential
Very energy efficient - lower running costs		
(92 plus) <b>A</b>		<b>86</b>
(81-91) <b>B</b>		
(69-80) <b>C</b>		
(55-68) <b>D</b>	<b>65</b>	
(39-54) <b>E</b>		
(21-38) <b>F</b>		
(1-20) <b>G</b>		
Not energy efficient - higher running costs		
England & Wales		EU Directive 2002/91/EC